

SENTECH KOREA 2010 ALCOHOL ANALYZER ALCOSCAN

The innovative technology of *Sentech Korea* opens up a happier future.

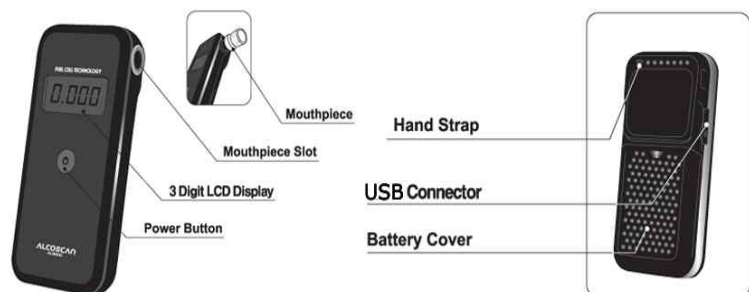
Fuel Cell Technology
ALCOSCAN
AL9000

The **Fuel Cell Sensor Technology**, AL9000 is intended to measure alcohol in human breath. The accuracy of this device has been established at a Blood Alcohol Concentration of 0.000 to 0.400%BAC or 0.000 to 4.000‰



SPECIFICATIONS

1. Indication of B.A.C.: 0.000 to 4.000 ‰ or 0.000 to 0.400%BAC or 0.000 to 2.000 mg/l BrAC by LCD display
2. Sensor: Fuel cell type alcohol sensor
3. Accuracy: $\pm 0.005\%$ BAC at 0.100%BAC
4. Mouthpiece: use
5. Power: Two 1.5V "AAA" size alkaline batteries
6. Weights: 100g (Including Batteries)
7. Dimension: 116 (height) X 50 (width) X 20 (thickness) mm
8. Audible warnings: 3 steps beep warning of alcohol detection with LED display
9. Available color: Black
10. Certificate: CE



Contents

- 1x Breathalyzer
- 1x Plastic case
- 5x Mouthpiece
- 2x AAA size Alkaline Batteries
- 1x Manual
- 1x Hand strap
- 1x Pouch

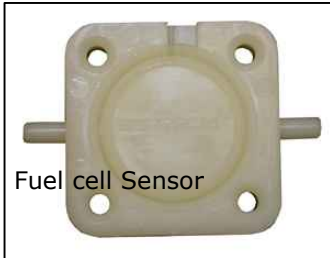
PACKAGE

25pcs/Carton

Size: 600 x 480 x 300(mm) / Weight: 18kg

SENTECH KOREA 2010 ALCOHOL ANALYZER ALCOSCAN

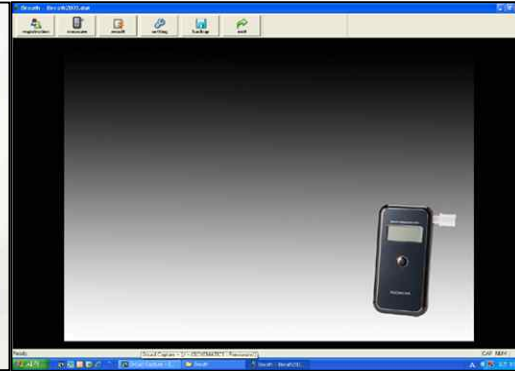
The innovative technology of Sentech Korea opens up a happier future.



M.O.Q. 50pcs per order

*Over 1Kpcs order's case, we will provide buyer designed gift box and logo imprinted without extra charge.

PC software CD & USB cable *additional charge \$20.00



Please contact

Zip code: 413-832

63-23 Sinchon-Ri, Gyoha-Eup, Paju-Si, Kyunggi-Do, Korea

TEL: 82-31-8071-4400

FAX: 82-31-8071-4411

URL: www.sentechkorea.com

E-mail: shkim@sentechkorea.com

