

CORIO CD-1000F Refrigerated / heating circulator

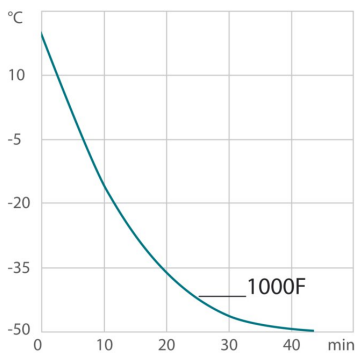
Refrigerated / heating circulators of the CORIO CD series distinguish themselves with a great price-to-performance ratio. Durable and dependable, they are suitable for a wide range of standard and routine work in both laboratories and industrial environments.



Product features

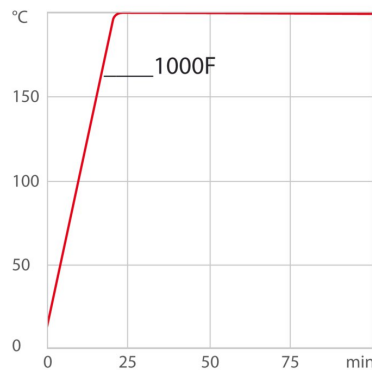
- Models for internal and external applications
- Bright, white, easy to read display
- Very quiet
- USB connection
- Integrated pump connection M16×1
- easy switching between internal and external circulation
- Bath lid and drain tap included
- Removable ventilation grid
- Refrigeration unit without side vents
- Class III (FL) according to DIN 12876-1
- Space-saving cooling coil design provides more usable space in the bath tank

Cool-down time



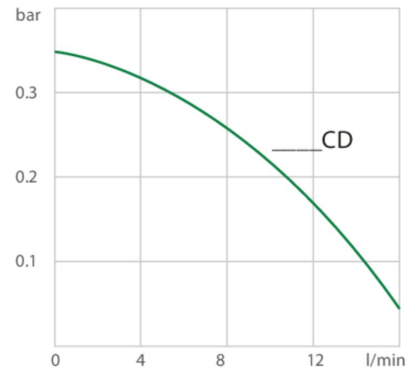
Medium: Ethanol

Heat-up time



Medium: Thermal

Pump capacity



Medium: Water

Performance values

230V/50Hz (Schuko Plug - CEE 7/4 Plug Type F)

Heating capacity kW	2
Viscosity max. cSt	50
Pump capacity flow rate l/min	15
Pump capacity flow pressure psi	5.1
Power consumption A	14

Order No.	9012707.03						
Cooling capacity (Ethanol)							
°C	20	10	0	-10	-20	-30	-40
kW ¹	1	1	0.98	0.75	0.53	0.27	0.13
Refrigerant stage 1							
Refrigerant	R449A						
Filling weight g	190						
Global Warming Potential for R449A	1397						
Carbon dioxide equivalent t	0.26543						

¹ Performance specifications measured in accordance with DIN 12876. Cooling capacities up to 20 °C measured with ethanol; over 20 °C with thermal oil unless otherwise specified. Performance specifications apply at an ambient temperature of 20 °C. Performance values may differ with other bath fluids.

Technical data

Available voltage versions		Cooling	
Order No.	9 012 707	Cooling of compressor	1-stage Air
Available voltage versions:			
9012707.13	230V/60Hz (Nema N6-20 Plug) (R449A)		
9012707.03.chn	230V/50Hz (CN Plug) (R449A)		
9012707.04	230V/50Hz (UK Plug Type BS1363A) (R449A)		
9012707.05	230V/50Hz (CH Plug Type SEV 1011) (R449A)		
9012707.02	115V/60Hz (Nema N5-20 Plug) (R449A)		
9012707.03	230V/50Hz (Schuko Plug - CEE 7/4 Plug Type F) (R449A)		
9012707.12	200V/50-60Hz (Nema N6-20 Plug) (R449A)		
Bath		Other	
Bath tank	Stainless steel	Classification	Classification III (FL)
Bath cover	integrated	IP Code	IP 21
Usable bath opening in. (W x L / D)	7.1 x 5.1 / 5.9	Pump function	Pressure Pump
		Pump type	Immersion Pump
Electronics		Dimensions and volumes	
Interfaces	USB	Weight lbs	113.5
Temperature control	PID1	Barbed fittings inner diameter mm	8/12 mm
Absolute temperature calibration	1 Point Calibration	Dimensions in. (W x L x H)	16.5 x 19.3 x 29.1
Temperature display	LED	Filling volume l	5 ... 7.5
Temperature setting	Keypad	Pump connections	M16x1 male
Temperature values		Included in delivery	
Setting the resolution of the temperature display °C	0.1	2 Barbed fittings for tubing 8 and 12 mm ID. (Pump connections M16x1 male)	
Working temperature range °C	-40 ... +150		
Temperature stability °C	±0.03		

Ambient temperature °C	+5 ... +40
Setting the resolution of the temperature display °C	0.01 ... 0.1

All Benefits



Brilliant.
Very bright display makes it easy to read even from a distance.



Switch on. And off you go.
Intelligent operating concept. Ready for operation with just a few quick and easy steps.



Timer. Integrated.
CORIO circulators include an integrated timer function. When the set time has elapsed, a signal sounds and the device switches off. Setting range: 0 ... 999 minutes.



Everything at the front.
All operating controls and safety functions are accessed easily and comfortably from the front.



Exact.
You can rely on it. PID1 control and 'Active Cooling Control' make the new CORIO precise and perfect.



Locked in.
The lockable power plug guarantees safe connection. More process safety.



Connection. Easy.
Inclined pump connections (M16×1) facilitate the connection of applications. Each unit includes 2 barbed fittings of 8/12 mm diameter each.



Early warning system for low liquid level
Maximum safety for applications, optical and audible alarm, allows user to refill bath fluid before the unit shuts down



Connectivity.
Remote control made easy. CORIO CD circulators feature a USB connection.



100% Checked.
100% testing. 100% quality. Each JULABO Circulator undergoes thorough quality testing before leaving the factory.



ATC.
Absolute Temperature Calibration, 1-point calibration (CD).



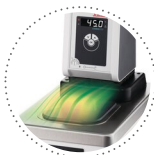
Handle with ease.
Makes day-to-day work easy. Comfortably move your CORIO around by using the ergonomic handles (front and rear).



Mobile.
Extra easy handling. Integrated castors for easy repositioning of refrigerated circulators.



Space saving. Free up space.
Place your JULABO Circulator right next to an application, another unit, or wall. That saves space. This is made possible by eliminating vents and connections on the sides.



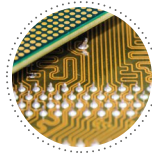
Condensation protection.
Superb design solution. Integrated ventilation directs air over the bath lid and minimizes condensation.



Green technology.
Development consistently applied environmentally friendly materials and technologies.



Internal. External.
The pump is controlled via a lever located directly below the display. Easily change between internal and external circulation.



Modern. Reliable.
High-grade components in every JULABO Circulator – platinum sensors, proven motor technology, CAN-Bus communication and much more.



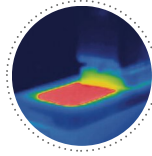
Safety.
CORIO CD and CP comply with Class III (FL) according to DIN 12876-1 and switches off automatically in case of high temperature or low liquid level alarm.



Satisfied customers.
11 subsidiaries and more than 100 partners worldwide guarantee fast and qualified JULABO support.



Services 24/7.
Around the clock availability. You can find suitable accessories, data sheets, manuals, case studies, and more at www.julabo.com.



Solid.
Minimized energy loss through high-quality insulation.



Stable.
Rubber feet allow for a secured footing of your CORIO to prevent damage to your laboratory equipment.



Tidy.
The special drain tap for easy draining of bath fluids without tools.



Touching permitted.
Optimum safety. The ergonomic plastic handle protects your fingers from hot surfaces.



JULABO. Quality.
Highest standards of quality for a long product life.



Quick start.
Individual JULABO consultation and comprehensive manuals at your disposal.



Quick support
If an error occurs, the integrated Black-Box function permits fast diagnosis by the JULABO service team