

Inverted Metallurgical Microscope LM2000



Functions & Features

- Infinity-corrected optical system. Large vision, high imaging quality & resolution
- 5pcs holes for Infinity LWD Plan Objectives : 5× ~ 100× (Dry)
- Wide field eyepiece 10x /φ22mm (Optional φ23mm)
- Observation tubes can be adjusted up and down 180 ° to accommodate with different users
- High quality Reflected Illumination system
- Light source 12V/50W halogen lamp (optional 5W LED), adjustable Light Intensity
- Adopt safe electrical system: low voltage DC input 12V5A
- Optional camera and computer software for observing, taking graphs, data management
- Available upgrading with various functions & accessories to adapt to more application

Application

- Application range: metal, mineral, ceramic, electronics, etc.
- Applicable occasions: factory testing, laboratory research, teaching experiment classroom, etc

Technical Parameters

Model	LM2000
Optical System	LIOS Optical System (Infinity-corrected)
Magnification range	50X ~ 1000X
Eyepiece	Widefield WF10×/ 22mm (Optional φ23mm)
Objectives	Infinity LWD Plan Objectives : 5×/10×/20×/50×/80×/100× (Dry)
Tubes	Trinocular tubes, Inclined 45°, adjustable distance: 50-75mm
Light distribution	100% for eyepiece observation 70% for eyepiece observation and 30% for camera
Observation mode	Bright-field, Simple polarizing (with polarizing units: Polarizer / Analyzer)
Nosepiece	Brightfield Holes: 5pcs
Focusing unit	Coarse and Fine coaxial handle Focus stroke: 12mm, Fine handle stroke per rotation: 200μm (min. scale: 2μm)
Mechanical Stage	Stage size: 210 mm×180mm, each X/Y stroke:50×50mm , Scale : 0.1mm
Illumination	Kohler Reflected Illumination Optical System (filters are available)
Light source	12V/50W halogen lamp / 5W LED lamp (optional) adjustable Light Intensity
Electrical system	Safe low voltage DC input: 12V5A Power Adapter Input voltage: 100V~240V
Output port	For CCD / CMOS Camera & Digital Still Camera of CANON / NIKON / OLYMPUS
Adaptor of Camera	1×/0.75×/0.5×C-Mount (focus adjustable)
Optional Camera & Software	CCD / CMOS industrial camera and PC software (Not an analysis system)
Net Weight & Dimension	Net Weight: 12Kg Dimension: 27.5*68*37.5cm

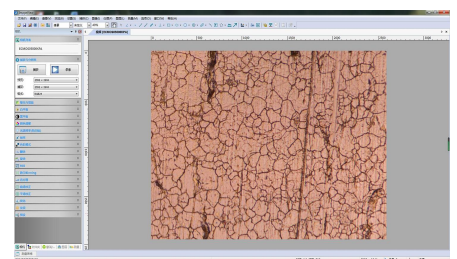
Pictures



Polarizing units Polarizer / Analyzer



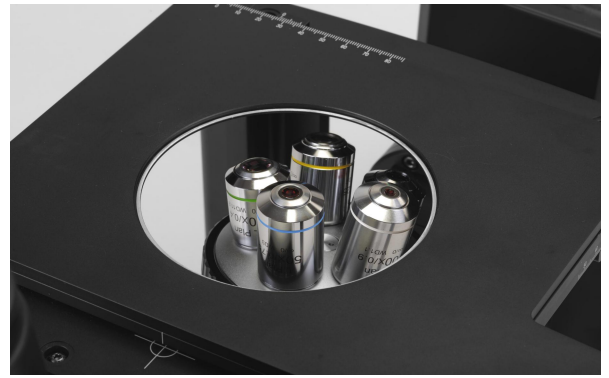
Trinocular for Camera & Software



CCD Software



180 ° adjustable Observation tubes



5pcs Brightfield Holes for Objectives

LM2000 Outfits

Item	Specification	Outfits
Eyepiece	WF10× / 22mm	●
	WF10× / 22mm (reticule 0.1mm)	○
Metallurgical Infinity LWD Plan Objectives	LPL 5× / 0.15 W.D=15.00mm	●
	LPL 10× / 0.25 W.D.= 10.70mm	●
	LPL 20× / 0.40 W.D.= 11.90mm	●
	LPL 50× / 0.75 W.D.= 3.00mm	●
	LPL 80× / 0.80 W.D.= 2.73mm	○
	LPL 100× / 0.90(Dry) W.D.= 1.10mm	○
Tubes	Inclined 45°, interpupillary distance: 50-75mm	●
Nosepiece	Brightfield Holes: 5pcs	●
Stage (mm)	Size: 210×180, X/Y stroke: 50×50 , Scale: 0.1	●
Focusing unit	Coarse and Fine coaxial handle	●
	Focus stroke: 12mm, Fine handle min.scale: 2μm	●
Illumination	Kohler Reflected Illumination Optical System	●
	12V/50W halogen lamp (adjustable Light Intensity)	●
Electrical system	Safe low voltage DC input of Main body: 12V 5A	●
	Power Adapter Input voltage: 100V~240V	●
Polarizing Unit	Polarizer and Analyzer	●
Filter	Blue	●
	Green/ Amber/ Grey	○
Camera Adaptor	1×/0.75×/0.5×C-Mount (focus adjustable)	○
Camera & Software	CCD / CMOS industrial camera and PC software	○



Infinity L Plan Objectives



0.75×/0.5×C-Mount



Filters