

This drawn-arc welding unit, the GYSPOT ARCPULL, is capable of welding all types of studs and stud supports up to Ø 13 mm (ceramic-shielded welding with or without gas shielding as well). Its secondary current regulation is well suited to the industrial sector to ensure that the arc remains perfectly stable. No more manual or approximate settings adjustments; the ARCPULL gun is the only one on the market that features linear motor technology.

DRAWN-ARC WELDING: THE PROFESSIONAL'S TECHNIQUE

Drawn-arc welding has many advantages over capacitor discharge:

- The process is reliable and can be easily repeated.
- Perfect welding with excellent penetration.
- Gas shielding prevents contamination.

DISRUPTIVE INNOVATION

Its gun is the only one on the market equipped with a linear motor. This cutting-edge product boasts unparalleled advantages:

- Full control of the welding cycle.
- Rate of 30 studs per minute.
- The welding process is controlled via a digital control unit, which does not need to be adjusted.
- Controlled by the welding machine's power source, it guarantees unrivalled arc-height accuracy.
- Fork with a ceramic support suitable for high-speed operations and for placing stud supports.
- Simple and fast.

TWO WELDING MODES

Its digital user-interface allows you to navigate between two welding modes in an intuitive and practical way:

- Synergic mode has predefined user settings for quick and efficient use.
- Expert mode offers complete control of the welding cycle.
- Its built-in memory can save up to 99 custom programs.



- Steel studs M12 (Type DD ISO13918)
- Aluminium studs M8 (Type PS ISO13918)
- Concrete anchor Ø13 (Type SD ISO13918)

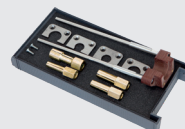
INCLUDED



Synergic Automatic Pistol



Double earth clamp
068605



Box of consumables for ARCPULL 700
068452

OPTIONS



Weld 910 XL
070967



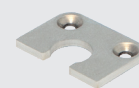
Fork with gas shielding
068346



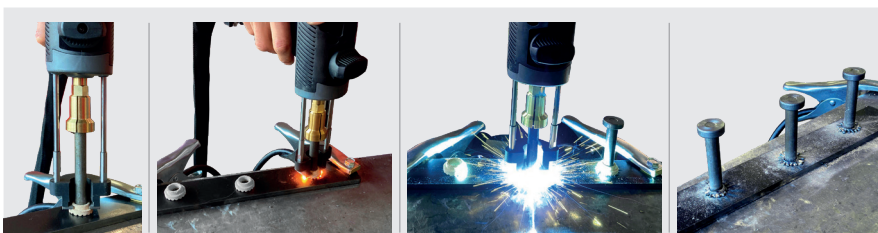
Concrete anchor holder Ø10
068438



Concrete anchor holder Ø13
075634



Ceramic support Ø13
075641



50/60hz	I ₂ MAX	INTEGRATED TECHNOLOGY		T		U ₂ V	A	kW		OK	OK	IP	cm	kg	
		SYNERGIC	SR	STAHL	ALU			400 V	480 V					ArcPull	ArcPull + gun
380 > 480 V	50>680 A	•	•	SYNERGIC DIGITAL GUN LINEAR MOTOR		22 > 44	20 A (D) 16 A (D)	47.8	45.7	OK	OK	IP23	32 x 32.4 x 41	17.4	20.4