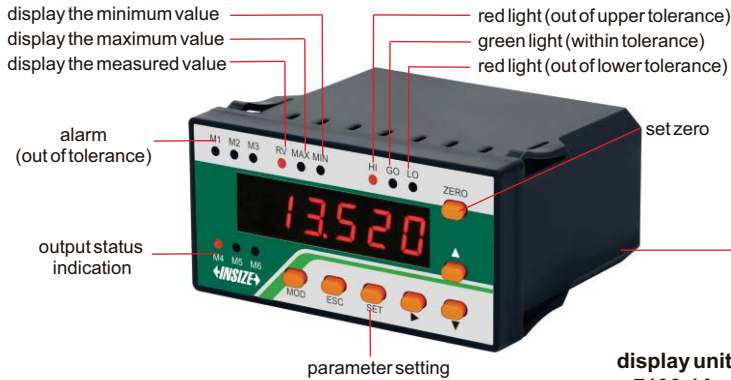
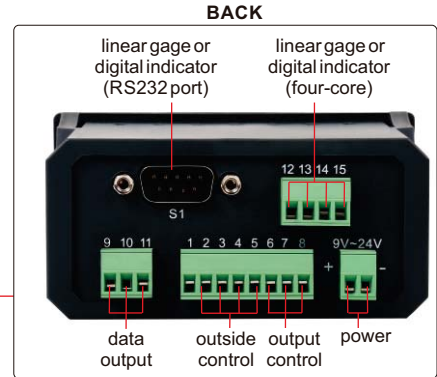


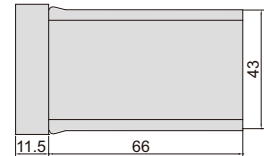
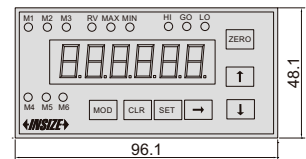
DISPLAY UNIT CODE 7106-1A



display unit
7106-1A



Unit: mm

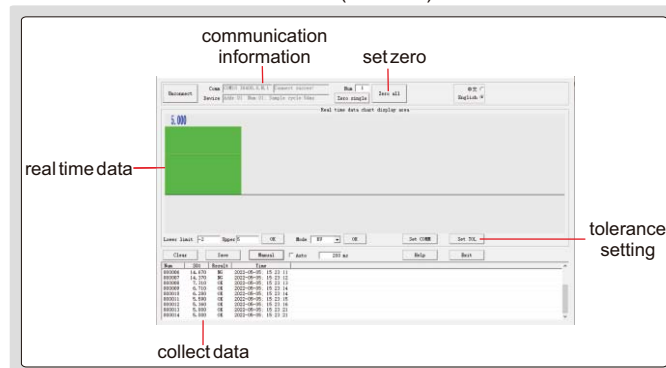


- Can be connected with 7107-11 or 7107-12 linear gage, can also be connected with digital indicator(data cable 7309-C01M is needed)
- Set tolerance and make judgment (out of upper tolerance, within tolerance, out of lower tolerance), output the judgment to control outside devices, control from outside (set zero, hold reading and collect data)
- Software of display unit(included): in the software, it is possible to set tolerance and show judgment (red when out of tolerance, green when within tolerance), set zero, collect data manually or automatically (time is adjustable), output data to Excel, print report

DISPLAY UNIT SPECIFICATION

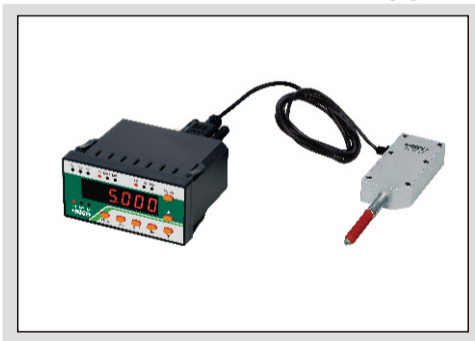
Code	7106-1A
Display	6 digits
Quantity of linear gage or digital indicator to be connected	1 pc
Tolerance	set tolerance and make judgment with alarm and lights (out of upper tolerance, within tolerance, out of lower tolerance)
Output control	output the tolerance judgment (out of upper tolerance, within tolerance, out of lower tolerance) to control outside devices
Outside control	control the display units from outside (set zero, hold reading and collect data)
Data output	connect to computer software and serial communication
Power supply	DC 9~24V

Software(included)



To be continued

Connected with **7107-11** or **7107-12** linear gage



Connected with digital indicator
(data cable **7309-C01M** is needed)



suitable for **2112, 2114, 2115, 2116, 2501,**
2103 and 2104 series digital indicators