

# HD side pressure tension tester

---



HD digital push-pull force gauge instruction manual

Thank you for purchasing the HF series digital push-pull force gauge:

The push-pull force gauge has the advantages of high precision, easy operation and convenient carrying. It also has various test modes, which is convenient for testers to use, and can store and input test data to the computer for statistical analysis. It can be combined with various test benches and jigs to form test machines for different purposes. The user can also input the gravity acceleration value of the use place to make the test more accurate.

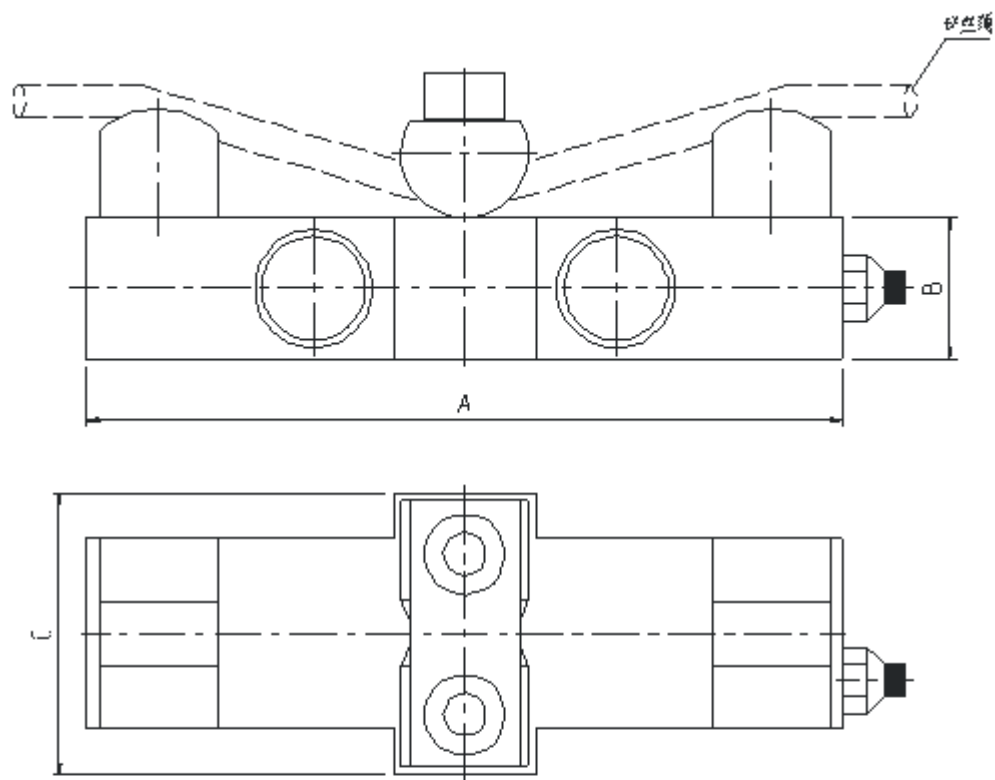
## 1. Features:

1. High precision and high resolution;
2. Five test modes and three display modes are available-to maximize the test efficiency;

3. N (Newton), kg (Kilogram), lb (Pound) three measurement units are available for selection and conversion;
4. Gravity acceleration setting function-the user can input the accurate value of the gravity acceleration of the use place by himself. Make testing and unit conversion more accurate;
5. Peak hold function. Keep peak display until manually cleared;
6. Automatic peak function, keep displaying the peak value and automatically release after 2 seconds;
7. The upper and lower limits and comparison values can be set for statistical analysis. Buzzer alarm when the comparison value is exceeded;
8. Data storage function, can store 128 test values;
9. Data output function, the data can be input into the computer through the data line for various analysis;
10. Green and environmental protection, automatic shutdown after 10 minutes of no operation;
11. High-quality charging power supply. The charging voltage is available from 100V to 240V, which can be adapted to most areas at home and abroad. There are short circuit, leakage, overload protection functions;
12. 2 sets of installation dimensions, suitable for most test machines at home and abroad, convenient for users to install on the machine;
13. The unique switch contact on-off force test function makes the switch on-off force test more accurate;
14. 6-bit large screen display.

Second, the sensor specifications are shown in Table 1, and the push-pull force gauge model specifications are shown in Table 2.

#### 1. Sensor specification table



钢丝绳拉力	量程	钢丝绳直径	A	B	C
1T	1T	$\phi 6 \sim \phi 14$	160	30	60
2T	1T	$\phi 10 \sim \phi 18$	160	30	60
5T	2T	$\phi 16 \sim \phi 26$	180	34	68
10T	5T	$\phi 24 \sim \phi 36$	200	40	80
20T	10T	$\phi 24 \sim \phi 36$	240	46	90

2. Model specification table of sensor external push-pull force gauge

型号规格	HD1T	HD2T	HD5T	HD10T	HD20T
最大负荷值	10KN	20KN	50KN	100KN	200KN
负荷分度值	0.01 KN	0.01KN	0.01 KN	0.1KN	0.1KN
	0.001Mg	0.001Mg	0.001Mg	0.01Mg	0.01Mg
	0.001Klb	0.001Klb	0.001Klb	0.01 Klb	0.01 Klb
示值误差	$\pm 0.5\%$				$\pm 1.0\%$
单位	N (KN)    kg (Kg或t)    lb (Xlb)				
输出接口	Rs232    九孔插座				
电源	充电电池    充电器充电电压 (100V~240V)				
传感器结构	S型或柱型高精度传感器 (外置式)				
工作温度	5℃ ~ 35℃				
运输温度	-10℃ ~ 60℃				
相对湿度	15%~80%RH				
工作环境	周围无震源及腐蚀性介质				
净重	~400g+传感器重量				
主机外形尺寸	230×66×36    mm				

注：“Mg-兆克或t-吨”在显示屏上显示为“t kg”