

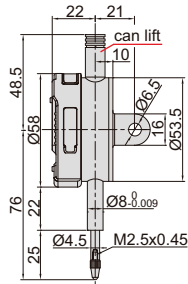
METRIC DIGITAL INDICATORS

DATA
OUTPUT

**INSPECTION
CERTIFICATE**
TRACEABLE TO NIST



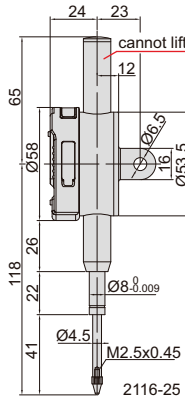
2116-10



2116-10
2116-101



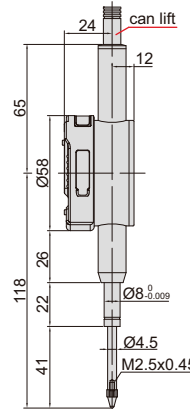
2116-251



2116-25
2116-251



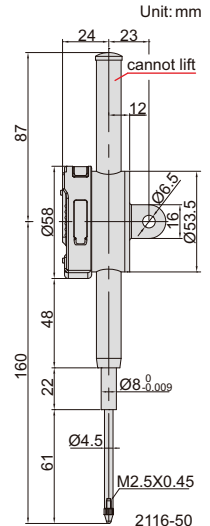
2116-25P



2116-25P
2116-251P



2116-501



2116-50
2116-501

- Button function: on/off, zero, data preset, change measuring direction, absolute/incremental measurement
- 0-6 hours automatic power off time can be set
- Switchable high/low frequency measurement mode, high frequency mode is suitable for high speed moving of spindle and has large power consumption, low power consumption in low frequency mode
- Keep preset data in memory after restart
- CR2032 battery, automatic power off
- Data output
- Optional accessory: data output cable (code **7315-50M**, **7302-40M**, **7305-40M**), backs (page 176~177), contact points (page 173~175)

Resolution 0.001mm

| Code | Range | Accuracy | Hysteresis | Maximum measuring force | Remark |
|------------|--------|----------|------------|-------------------------|--------------------------|
| 2116-101F* | 12.7mm | 5µm | 2µm | 1.5N | flat back |
| 2116-251F* | 25.4mm | 5µm | 3µm | 2.2N | flat back |
| 2116-501F* | 50.8mm | 6µm | 3µm | 2.5N | flat back |
| 2116-101* | 12.7mm | 5µm | 2µm | 1.5N | lug back |
| 2116-251* | 25.4mm | 5µm | 3µm | 2.2N | lug back |
| 2116-501* | 50.8mm | 6µm | 3µm | 2.5N | lug back |
| 2116-251P* | 25.4mm | 5µm | 3µm | 2.2N | flat back, with lift cap |
| 2116-501P* | 50.8mm | 6µm | 3µm | 2.5N | flat back, with lift cap |

Resolution 0.01mm

| Code | Range | Accuracy | Hysteresis | Maximum measuring force | Remark |
|-----------|--------|----------|------------|-------------------------|--------------------------|
| 2116-10F* | 12.7mm | 20µm | 10µm | 1.5N | flat back |
| 2116-25F* | 25.4mm | 20µm | 10µm | 2.2N | flat back |
| 2116-50F* | 50.8mm | 30µm | 10µm | 2.5N | flat back |
| 2116-10* | 12.7mm | 20µm | 10µm | 1.5N | lug back |
| 2116-25* | 25.4mm | 20µm | 10µm | 2.2N | lug back |
| 2116-50* | 50.8mm | 30µm | 10µm | 2.5N | lug back |
| 2116-25P* | 25.4mm | 20µm | 10µm | 2.2N | flat back, with lift cap |
| 2116-50P* | 50.8mm | 30µm | 10µm | 2.5N | flat back, with lift cap |

2116-251P/501P/25P/50P



spindle lift knob is included



*Supplied with manufacturer inspection certificate traceable to NIST USA