

LINEAR BALL BEARINGS  
FOR TEN MILLION TIMES USE

ABSOLUTE ENCODER, THE ORIGINAL  
DATA REMAINS AFTER POWER OFF

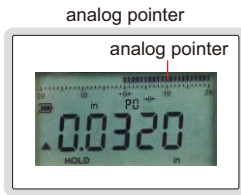
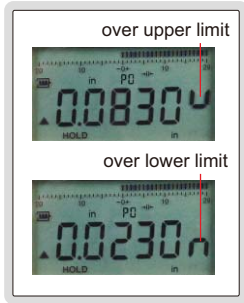
# HIGH PRECISION ELECTRONIC INDICATORS

DATA  
OUTPUT

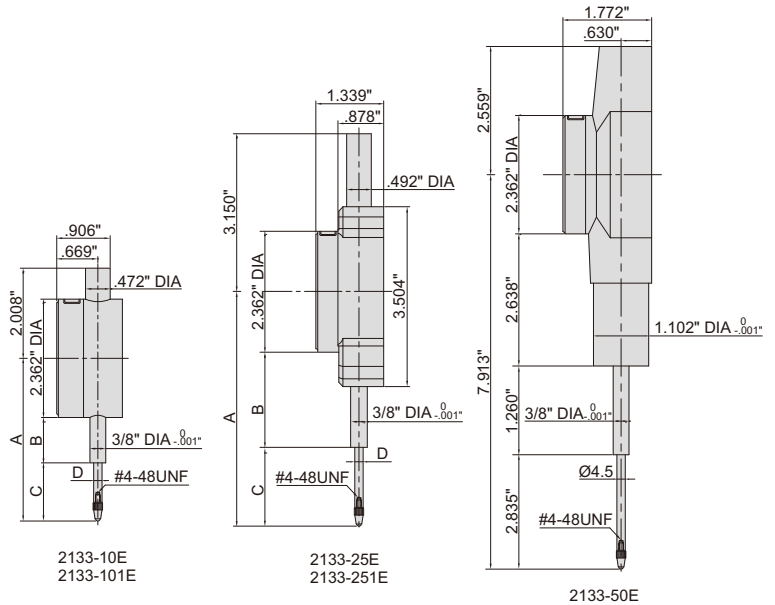
ATTENTION: RECHARGEABLE BATTERY,  
FOR 24 HOURS CONTINUOUS WORKING



warning when  
over tolerance



- Linear ball bearings for ten million times use
- Absolutely encoder, the original data remains after power off
- Reading in digital and analog
- Data output
- Button function: data output, tolerance, data preset, data hold, measuring direction change, max./min./TIR, power off time, on/off, mm/inch, adjust resolution
- Power: rechargeable battery, for 24 hours continuous working
- Optional accessory: contact points (page 73) wireless transmitter, part no. **7315-60** data output cable (keyboard format), part no. **7302-60** data output cable (serial port format), part no. **7305-G60** (cable length 10ft, optional cable length maximum 50ft; RS232 protocol, optional RS485 protocol)



### Low precision

Carbide probe

Adjustable resolution: .00002"/0.0005mm  
.00005"/0.001mm  
.0005"/0.01mm

Part No.	Range	Accuracy	Hysteresis	A	B	C	D (DIA)	Remark
<b>2133-10E*</b>	.5"/12.7mm	±.00012"	.00006"	2.969"	.811"	.976"	.197"	flat back
<b>2133-25E*</b>	1"/25.4mm	±.00012"	.00006"	4.311"	1.516"	1.614"	.197"	flat back
<b>2133-50E*</b>	2"/50.8mm	±.00012"	.00006"	—	—	—	—	flat back

### High precision

Ruby probe

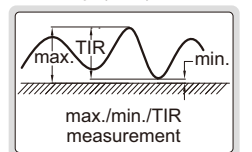
Adjustable resolution: .00001"/0.0002mm  
.00005"/0.001mm  
.0005"/0.01mm

Part No.	Range	Accuracy	Hysteresis	A	B	C	D (DIA)	Remark
<b>2133-101E*</b>	.5"/12.7mm	±.00006"	.00004"	3.047"	1.024"	.976"	.157"	flat back
<b>2133-251E*</b>	1"/25.4mm	±.00008"	.00004"	4.571"	1.516"	1.673"	.157"	flat back

spindle lift knob is included



max./min./TIR



\* Supplied with manufacturer inspection certificate traceable to NIST USA