

# WIRELESS HIGH PRECISION ELECTRONIC INDICATORS

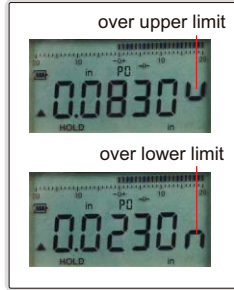
ATTENTION: RECHARGEABLE BATTERY, FOR 24 HOURS CONTINUOUS WORKING

LINEAR BALL BEARINGS FOR TEN MILLION TIMES USE

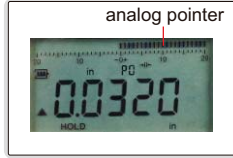
ABSOLUTE ENCODER, THE ORIGINAL DATA REMAINS AFTER POWER OFF

**INSPECTION CERTIFICATE**  
TRACEABLE TO NIST

warning when over tolerance



analog pointer



2134-10E

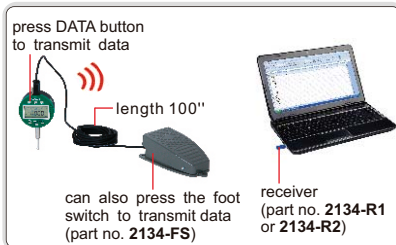


2134-25E

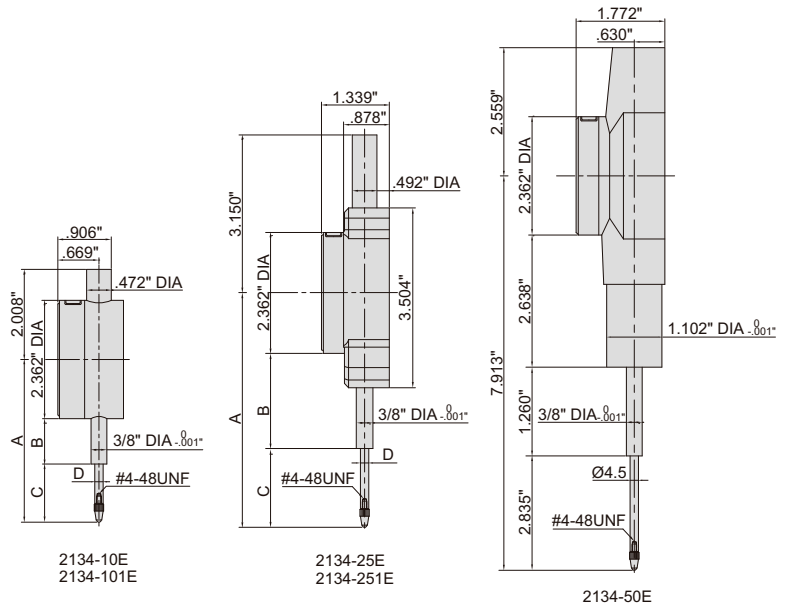


2134-50E

Transmit data



- Built-in wireless transmission, ZigBee single
- Linear ball bearings for ten million times use
- Absolutely encoder, the original data remains after power off
- Reading in digital and analog
- Button function: data output, tolerance, data preset, data hold, measuring direction change, max./min./TIR, power off time, on/off, mm/inch, adjust resolution
- Power: rechargeable battery, for 24 hours continuous working
- Optional accessory: contact points (page 73) foot switch, part no. **2134-FS** wireless receiver, part no. : **2134-R1**(keyboard format) **2134-R2**(serial port format)



## Low precision

Carbide probe

Adjustable resolution: .00002\"/0.0005mm  
.00005\"/0.001mm  
.0005\"/0.01mm

Part No.	Range	Accuracy	Hysteresis	A	B	C	D(DIA)	Remark
2134-10E*	.5\"/12.7mm	±.00012\"	.00006\"	2.969\"	.811\"	.976\"	.197\"	flat back
2134-25E*	1\"/25.4mm	±.00012\"	.00006\"	4.311\"	1.516\"	1.614\"	.197\"	flat back
2134-50E*	2\"/50.8mm	±.00012\"	.00006\"	—	—	—	—	flat back

## High precision

Ruby probe

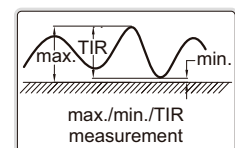
Adjustable resolution: .00001\"/0.0002mm  
.00005\"/0.001mm  
.0005\"/0.01mm

Part No.	Range	Accuracy	Hysteresis	A	B	C	D(DIA)	Remark
2134-101E*	.5\"/12.7mm	±.00006\"	.00004\"	3.047\"	1.024\"	.976\"	.157\"	flat back
2134-251E*	1\"/25.4mm	±.00008\"	.00004\"	4.571\"	1.516\"	1.673\"	.157\"	flat back

spindle lift knob is included



max./min./TIR



\*Supplied with manufacturer inspection certificate traceable to NIST USA