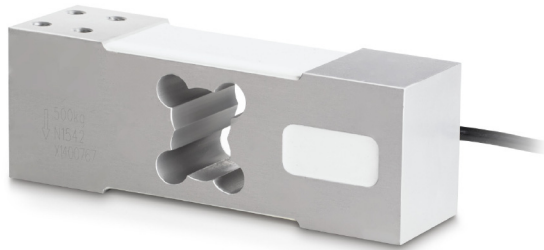


# KERN CP200-3P8

Aluminium singlepoint load cell



## Measuring system

|                                    |         |
|------------------------------------|---------|
| Combined Error:                    | 0,020 % |
| Load cell connection:              | 6-wire  |
| Nominal sensitivity:               | 2       |
| OIML class:                        | C3      |
| Resolution Load cell à Verifiable: | 3000 e  |
| Weighing capacity [Max]:           | 200 kg  |
| Y value:                           | 10000   |

## Environmental conditions

|                                |        |
|--------------------------------|--------|
| Maximum operating temperature: | 65 °C  |
| Maximum operating temperature: | 40 °C  |
| Minimum ambient temperature:   | -35 °C |
| Minimum operating temperature: | -10 °C |

## Category

|        |        |
|--------|--------|
| Brand: | Sauter |
|--------|--------|

## Packaging & shipping

|                               |                   |
|-------------------------------|-------------------|
| Delivery:                     | 24 h              |
| Dimensions packaging (WxDxH): | 180 x 110 x 75 mm |
| Gross weight:                 | 1,750 kg          |
| Net weight:                   | 1,700 kg          |
| Shipping method:              | Parcel service    |

## Construction

|               |     |
|---------------|-----|
| Cable length: | 3 m |
|---------------|-----|

## Piktogramme

STANDARD

