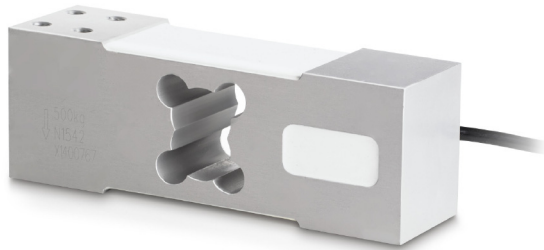


# KERN CP50-3P8

Aluminium singlepoint load cell



## Measuring system

Combined Error:	0,020 %
Load cell connection:	6-wire
Nominal sensitivity:	2
OIML class:	C3
Resolution Load cell à Verifiable:	3000 e
Weighing capacity [Max]:	50 kg
Y value:	10000

## Environmental conditions

Maximum operating temperature:	65 °C
Maximum operating temperature:	40 °C
Minimum ambient temperature:	-35 °C
Minimum operating temperature:	-10 °C

## Category

Brand:	Sauter
--------	--------

## Packaging & shipping

Delivery:	24 h
Dimensions packaging (WxDxH):	180 x 110 x 75 mm
Gross weight:	1,750 kg
Net weight:	1,700 kg
Shipping method:	Parcel service

## Construction

Cable length:	3 m
---------------	-----

## Piktogramme

STANDARD

