



PCE Americas Inc.
711 Commerce Way
Suite 8
Jupiter
FL-33458
USA
From outside US: +1
Tel: (561) 320-9162
Fax: (561) 320-9176
info@pce-americas.com

PCE Instruments UK Ltd.
Units 12/13
Southpoint Business Park
Ensign way
Hampshire / Southampton
United Kingdom, SO31 4RF
From outside UK: +44
Tel: (0) 2380 98703 0
Fax: (0) 2380 98703 9
info@industrial-needs.com

www.pce-instruments.com/english
www.pce-instruments.com

Manual

Vibration Analyser Sensor Switch

PCE-VS 10



Instruction Manual

Vibration Switch D7 9!VS10

Application and Operation

The instrument enables simple and cost efficient monitoring of vibration on rotating machines, for example, in the frame of preventative maintenance to DIN/ISO 10816. Likewise, it can be used as a limit switch for a diverse range of processes involving vibration and shock. Thanks to its inbuilt piezoelectric accelerometer and signal processing, by means of a micro controller, the vibration switch operates reliably and with high reproducibility.

Selectable filters and integrators, variable alarm settings and the high level of protection IP67 make REG/VS10 ideal for a variety of applications, for example:

- Monitoring compressors, pumps, fans, generators
- Rail vehicles
- Quality control
- Transporting fragile goods
- Surveillance of doors and gates
- Impact and drop testing

By means of the inbuilt piezoelectric accelerometer, REG/VS10 monitors vibrations perpendicular to the lid of its casing. It measures both positive and negative excitation.

REG/VS10 has a digital signal processor and a relay output for signalization. It indicates alarm status via green and red LED's.

Parametrization

The parametrization is carried out with PC software via a common micro USB cable. To connect the USB cable, unscrew the four socket head screws and remove the lid. Inside you will see the USB connector (Figure 1).

Caution: If a USB cable is connected, the power will be supplied by the PC. Make sure the power is never supplied via a USB cable and the connection terminals simultaneously.

When connecting REG/VS10 to a PC for the first time, you will be prompted install the driver. The driver file "MMF_VCP.zip" can be found on our website:

Unzip and save both the enclosed files to a directory on the computer.

When Windows requests the location of the instrument driver, enter this directory. The instrument driver is signed and runs with Windows XP, Vista, 7, 8 and 10.

The driver installs a virtual COM Port on the PC and operates in CDC mode, thus enabling simple control via the ASCII commands.

To setup the REG/VS10 the PC-Software *VS1x* is available under the above link. Unzip the file *vs1x.zip* into a directory on your PC and then start *setup.exe*. The installation directories can be changed if needed. The program is a LabView application and for this reason installs several components of the LabView Run-Time environment from National Instruments.

Once installed, the program is located under *Metra Radebeul* in the start menu of your computer. (Figure 2).

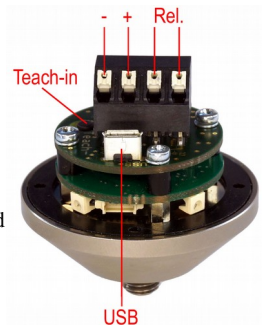


Figure 1: Connections

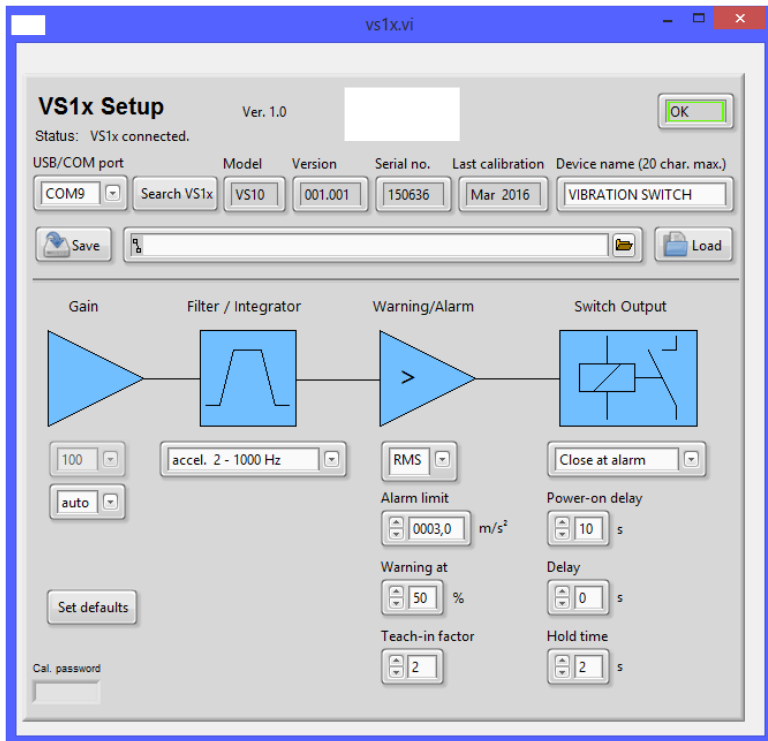


Figure 2: Parameter Program

To establish a connection to REG/VS10, press *Search VS1x*. The program searches COM-Ports 1 to 50 for the instrument. As soon as it has been found the status report *VS1x connected* appears and the instrument settings are read.

In the row next to the COM port number you will find the non-editable data, model, version, serial number and date of calibration. You can enter the device name yourself.

When entering the gain, this refers to the analogue pre-amplification before the analogue-to-digital converter stage. The gain levels 1, 10 and 100-fold are available for selection as well as automatic gain switching. In many cases automatic gain setting is most appropriate. It can, however, occasionally be disadvantageous if single shock pulses are measured. If previously only low amplitudes had been recorded, it may occur that short single impulses fail to trigger the alarm signal immediately, due to the switching of the gain. In such cases a fixed gain should be set according to the maximum expected amplitude (*fix*).

Under *Filter / Integrator* there is a row of high and low pass filter combinations to choose from. Depending on the area of application, you can monitor either acceleration without integration (*accel.*) or the single integrated signal of velocity (*veloc.*). For vibrations below 1 kHz, for which the resulting energy is of relevance, it is recommendable to monitor velocity, whereas for measurements involving higher frequencies and impacts, acceleration is usually preferred.

Under *Warning/Alarm* you can find the limit value settings. Here you can select whether *RMS* values or *Peak* values are to be monitored. Monitoring peak values can be advantageous for recording single events, while RMS is relevant for trend monitoring, for example, in the field of machine condition monitoring. The *Alarm limit* is entered in the unit of measurement (m/s² or mm/s). The instrument can give a warning signal before it reaches the alarm limit. The warning threshold is entered as a percentage of the alarm limit.

The *Teach-in factor*, is the factor by which the vibration amplitude currently being measured is multiplied, when by pressing the **Teach-in** (Figure 2) button, the alarm limit is automatically set. The Teach-in button is accessible without opening the casing, you simply need to remove the screw cap. It is useful for setting the alarm limit when there are no specific values available.

Under *Switch Output* you can determine the switching of the relay output. First of all, you can choose whether the relay should open or close when the warning and alarm limit are exceeded. *Power-on delay* is the duration of time between the power supply being connected and the relay being activated. It eliminates false alarms during the settling process. *Delay* is the period of time which occurs between the alarm limit being exceeded and the relay switching. It helps prevent short shock pulses. *Hold time* is the time during which the relay retains its switch status, after the vibration amplitude has dropped below the warning and alarm limit again. It guarantees a minimum duration of time for the signaling of alarm events.

The programmed settings are immediately transferred to REG/VS10. They can additionally be saved to a file (*Save*). The file contains the ending *.xml*. By pressing *Load* you can reload the settings.

Set defaults restores REG/VS10 to its factory settings.

Installation and Operation

Typical attachment points for REG/VS10 are rigid components such as, cast iron cases, bearing houses, profiles and foundations. Flexible components like thin sheet metal or plastic parts are unsuited. The REG/VS10 can be mounted in the vertical or horizontal direction, preferably by means of the supplied M8 screw. It is sufficient to tighten the screw by hand, without using a tool.

The cable is lead-in through a waterproof cable gland. It can be used for multi-wire cables with diameters between 3.5 and 5.5 mm. The power supply (5 .. 30 V / <100 mA) is connected to the screw terminals *0V* (negative pole) and *+U* (positive pole) (Figure 2). It is protected against reverse polarity.

REG/VS10 contains a PhotoMOS relay without mechanical contacts. The relay contacts are located on the two right hand terminal pins. Please pay attention to the limit values for electrical load.

The alarm status of REG/VS10 is indicated by the four LED's on the outer casing. If all LED's are lit green, there is no warning or alarm. If two LED's are lit red and two green this indicates that the warning limit has been exceeded. If all LED's are lit red, the alarm limit has been exceeded.

Technical Data

Monitoring Values	Peak value and RMS value of vibration acceleration or vibration velocity
Measuring Range	0.1 to 1000 m/s ² acceleration, velocity frequency dependent
High Pass Filter	0.1/2/5/10/20/50/100/200/500/1000 Hz (acceleration) 2/5/10/20/50 Hz (velocity)
Low Pass Filter	0.1/0.2/0.5/1/2/5/10 kHz (acceleration); 1 kHz (velocity)
Relay Output	PhotoMOS relay; SPST; max. 60 V / 0.5 A (AC/DC); Open/close programmable, connection via screw terminals
Alarm Delay/ Hold Time	0 – 99 s / 0 – 9 s
USB Connection	USB 2.0 full speed, CDC mode, micro USB socket
Power Supply Voltage	5 to 30 V DC; < 100 mA via screw terminals or USB supply voltage
Protection Grade	IP67
Operating Temperature Range	-40 – 80 °C
Weight	160 g
Dimensions	50 mm Ø, 52 mm height
Mounting	M8 thread Pin; 8 mm length; coupling surface: Ø 25 mm