

EMIN

Testing & Measuring Everything

SENDIG - S99-4 Channel Vibration Analyzer



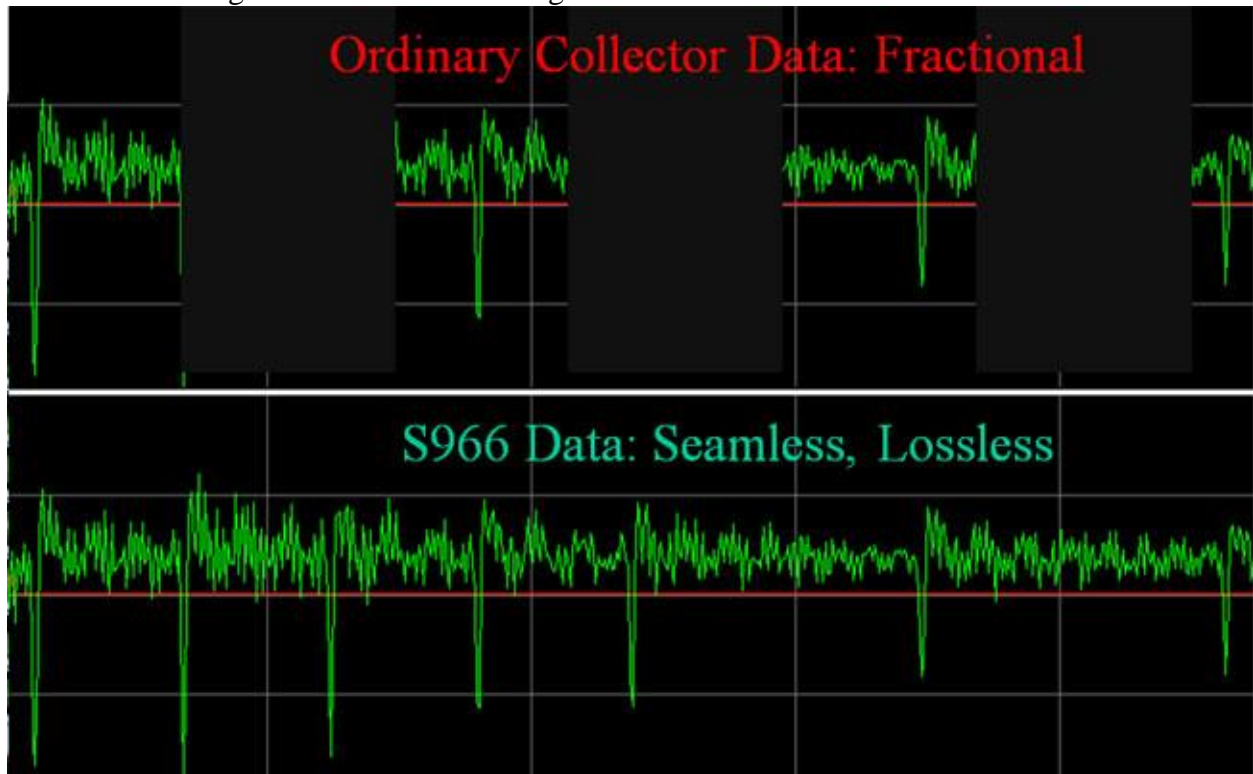
Product Introduction

S966 4-Channel Vibration Analyzer

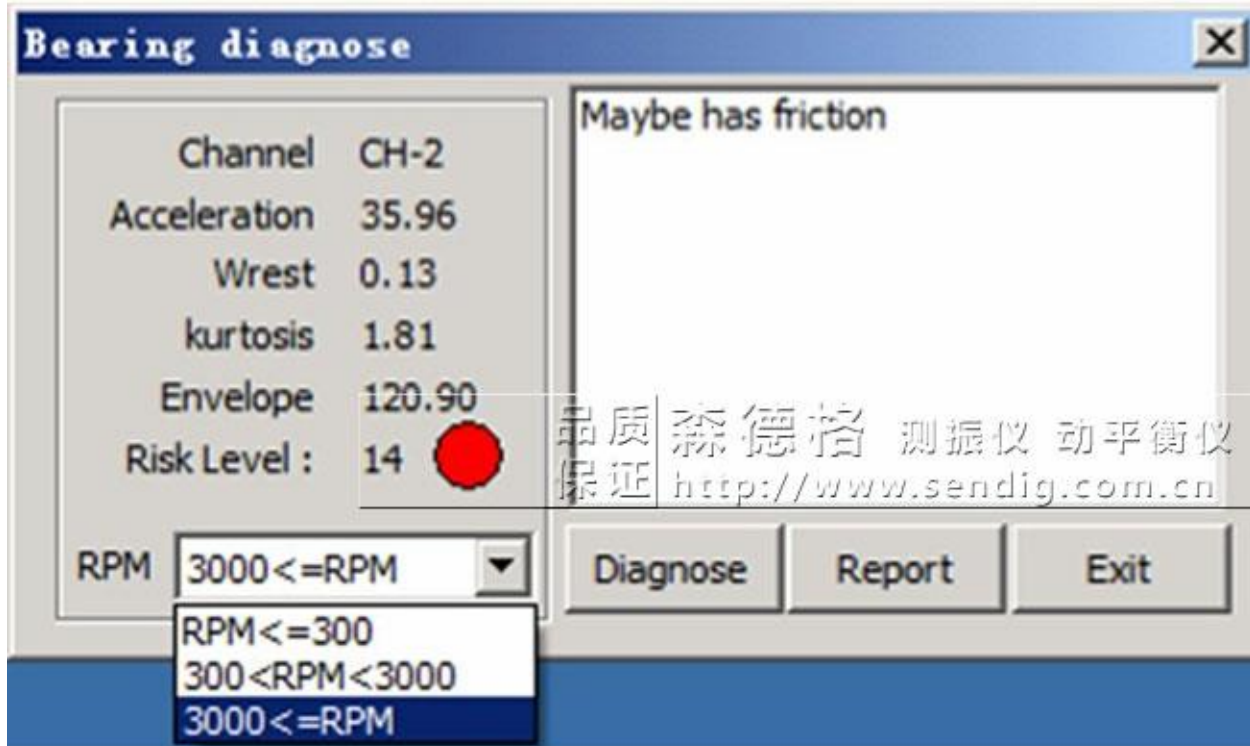
Simultaneously Seamless Measure and Record with Low Frequency Option, Auto Diagnosis

Features:

- ★4-Channels long-time seamless recording

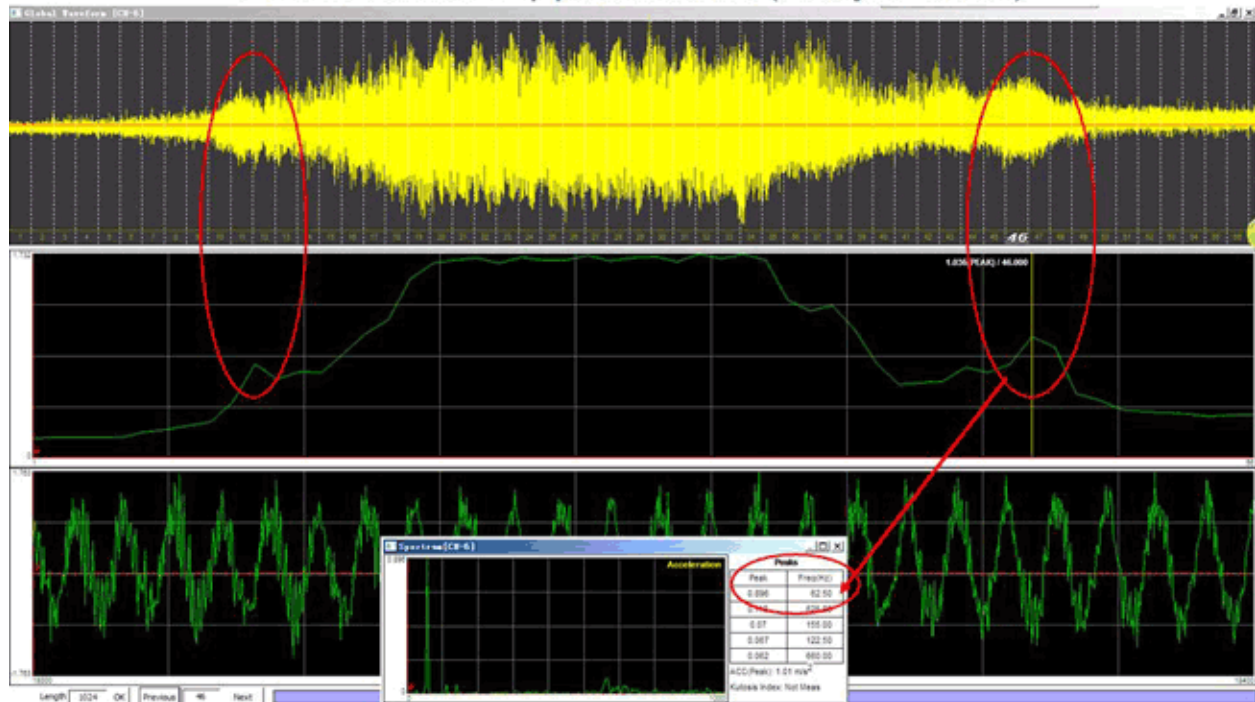


- ★Input: Charge or IEPE Accelerometer, Voltage
- ★Overall values, Raw waveform, Spectrum, Bode Graph, 1X Phase, 1/2 planes Balancing
- ★Non-stable Vibration Analysis
- ★Startup-Shutdown Recording & Analysis



- ★400-3200 Lines Spectrum
- ★Frequency Span: 10,20,50,100,200,500,1k,2k,5k,10kHz,15kHz
- ★Dual diagnostic Expert System: Automatic & Accurate, MS-Word Format diagnosis report
- ★ISO-10816 included, Health condition indicated by Green/Yellow/Red Light.
- ★Specific bearing fault detection tool for even non-steady working element bearing.

A whole start-run-stop process record (Totally 30 second)



Resonance , at 62.5Hz, appears at both startup and shutdown period

Specification:

- ★Frequency Range: 0.5Hz~15kHz(3dB);
2.5Hz~10kHz(1dB); 4Hz~5kHz(0.5dB)
- ☆RPM Range: 60~60000 RPM
- ★Vibration Measurement Range/Resolution
 - Acceleration Peak: 100m/s² 0.1m/s²
 - Velocity RMS : 100mm/s 0.1mm/s
 - Displacemnr P_P: 2mm 1
 - Voltage Peak : +10V 0.1mV
- ☆Auto Range & Manual Range Selectable
- ★4th-order Anti-aliasing Filter
- ☆Powered by USB, No additional power required
- ★2-Channels & 8-Channels version optional
- ☆Robust Metal Carry Case for Field Testing