

K-3980 Battery Load Bank



Model No.: LB-2415 (12-220V 200A)

Typical application: Telecom, Power and others

LB-2415 DC load unit is specially designed for discharge experiment, battery capacity test, battery maintenance, engineering examination and other tests for DC power with load. It covers a wide range of voltages from 10V to 253V (nominal voltage: 12V-220V) with max discharge current of 200A. This makes it applicable for battery discharge in different areas of application.

With its optional Data Acquisition Case (DAC), you will have a real-time monitoring for the whole process of discharge with wireless communication in PC.

Our Advantages

- 1) K-3980 has different customized models to meet requirement of customers from various industries exactly.
- 2) Its optional data loggers enables a wireless communication with computer. And it will monitor the whole process of discharge including voltage of EACH cell.
- 3) Standard discharge function and other functions like assistant discharge, parallel load, external load, charge monitor. Compatible with non-Kongter load banks.
- 4) Rugged, reliable and durable with very good price.

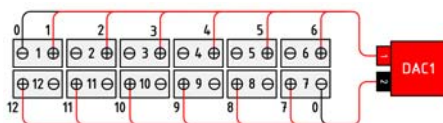
Features

- ◆ Optional wireless DAC enables real-time PC monitor during measurement
- ◆ It sets 4 conditions for discharge auto shut-down:
Discharge time, discharge capacity, string voltage and cell voltage
- ◆ Continued discharge available when previous discharge is stop abnormally
- ◆ Parallel connection of two units for higher discharge current
- ◆ Assistant discharge to add load to even non-Kongter load banks
- ◆ Can monitor measurement of other load banks or battery charger
- ◆ Accurate data measurement and vivid waveforms of PC software
- ◆ Auto sorting for lag-out batteries during discharge
- ◆ Safe circuits avoids damage to battery during measurement
- ◆ Powerful management software for data analysis and report generation
- ◆ Automatic protection upon over-heating and overload

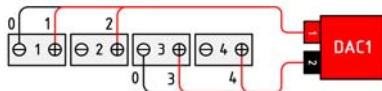
Optional DAC



Connection with 1.2V or 2V cells:



Connection with 6V or 12V cells:



Optional Data Acquisition Case (DAC)

Each DAC is recording voltage of up to 12 cells. It has wireless communication with K-3980 main unit and PC. And it is capable to measure all type of batteries (1.2V, 2V, 6V & 12V). Kongter also offers customized DAC for other battery types.

DAC numbers are easily expandable to cover more battery volumes.

Its Connection:

One DAC is connected with 12 cells of 1.2V, 2V or 4 cells of 12V (or 6V). Therefore, in different battery systems, they require different amount of DACs. With DAC, K-3980 and Kongter PC software will be able to monitor and record voltage of each cell together with other parameter like String Voltage, Current, Discharge Capacity and so on.

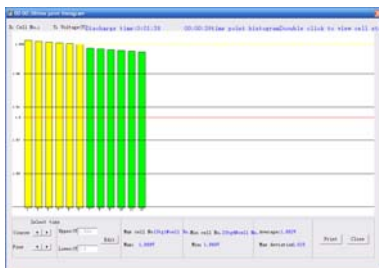
Composition:

Standard parts:

- ◆ Main unit of load bank
- ◆ Data View software
- ◆ Set of 3m/10ft load cables
- ◆ 3m/10ft voltage test leads
- ◆ PC communication terminal
- ◆ Ground cable
- ◆ AC Power cord
- ◆ USB with backup info
- ◆ Antenna

Optional:

- ◆ DAC package
- ◆ Current clamp for external loads
- ◆ Parallel load cable



K-3980 PC Software

Technical Parameters

Power supply	AC 220V/110V, 50/60Hz;
Cell type	1) Standard: 1.2V ¹ , 2V, 6V and 12V 2) Customized: 12V ONLY or other uncommon battery types.
Discharge voltage range	10V-13.8V (nominal: 12V): 0-50A 10V-27.6V (nominal: 24V): 0-100A 10V-55.2V(nominal: 48V): 0-200A 10V-132V(nominal: 110V): 0-75A 10V-260V(nominal: 220V): 0-150A
Accuracy	Current: 1% Voltage: 0.5% – 0.8%
Resolution	Current: 0.1 A or 0.5% Voltage: 0.001 V
Sampling Interval	5s –1min
Discharge pattern	Constant current
Display	128*64 pixel LCD
Data transfer	USB, Radio Frequency (for DAC to load bank)
Operation Temperature	0°C ~40°C (32 – 104 °F)
Humidity	5%~90% Relative humidity
Standard	CE marking, EMC standard
Main Unit Dimension	740*400*730mm
Main unit Weight	55 kg

*NOTE:

- 1) Quantity of DAC and cable in standard DAC package are based on 2V, 6V and 12V. For measurement of 1.2V Ni-cd batteries, you will require some more DACs and relevant cables.

Kongter PC Software

All standard load units of K-3980 come with PC software. With the software, you have a real-time data monitoring, analyze the testing data and easily print out the complete report.

