



Pioneered with built-in coaxial light, the AM7515MT8A answers the needs of brightfield observation with superior image quality at 700~900x magnifications. Through the use of Flexible LED Control (FLC), the AM7515MT8A not only can switch between brightfield and darkfield freely but also can mix them together for more possibilities on highlighting the details. The AM7515MT8A provides Automatic Magnification Readings (AMR) which was designed to optimize the measurement with efficiency and accuracy.

.Overview



High optical resolution

The superior optics adopted in the Edge series reveals the finest details, answering the needs of the most demanding microscopy applications.



5.0 Megapixels

Thanks to the low loss MJPEG compression, the advanced CMOS image sensor allows to transmit fluid and crisp image with resolution up to 2592x1944.



Brightfield/Darkfield

Without the need of other accessories, the brightfield and darkfield illumination can be provided separately or coordinated with each other to explore for more details.



Automatic Magnification Reading (AMR)

Without the hassle to stop and check the magnification for doing a measurement, the AMR detects the magnification rate automatically through the software, making the measurement be a more efficient, accurate, and pleasant process.



Scroll Lock

The scroll lock ensures the focus knob staying at the desired focus or magnification position without worry of unintentional movement.



Robust housing

The metal housing made of aluminum alloy offers compelling advantages of protection and endurance.



Interchangeable caps

The interchangeable caps provide adaptability to numerous applications with alternative lighting or object interface, such as but not limited to diffused-light, ring-light, and coaxial-light etc.



Flexible LED Control (FLC)

Tasking with software, the FLC maximizes illumination flexibility by offering independent on/off control to the four LED quadrants in addition to the 6-levels intensity adjustment capability.

Interchangeable front caps



N3C-C / Close Cap

This cap protects the lens and LED lights from contamination of dust, debris, or moisture.



N3C-E / Extended Open Cap

Dino-Lite Edge (stand type) will focus at approximately 200x when the cap touches surface.



N3C-O / Open Cap

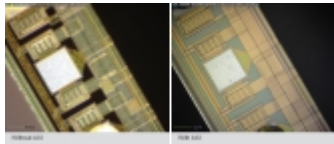
This is the standard cap for normal usage.

Information about working distance and field of view

M	WD	FOV (x)	FOV (y)	DOF
700	6.4	0.56	0.400	
750	6.3	0.52	0.375	
800	6.1	0.48	0.350	
850	6.0	0.46	0.330	
900	5.9	0.43	0.315	0.009

M = magnification rate WD = working distance (without front cap) FOV = field of view
DOF = depth of field Unit = mm

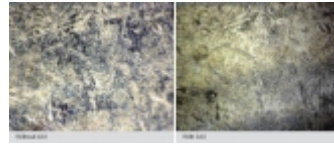
Gallery



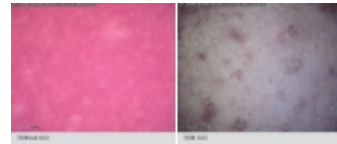
IC



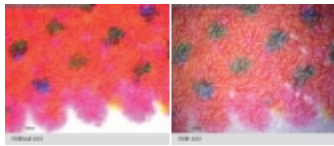
Wafer



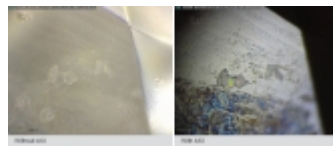
Dime Coin



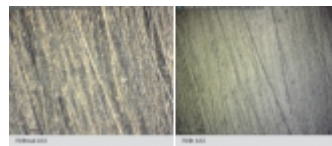
Red Ceramic



Printing Name Card



Diamond



Watch Glass Surface



AM7515MT8A with high magnification and coaxial light

Specification

Model	AM7515MT8A Dino-Lite Edge
Interface	USB 2.0
Product Resolution	5M pixels (2592x1944)
Magnification	700x~900x
Frame Rate	10fps in 5MP/3MP/2MP, MJPEG 25fps in 1.3MP, MJPEG 30fps in VGA, MJPEG
Lighting	8 white LEDs
Polarizer	Yes
Microtouch	Yes
Operating System Supported	Windows 10, 8, 7, Vista, XP Mac OS 10.9 or later

System Requirements

- Intel Core2 Duo @ 2.20 GHz/AMD Athlon X2 Dual Core BE-2400 (2.3GHz)
- 20GB available HD space
- 2GB available RAM or more
- 512MB video card or more
- CD-ROM drive for installation
- USB 2.0

Calibration Function	Yes
Measurement Function	Yes
Unit Dimension	10.7cm (H) x 3.2cm (D)
Unit Weight	139g

