

AM5212ZT



The Dino-Lite AM5212ZT is one of the latest TV-interface microscopes that feature an adjustable polarizer to help suppress unwanted glare or reflections. This Edge series is suitable for a wide range of applications including the inspection, repair and assembly involving reflective or translucent materials, with examples such as soldering, quality inspection, or jewelry fabrication.

Combined with totally revamped optics and high resolution 960H, it is the latest upgrade over its predecessors such as the AM4112 and AM412 microscopes with TV output. Also, like all standard magnification models on the Edge series, this microscope incorporates a 20X to 220X magnifying range and interchangeable front caps available to suit different purposes. The current available options are close cap, open cap, diffuser cap, extended cap, long cap, and sidelight cap.

The AM5212ZT does not require a computer or bundled software to operate and works simply by connecting it to a conventional TV using the supplied composite video cable. It is available in either NTSC or PAL video standards depending on your region of residence.

Overview



High quality optics

This Dino-Lite Edge series microscope maximizes observed details with state-of-the-art lens design and super sharp resolving power.



Convenient flexible magnification

The Dino-Lite is capable of variable magnification with a range of 20~220x depending of working distance by simply zooming in or out with just a rotating dial.



Adjustable polarizer

This model includes a freely adjustable polarizer that is useful for suppressing unwanted glare or reflection from object surface to any extent, making it ideal for most applications.



TV connectivity

Connect the microscope to a TV monitor via the composite video cable for either NTSC or PAL video standards in 960 x 480 high resolutions.



MicroTouch button

Switch on/off the LEDs quickly and conveniently with the MicroTouch button. This small, round, touch-sensitive button is configured to allow you take control of the lighting during observation with a simple tap of a finger.



Adaptable cap design

This model features a detachable and interchangeable front cap that extends its range of use, as different caps are available for various applications. Removing the front cap provides greater working distance and access to the full magnification range.

Interchangeable Front Caps



N3C-C / Close Cap

This cap protects the lens and LED lights from contamination of dust, debris, or moisture.



N3C-D / Diffuser Cap

This cap diffuses the LED light.



N3C-D2 / Opal Diffuser Cap

This cap diffuses the LED light.



N3C-E / Extended Open Cap

Dino-Lite Edge (stand type) will focus at approximately 200x when the cap touches surface.



N3C-L / Long Cap

This cap is useful to adjust the working focus of Dino-Lite Edge at lower magnification.



N3C-O / Open Cap

This is the standard cap for normal usage.



N3C-S / Sidelight Cap

This cap creates images with more depth and texture.

Information about working distance and field of view

M	WD	FOV (x)
20	40.5	18
50	11	8.5
100	5	4.5
150	7	3
200	-0.6	2.2

M = magnification rate WD = working distance (without front cap) FOV = field of view DOF = depth of field Unit = mm

Specification

Model : AM5212ZT Dino-Lite Edge

Interface : Composite video

Product Resolution : 960H

Magnification Rate : 20x~220x

Microtouch : Tap to turn On/Off LEDs

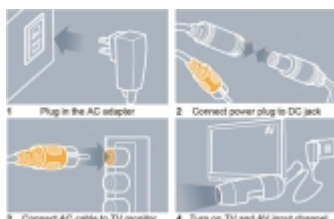
Lighting : 8 white LEDs

Unit Weight : 100g

Unit Dimension : 10.5cm (H) x 3.2cm (D)

Package Dimensions : 16cm(L) x 16cm(W) x 6cm(H)

Gallery



AM5212ZT quick installation



AM5212ZT with RK-10
and RK-10-FX flexible arm

