

AM5018MT



The Dino-Lite Premier AM5018MT is designed for connecting directly to HDTV or LCD monitors with HD 720p format, making the AM5018MT be most suitable for applications such as but not only: quick inspections, assembly lines, presentations, training, and more.

The AM5018MT's MicroTouch provides the convenience to freeze the live video to examine details with a simple tap. The LEDs can also be switched by tap and holding the same MicroTouch for two seconds. In similar to most general purpose Dino-Lite models, it has adjustable magnification from 20x to 50x varied with working distance, and be further zoomed to more than 200x when close to the object.

Overview



HD 720p

View sharp and vibrant details with HD 720p resolution using direct digital DVI interface. The Dino-Lite can be readily used with little effort using a LCD monitor or a large HDTV for detailed observations and impressive presentations.



Up to 200x magnification

Have the freedom to magnify from 20x to 50x the closer the Dino-Lite is to the target, using the Dino-Lite knob to focus for each magnification. Achieve an additional 200x when the Dino-Lite is at close range.



LED Control

Switch the LEDs On/Off for illumination options by simply touching the MicroTouch for two seconds.



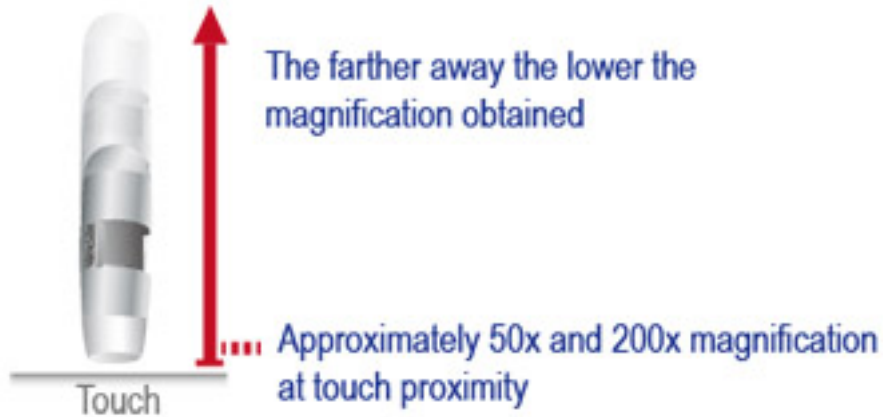
Freeze frame

Choose to take a moment and examine important details by freezing the live video simply by touching the MicroTouch on the Dino-Lite.

Information about working distance and field of view

M	WD	FOV (x)	FOV (y)	DOF
20	48.7	19.6	10.9	
30	21.7	13.0	7.3	
40	9.0	9.8	5.5	
50	1.9	7.8	4.4	
60	-2.3	6.5	3.6	
220	-0.1	1.8	1.0	
230	1.0	1.7	1.0	
240	2.1	1.6	0.9	

M = magnification rate of field WD = working distance (without front cap) FOV = field of view DOF= depth of field
Unit = mm



Specification

Model : AM5018MT Dino-Lite Premier

Interface : DVI

Product Resolution : HD 720p

Magnification Rate : 20x~50x, 200x

Sensor : Color CMOS

Frame Rate : 60fps

Microtouch : LED On/Off - Tap and hold for two seconds

Freeze / unfreeze frame - Tap

Lighting : 8 white LEDs

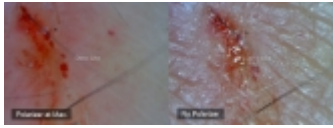
System Requirement : Monitor with DVI interface supporting 720p video input

Unit Weight : 92g

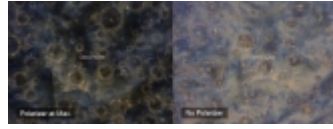
Unit Dimension : 10.5cm (H) x 3.2cm (D)

Package Dimensions : 21.5cm(L) x 18cm(W) x 7cm(H)

Gallery



Polarizer sample



Polarizer sample