

# WIRELESS HIGH PRECISION DIGITAL INDICATORS



DATA  
OUTPUT

LINEAR BALL BEARINGS  
FOR TEN MILLION TIMES  
USE

ABSOLUTE ENCODER, THE  
ORIGINAL DATA REMAINS  
AFTER POWER OFF

ATTENTION: RECHARGEABLE  
BATTERY, FOR 24 HOURS  
CONTINUOUS WORKING



2134-10

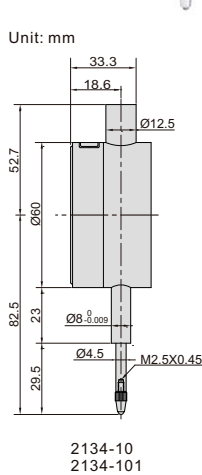


2134-25

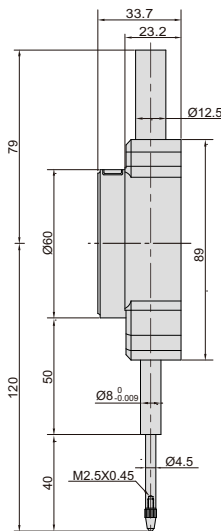


2134-501

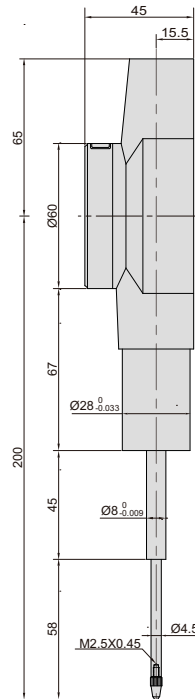
Unit: mm



2134-10  
2134-101



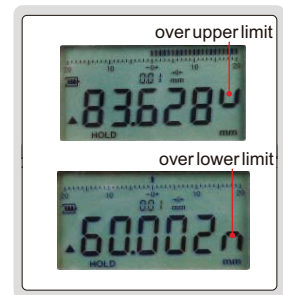
2134-25  
2134-251



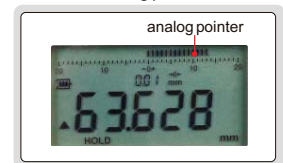
2134-501

- Built-in wireless transmission, ZigBee single
- Linear ball bearings for ten million times use
- Absolutely encoder, the original data remains after power off
- The display flips over when the spindle faces up
- Reading in digital and analog
- Data output
- Button function: data output, tolerance, data preset, data hold, measuring direction change, max./min./TIR, power off time, on/off, mm/inch, analog pointer graduation adjustment, adjust resolution
- Power: rechargeable battery, for 24 hours continuous working

warning when  
over tolerance



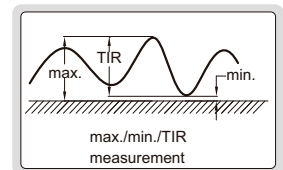
analog pointer



spindle lift knob  
is included



max./min./TIR



Adjustable resolution: 0.0005mm/0.00001"  
0.001mm/0.00001"  
0.01mm/0.0001"

Code	Range	Accuracy	Hysteresis	Remark
2134-10*	12.7mm/0.5"	3µm	1.5µm	flat back
2134-25*	25.4mm/1"	3µm	1.5µm	flat back

Adjustable resolution: 0.0002mm/0.00001"  
0.001mm/0.00001"  
0.01mm/0.0001"

Code	Range	Accuracy	Hysteresis	Remark
2134-101*	12.7mm/0.5"	1.5µm	1µm	flat back
2134-251*	25.4mm/1"	1.8µm	1µm	flat back
2134-501*	50.8mm/2"	3µm	1.5µm	flat back

\* Supplied with manufacturer inspection certificate traceable to NIST USA