



Data logger PCE-T 300 series with stainless steel case
for the prolonged measurement of temperature, with a 172mm sensor / memory for 32,767
values / interface / software for data registration / adjustment of limit values / 303 stainless
steel case

The one channel data logger PCE-T 300 is a small and water resistant device which is powered by batteries and it is designed to be used in the heavy industry. The data logger has a non-volatile internal memory for up to 32,767 measuring values which ensures data-security even when the battery is dead. The software (optional device) can automatically recognise if the data logger is connected and it allows the easy evaluation of various measurement values. Its wide range of temperature (-100 +260 °C) and environmental conditions (-40°C bis +80 °C) as well as its integrated Pt100 sensor with a length of 172 mm allows to use this device for many different purposes. Limit values can be adjusted to show when the desired temperature has been exceeded. Measured data can be viewed and recorded by means of the software which can also program the compact data logger. The measuring quota can also be adjusted (from 2 seconds to 12 hours) or it can be programmed to start recording later (0 ... 180 days). At the following [link](#) you will find the digital data logger which will suit your needs.



- Storage capacity: 32,767 measuring values
- Easy export of the measurement values to MS Excel
- Interface

- Software for data analysis for the PC
or portable computer (optional)

- Phase difference in the register (up to
6 months)

- Adjustable measurement quota (2 s ... 12 h)

- Interface speed: 2400

- Temperature meter powered by batteries

- 172 mm sensor to determine temperature

- Main unit: 303 stainless steel

- Sensor: 304 stainless steel

- Non-volatile memory

- Compact design

[View or Print user manual](#)



Technical specifications:

Measurement range

-100 ... +260 °C in the sensor

Accuracy

± 0.5 %

Resolution

0.05 °C

Sensor

Pt100

Memory capacity

maximum of 32,767 measuring values

Measurement quota/range of the register

adjustable 2 s ... 12 h

Delaying in the starting time

0 ... 180 days

Starting and shutting down time

programmable

Alarm limit

free adjustment

Port

USB/RS232 (the cable to be connected to a PC is
required); 2400 baud

Software

optional

Housing

- Body
- Sensor

303 stainless steel

304 stainless steel

Power

1 x 3.9 V lithium battery for high temperatures
Standard duration 1 year @ +25 °C, 1
measurement per minute

Operating conditions

-40 ... +80 °C/0 ... 100% H.R.

Dimensions

- Body
- Sensor

115 x 26 mm (length x Ø)

172 x 5 mm (length x Ø)

Weight

205 g

PCE-T 300 Software

Professional software for programming the device and for analysing data on computers. The software has the following features:

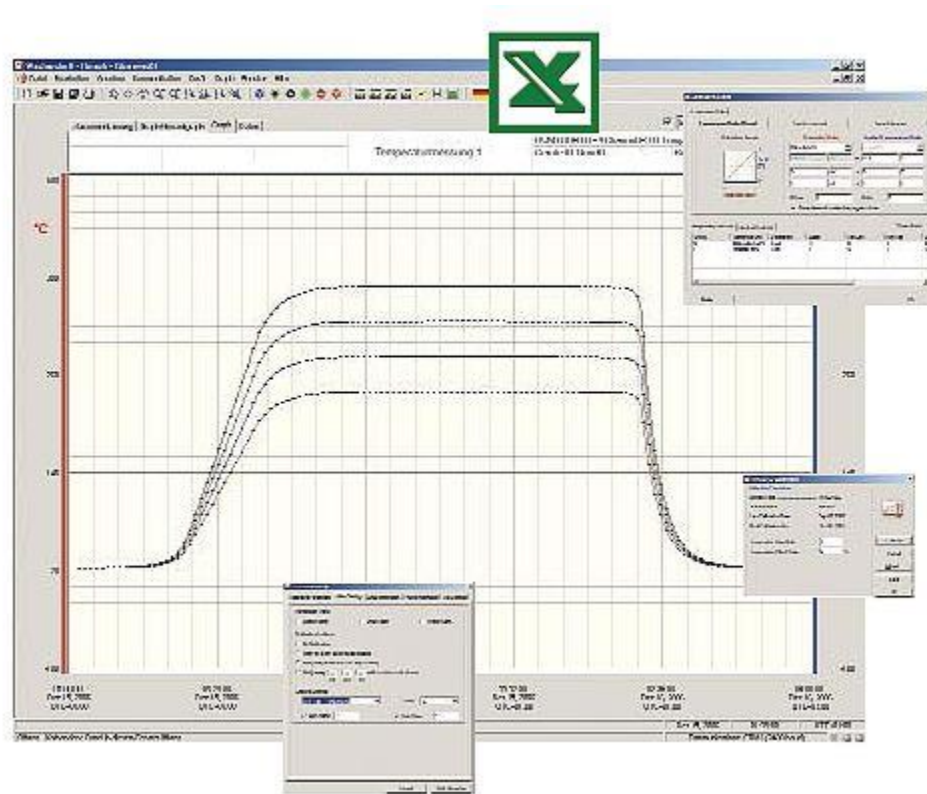
1. Data columns and graphical representation (x-t diagram with date and time), data can be exported to other software such as MS Excel.

2. Real time registration: Presentation of measurement values in real time when values are simultaneously stored.

3. Graphic cursor: With only one click on the graph, the time, measurement value, parameters or the instrument number are displayed.

4. Value Chart: Continuous access to the chart for a detailed presentation of the measurement values.

5. Scale: An automatic scale function allows the automatic display of all the measurement values. It is also possible to change the scale manually.



6. Format: You can individually select colour display, lines and many other parameters.

7. Statistical function: It can produce and represent average value, max/min value, variations, etc.

8. Data export: Data can be exported to different programs. To export data to EXCEL you will only need one click.

9. Interface: The port is automatically detected.

10. Configuration: To adjust measurement quota and starting/shutting down times is very easy.

11. Printing: Values can be printed as a chart or as a graph.

Delivery content:

1 x data logger PCE-T 300, 1 x battery and user manual.

Optional accessories

- ISO calibration certificate

For companies that wish to include this device in their set of internal testing tools or for annual recalibrations. The ISO certificate includes a laboratory calibration and a control document with all the measurement values.



- Software

Software for programming the device, for the reading and filing of measurement values. The software kit includes an interface cable and a CD with the software. Among its additional functions you can find: real time registration, statistical function and data export to Excel.

