



### **Thermometer with Data Logger PCE-T 800**

**Thermometer with data logger with real-time data logger in the SD card, 4.5" LCD display, USB port, software for data transference and analysis**

The thermometer with data logger PCE-T 800 is a device to measure temperature with 8 channels and a 2GB SD card to record data over a period of 3.8 years. The thermometer with data logger PCE-T 800 includes a software which allows you to read the recorded data in the memory card for further analysis. Time intervals can be programmed (one second in every channel). The thermometer with data logger PCE-T 800 can be used as a thermometer to measure temperature in situ. With the thermometer with data logger PCE-T 800 it is possible to perform spontaneous measurements (with or without data logger) or even to program it for further registration of temperature in a specific place. The 4.5" display allows for the graphic representation of current measurement values for an easy analysis of the temperature development. The display simultaneously shows the temperature readings of all eight channels when they have eight sensors connected. The thermometer with data logger PCE-T 800 can be used with 11 different temperature sensors (K, J, E, T, R, S, N, etc). The thermometer with data logger PCE-T 800 has an input to measure and register an analogue source.

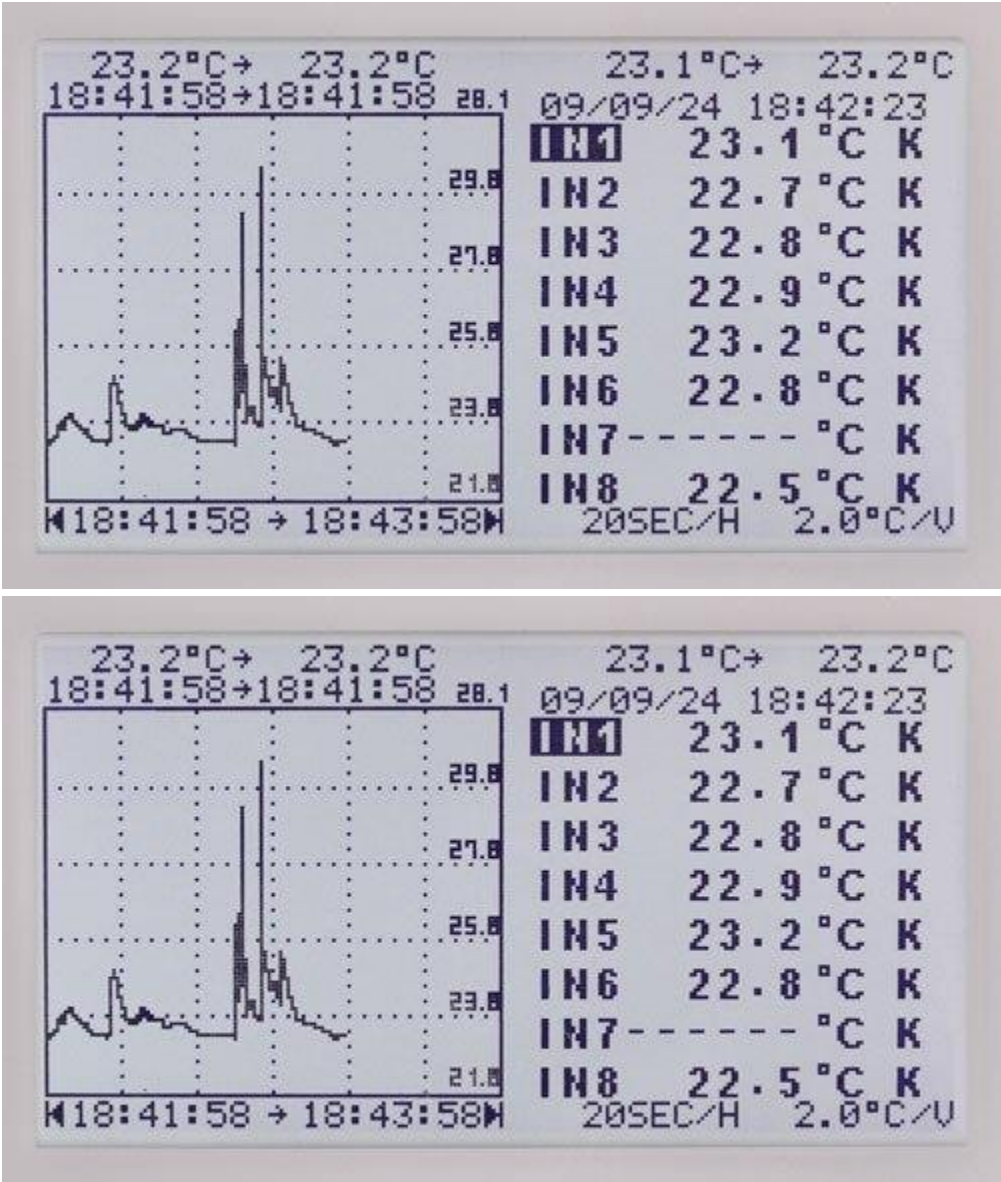


View or print user's manual of the thermometer with data logger PCE-T 800



- Eight channels data logger for temperature (°C / °F)
- 4.5" LCD display (240 x 128 pixels)
- Timer to adjust registration interval
- It can be connected to 11 different temperature sensors (K, J, E, T, R, S, N, etc.)
- Thermal sensor to be connected via miniature plug
- Shows max. and min. values
- Registration of measuring values during 24 h
- 2 GB SD card for data registration over a period of 3.8 years.
- The 8 GH SDHC memory card can be used
- Integrated calendar
- Low battery indication

- Limit value and low alarm in every channel
- Temperature sensors, 2GB SD card and batteries are included in the delivery



**Technical specifications**

Measurement of temperature °C  
 Type K

Measurement range	Accuracy
-200 ... -150 °C	±3.0 °C
-150 ... -100 °C	±2.0 °C
-100 ... 999.9 °C	±0.05 % / ±1.0 °C
1,000 ... 1370 °C	±0.2 % / ±1.0 °C

Measurement of temperature °C  
 Type J

Measurement range	Accuracy
-200 ... -100 °C	±2.5 °C
-100 ... 100 °C	±1.5 °C
100... 760 °C	±0.05 % / ±1.0 °C

Measurement range
 Accuracy

Measurement of temperature °C Type E	-150 ... -100 °C 100 ... 760 °C Measurement range	±2.0 °C ±0.05 % / ±1.0 °C Accuracy
Measurement of temperature °C Type T	-200 ... -150 °C -150 ... -100 °C -100 ... 400 °C Measurement range	±3.0 °C ±0.1 % / ±1.5 °C ±0.1 % / ±1.5 °C Accuracy
Measurement of temperature °C Type R/S	0 ... 100 °C 100 ... 300 °C 300 ... 999,9 °C 1,000 ... 1,600 °C Measurement range	±5.0 °C ±3.0 °C ±0.05 % / ±2.0 °C ±0.1 % / ±2.0 °C Accuracy
Measurement of temperature °C Type N	0 ... 999,9 °C 1,000 ... 1,300 °C Measurement range	±0.1 % / ±1.0 °C ±0.2 % / ±1.0 °C Accuracy
Measurement of temperature °C Type L	-200 ... 900 °C Measurement range	±0.1 % / ±1.0 °C Accuracy
Measurement of temperature °C Type U	0 ... 600 °C Measurement range	±0.1 % / ±1.0 °C Accuracy
Measurement of temperature °C Type B	600 ... 999.9 °C 1,000 ... 1,760 °C Measurement range	±0.05 % / ±2.0 °C ±0.1 % / ±2.0 °C Accuracy
Measurement of temperature °C Type C	0 ... 999.9 °C 1,000 ... 1760 °C Measurement range	±0.1 % / ±1.5 °C ±0.2 % / ±1.5 °C Accuracy
mV	-60 mV ... 60 mV Measurement range	±60 µV Accuracy
Display	4.5" STN LCD (240 X 128 pixels )	
Power	Batteries 8 x 1.5 V AA	DC 12 V mains component/ 300 mA output AC 110 V / 220 V input
Current consumption	100 mA (with backlight) 70 mA (without backlight)	
Dimensions	257 x 155 x 57 mm	
Weight	1160 g ( with batteries )	
Operating conditions	0 °C ... 50 °C / 85% H.r .	
Storing conditions	-20 °C ... 60 °C / 75% H.r .	

**Images of the thermometer with data logger PCE-T 800**







### **Delivery contents**

1 x 8 channels thermometer with data logger PCE-T 800, 7 x type K temperature sensors (1 m / -50 °C ... 200 °C), 1 x temperature sensor (3 m / -50 °C ... 200 °C), 8 x 1.5 V AA batteries, 1 x software, 1 x USB cable, 1 x mains adapter, user's manual, 1 x software and user's manual, 1 x 2GB SD memory card, 1 x carrying case

### **Optional accesories**

Min-connectors for analogue input TF-550

### ISO calibration and certificate

For companies that wish to incorporate the thermometer into their internal quality control system of tools or for annual calibrations. The certification meets [ISO](#) standards and includes a laboratory calibration and a certificate which contains the measurement values. It also includes the company's name and address or the person who ordered the device.



### Type-K temperature sensors / thermo elements

We offer a wide range of type-K temperature sensors for the thermometer with data logger PCE-T 800.

