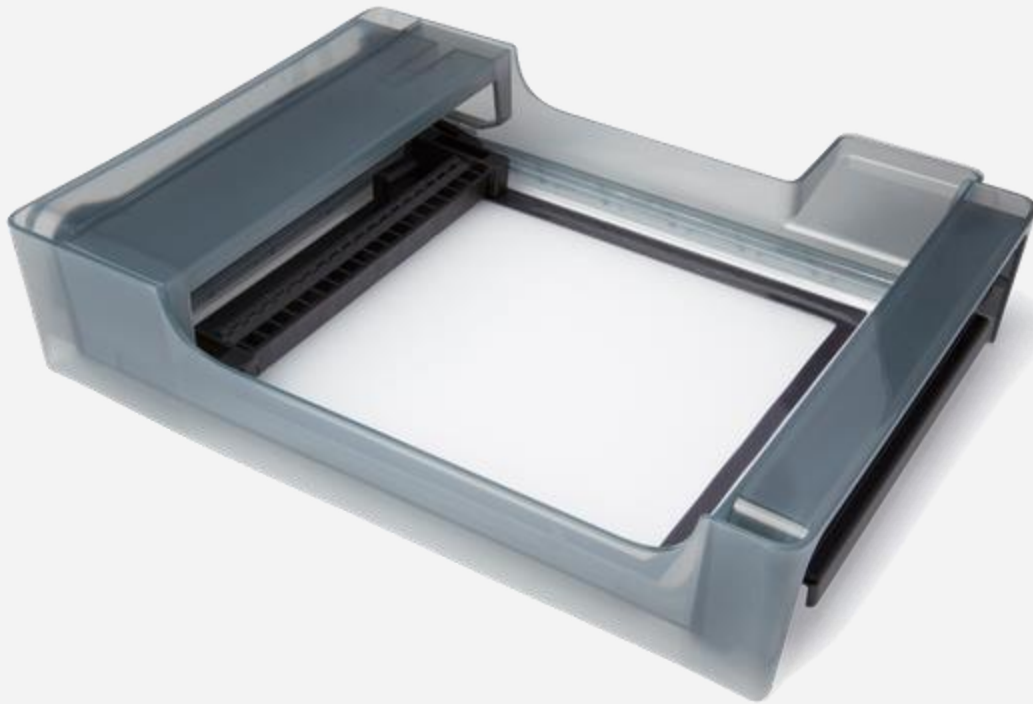




Form 3 Resin Tank

RT-F3-02



Low Force Stereolithography (LFS)[™] 3D printing uses linear illumination and a flexible film tank to turn liquid resin into flawless parts. A key component of the LFS

process, the strong dual-layer film at the bottom of the Form 3 Resin Tank allows for a dynamic and precise print process.

For use with Form 3 and Form 3B.

Notice: There are two versions of the Form 3 Resin Tank: Tank V1 and Tank V2. Form 3 Resin Tank V1 is incompatible with Rigid, Grey Pro, and Elastic Resins. [Read more about tank versions, lifetime, and maintenance in our support article.](#)