



Features

- 5.7 inch, VGA color TET display and LEMO/BNC probe connector
- Wide measurement range from 1-10000 mm
- Precise and stable horizontal and vertical linearity with horizontal linearity 0.1% and vertical linearity 2%
- DAC, AVG, DGS curves and defect echo help to evaluate defect equivalent calculation
- Simultaneous display of high resolution A-scan and B-scan waveform
- Four ways to present waveform: positive half-wave, negative half-wave, full wave and radio frequency.
- Automatic gain adjustment, defect equivalent calculation and peak memory function
- Two individual gates setting and alarming function.
- Gate measurement includes echo amplitude, beam path, depth, projection and so on.
- Waveform freeze available in full, peak, comparative and envelope ways
- 50 detecting channels are available with separate detecting parameters and DAC (Distance Amplitude Correction) curves in every channel.
- Adjustable high performance square wave pulse generator
- Three detecting modes (single-probe, dual crystal probe and transmission) with automatic calibration function
- Connected to PC via USB interface with advanced software for data analysis and management.
- Super large memory, 1000 waveform and 4X2000 frame dynamic waveform diagrams can be stored, with the function of storage, checkout and review of channel, waveform, dynamic records.
- Flaw detection report printable

TIME® 1150

ULTRASONIC FLAW DETECTOR

Technical Specification

Operating temperature	-10℃~+50℃
Storage temperature	-20℃~+60℃
Language	English/Chinese/Spanish selectable
Probe socket	LEMO or BNC
Battery (mAh)	2×3.7V 5000mAh
Battery working time	>8 h
Charging time (h)	<8 h
Power adapter Input:	100-240-50/60Hz
Output:	9V DC/3A~4A
LCD	Color transmission TFT, 640×480
Measuring unit	mm, inch, μs
Scanning range (mm)	0-10000
Sound velocity (m/s)	600-16000
P-delay (μs)	-1.000~750.000
D-delay (μs)	-20~+3400
Test mode	Pulse-echo, dual and through transmission
Scanning mode	A scan and B scan, displaying A scan and B scan simultaneously
Pulse generator	
Pulser (V)	Square pulse
Transmitting voltage	100-400 (V) variable in steps of 10V
Transmitting pulse width (ns)	75, 100-500 variable in steps of 50 ns
Damping(Ω)	50, 100, 200, 500
Pulse repetition frequency (Hz)	10-1000
Receiver	
Gain (dB)	0-110
Bandwidth (MHz)	0.1-15
Rectify	Positive half wave, negative half wave, full and RF
Vertical linearity accuracy	±2%
Amplifier resolution (dB)	±1
Dimension (mm)	177 x 255 x 51
Weight (g)	1200

Reject (%)	Linear, 0~80% of the full screen	Standard Delivery	Quantity
Sampling frequency (MHz)	80	Main unit	1 set
Crosstalk rejection (dB)	≥ 80	Lithium battery	2 packs
Dead zone (μs)	≤10 (related with transmitting)	Power adapter (3A/9V)	1 piece
Dynamic range (dB)	≥40	LEMO-Q9 Probe connecting cable (Q9-Q9 probe connecting cable)	1 piece
Instant resolution (dB)	≥32	LEMO-Q6 Probe connecting cable(Q9-Q6 probe connecting cable)	1 piece
Time base linearity	< ±0.2% full screen	Straight beam probe(φ20 2.5MHz)	1 piece
Sensitivity leavings	≥ 62dB	Angle beam probe(8×9K2 5MHz)	1 piece
Measurements and others		Coupling agent	1 bottle
Gate	2 independence gates	Necklace belt	
Testing position	Edge, Peak value	Wrist belt	1 piece
Gate measurements	Echo amplitude、 Sound path、 depth、 projection etc.	TIME certificate	1 piece
Freeze	Freeze waveform, peak value, comparative and envelope	Warranty card	1 piece
AVG equivalent calculate	Calculate the flaw equivalent according to the flaw echo and AVG curve	Instruction manual	1 piece
DAC flaw evaluating	Make flaw evaluation according to flaw echo and DAC curve		
Gate logic	Off , measurement, gate positive wave alarm, gate negative wave alarm		
Gate alarm	Off、 anytime、 hold for 0.2s、 0.5s、 1s and 2s、 lock		
Alarm	On/off		
Data management, communication and print			
Data storage	50 channels		
Data management	1000 wave images (including 980 A scan images and 20 B scan images)		
	4x2000 dynamic wave image		
	Store, review or replay the channels, waves		
Communication	All the data can be stored to PC or flash disk		
	Communicate with PC via USB interface		
Printing	Print report		
Output port			
USB OTG port	USB2.0 Device connected with PC USB2.0 Host connected with flash disk or printer		



Pipe Inner Wall Flaw Detector



Mechanical Part Flaw Detector



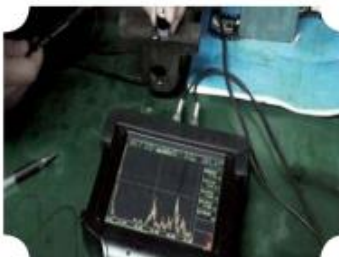
Slim Bar Flaw Detector (Valve)



Pipe Hole Flaw Detector



Weld Flaw Detector



Casting Flaw Detector



TOFD Application



Phased Array Application