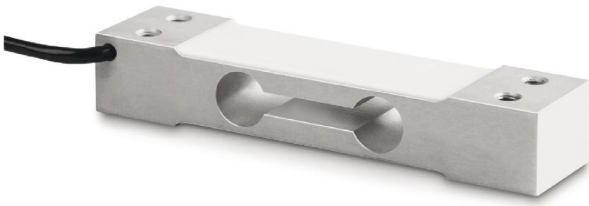


# KERN CP40-3P1

Single-point load cells made of anodised aluminium



## Measuring system

|                                    |         |
|------------------------------------|---------|
| Combined Error:                    | 0,023 % |
| Load cell connection:              | 4-wire  |
| Nominal sensitivity:               | 2       |
| OIML class:                        | C3      |
| Resolution Load cell â Verifiable: | 3000 e  |
| Weighing capacity [Max]:           | 40 kg   |
| Y value:                           | 10000   |

## Environmental conditions

|                                |        |
|--------------------------------|--------|
| Maximum operating temperature: | 65 °C  |
| Maximum operating temperature: | 40 °C  |
| Minimum ambient temperature:   | -35 °C |
| Minimum operating temperature: | -10 °C |

## Category

|        |        |
|--------|--------|
| Brand: | Sauter |
|--------|--------|

## Packaging & shipping

|                               |                   |
|-------------------------------|-------------------|
| Delivery:                     | 24 h              |
| Dimensions packaging (WxDxH): | 165 x 100 x 45 mm |
| Gross weight:                 | 229 g             |
| Net weight:                   | 187 g             |
| Shipping method:              | Parcel service    |

## Construction

|                                       |                  |
|---------------------------------------|------------------|
| Cable length:                         | 40 cm            |
| Dimensions (WxDxH):                   | 130 x 30 x 22 mm |
| Dimensions of weighing plate (WxDxH): | 250 x 350 x 0 mm |