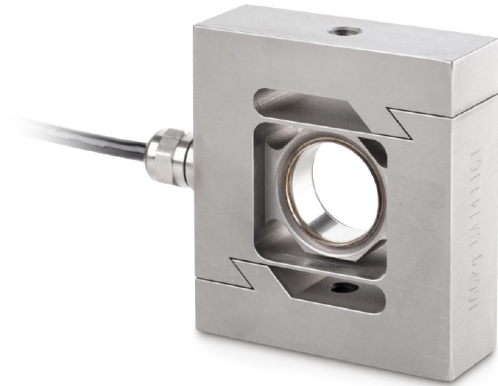


# KERN CS500-3P2

S measuring cells and S load cells made from stainless steel



## Measuring system

Combined Error:	0,023 %
Load cell connection:	4-wire
Nominal sensitivity:	2
OIML class:	C3
Resolution Load cell â Verifiable:	3000 e
Weighing capacity [Max]:	500 kg
Y value:	12000

## Environmental conditions

Maximum operating temperature:	65 °C
Maximum operating temperature:	40 °C
Minimum ambient temperature:	-35 °C
Minimum operating temperature:	-10 °C

## Category

Brand:	Sauter
--------	--------

## Packaging & shipping

Delivery:	24 h
Dimensions packaging (WxDxH):	205 x 170 x 60 mm
Gross weight:	1,460 kg
Net weight:	1,360 kg
Shipping method:	Parcel service

## Construction

Cable length:	6 m
Dimensions (WxDxH):	92 x 86 x 50 mm