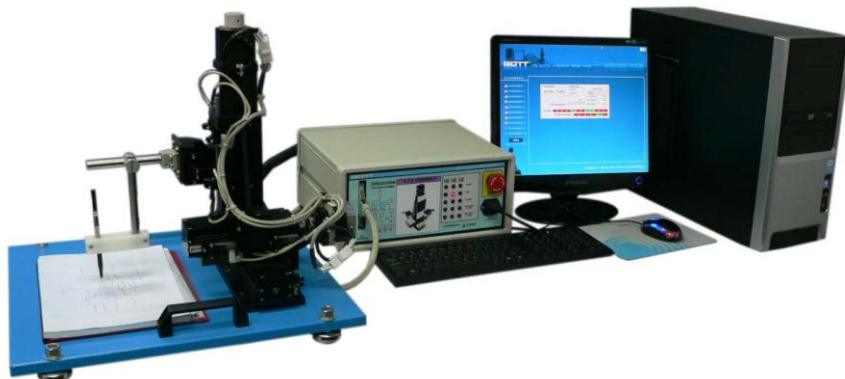


3 AXIS CARTESIAN ROBOT

Model Number : GOTT-ROBOT-219



POWERED BY :  **ADLINK**
TECHNOLOGY INC.

DESCRIPTION

A new series of robots from GOTT features high speed precision motor controlled XYZ motion. They can be used for dispensing, soldering, inspection, automatic screw fastening and pick & place operations.

These systems are configured using Axis table Cartesian series of Screw Driven Slides and PC based Control Package. Robots can be configured up to 85x50mm of travel with maximum speeds to 600mm per second. This gives the user a large format. Each axis is built with robust aluminum housing with a protective top cover. This allows the robots to stand up to education and industrial applications.

Three Axis of simultaneous motion can be provided to perform difficult multi-Axis motions. GOTT™'s Cartesian Robots also provide smooth and continuous motion. The system can be mounted over large parts or conveyor systems. This gives the unit great flexibility in its applications. An optional library of motion routine is available for software development for OEM applications. Integration with other mechatronics trainer makes easy use as a pick and place system application.

PRODUCT SPECIFICATION

Working Area	50mm x 85mm
Operating Range	X arm/±90° Horizontal, Y arm/± 90° Vertical, Z axis/50mm
Arm Length	X arm 85mm, Y arm 50mm
Max Load	5 kg
Maximum Speed X & Y	600mm/sec (1 kg load) 300mm/sec (3 kg load) 100mm/sec (5 kg load)
Maximum Speed Z Arm	Z = 320mm/sec
Repeatability	X/Y ± 0.02mm per axis, Z ± 0.02mm
Data Memory Capacity	100 programs, 6000 points
Drive System	2-phase stepping motor
Operation System	Point to point and continuous path
Interpolation	XYZ simultaneous 3D linear interpolation
Teaching Method	Manual data Input (MDI) teaching
Control	PC Based Motion Control
External Interface	RS232C
Power Supply 240V	AC 180-250V consumption 200VA
Working Temperature	10 - 65°C
Relative Humidity	20-95% no condensation
Weight	22.55 lbs (10.25kg)

FEATURES

- PC Based control
- Support high level programming language
- Capable work as stand-alone or integration with other trainer
- Windows based platform
- Heavy-duty robust fabrication.
- Three to four axis models expandable

GENERAL SPECIFICATION

Applications	Education, training, research
Configuration	3 Axis guide table All Axis can be controlled simultaneously
Drives	3 PMDC Stepper motors with integral controller
Controller	PC Base controller
Language support for PC	Visual Basic & C++

3 AXIS CARTESIAN ROBOT

Model Number : GOTT-ROBOT-219

EXPERIMENT TOPICS

SOFTWARE EXPERIMENT SCREEN

Types of single axis and linear interpolation experiments :



Position control by various types of velocity profiles

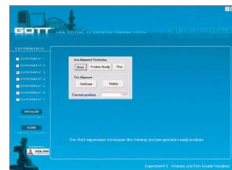


Multiple Axis synchronized motion



Homing and pen ready routines

Types of application experiments :



Geometrical shape plotting



Character and word plotting



User customized character and word plotting



Boxes ticking routine

A complete system specification includes

- 3 axis robot with travel of 85x50x50mm completely assembled
- PCI motion controller for the PC
- Power electronics assembled in enclosure panel with power supply
- Multiple I/O ports for machinery, conveyor, or PLC integration
- Arm length of X=85mm, Y=50mm, Z=50mm
- Allows customized secondary rotation of parts

With this enclosure panel, it will meet your educational requirement.



Enclosure Panel

Manuals :

- (1) All manuals are written in English.
- (2) Model Answer
- (3) Teaching Manuals

General Terms :

- (1) Accessories will be provided where applicable.
- (2) Manual & Training will be provided where applicable.
- (3) Design & specifications are subject to change without notice.
- (4) We reserve the right to discontinue the manufacturing of any product.

Warranty :

2 Year

ORDERING INFORMATION :

ITEM	MODEL NUMBER	CODE
3 AXIS CARTESIAN ROBOT	GOTT-ROBOT-219	964-110

*Proposed design only, subject to changes without any notice.