



Think3D

Professional 3D Scanner Manufacturer for **10** Years

Think3D





Production info

Light range	100*80 mm
Scan volume	10-150 cm
Resolution	0.15 mm
Single frame accuracy	0.01 mm
Scan speed	3.3s/scan
Interface	USB 2.0; C++
Sensor	CMOS, 1.31mp * 2
Raster	1280*1080Led
Scan mode	Auto scan
System require	RAM>8GB; Nvidia GM>2GB; Win7(64bit)+
Certification	CE/FCC/WEEE/CNAS
Export format	STL/AC
EXOCAD	Charged

The development of Dental t series

t100



t200



t300



60*40cm

47*32cm

38.3*26.4cm

The details of t300



Packing info

Packing List:

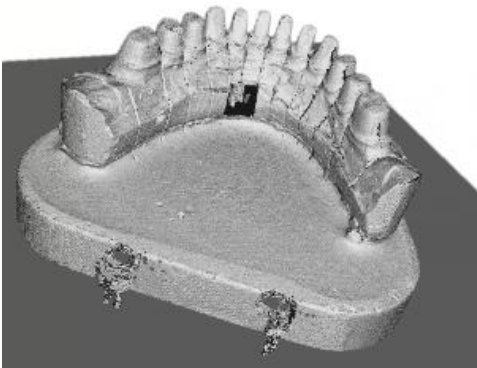
1. Scanner;
2. Cables;
3. Die (12 positions);
4. Holder;
5. Calibration plate;



From object



Point cloud



to

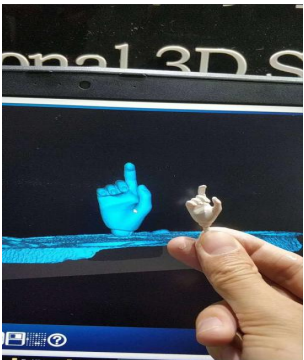


STL data

Cases in Dental t300

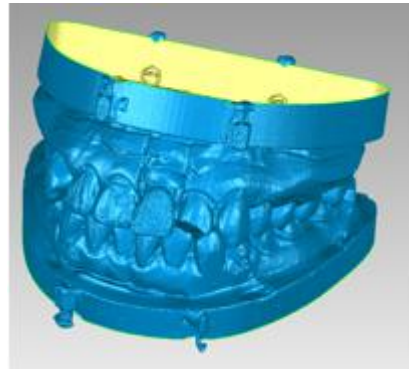


0.01mm accuracy

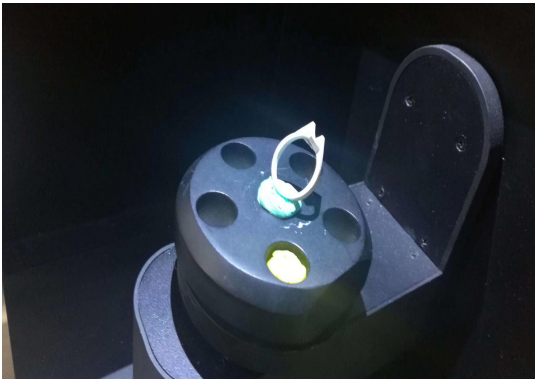


1280*1080LED

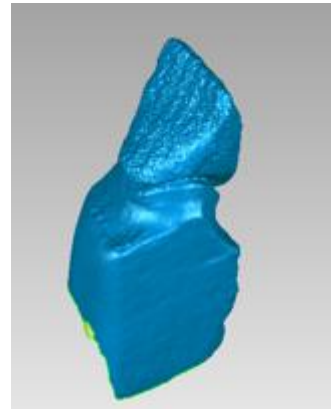
Bite scan /registered jaw



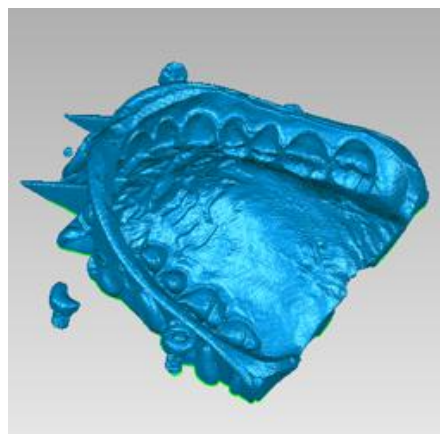
Item scan



Die scan



Impression scan



FAQ

? OEM is ok ?

Yes ,MOQ 10 .

?what is the size of the object can scan ?

Suggest more than 1cm

?How long is the warranty ?

2 years