

KNX TRAINING SYSTEM COME WITH COMPUTER SOFTWARE AND LICENSE

Model Number : GOTT-KNX-P01











DESCRIPTION

These benches are made up of a set of KNX modules adapted for training purposes. They are designed for controlling functions such as lighting, heating, blinds and sockets in commercial buildings.




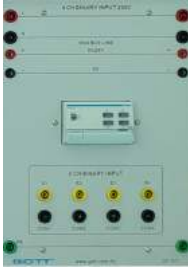







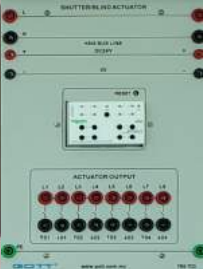
The KNX Training System solution is a standard familiarization package for the most common functions and can be used to highlight how much easier it is to set up compared to traditional wiring. This trainer can be complemented by actual operative parts such as the roller blind offered and etc.

Training Package : KNX Installation Bus System

MOTION DETECTOR	CODE 785-708	SYSTEM LINE COUPLER	CODE 201-405	DUAL CONTROL SWITCH	CODE 785-704	HALOGEN DOWNLIGHT	CODE 588-045
<ul style="list-style-type: none"> Operation timer period from 1s-8min Light threshold(light-sensitive switch) Detection Angle : 180 degree Sensing Distance: 8 meter Light Sensor : continuously adjustable from 5 to 1000 lux 		<ul style="list-style-type: none"> Used for the logical linking and galvanic separation of line and domain In coupler mode the component is wired in parallel on the bus and creates a new line (or zone) to separate the main line and the subline In repeater mode, the coupler reacts as extender to component line 		<ul style="list-style-type: none"> Keys can be configured as pairs of (Up and Down) and on/off switch Individual function programming Indication LED Variable control Sequences Blind control 		<ul style="list-style-type: none"> Rated input Voltage : 230 VAC Lamp with individual 4mm input socket 	
							
TOUCH SENSITIVE MULTIFUNCTION	CODE 785-707	4 GANG PUSH BUTTON AND IR	CODE 785-705	2 GANG PUSH BUTTON	CODE 785-706	SINGLE PHASE AC POWER SUPPLY	CODE 967-004
<ul style="list-style-type: none"> Glass surface with touch sensitive Selector switch Variable Control (Paired or single) Blind control (Paired or single) Edge triggering data packet :1-8bits Edge with 2 byte data packets 8 bit sliding controller Sequence storage and recall Scene & interlock function 		<ul style="list-style-type: none"> Switch with short and long press with bounce free contact Selector switch Variable Control (Paired or single) Blind control (Paired or single) Edge triggering data packet :1-8bits Edge with 2 byte data packets 8 bit sliding controller Sequence storage and recall Scene & interlock function Programmable IR Transmitter remote 		<ul style="list-style-type: none"> Switch with short and long press with bounce -free contact Built in display panel and internal temperature sensor Variable Control (Paired or single) Blind control (Paired or single) Edge triggering data packet :1-8bits Edge with 2 byte data packets 8 bit sliding controller Sequence storage and recall Scene & interlock function 		<ul style="list-style-type: none"> Input voltage: AC220-240V FCCB 2 Pole 16A RCCB 2 pole 25A 	
							





KNX TRAINING SYSTEM COME WITH COMPUTER SOFTWARE AND LICENSE

Model Number : GOTT-KNX-P01

EMERGENCY SWITCH CODE 776-007 <p>Rated voltage : 230VAC Emergency off button with pull-unlatching</p> 	INCANDESCENT LAMP CODE 588-039 <ul style="list-style-type: none"> Rated Voltage: 230VAC 	8 CHANNEL SWITCH ACTUATOR CODE 201-402 <ul style="list-style-type: none"> Rated voltage: 230VAC Rated current: 16A (cos=0.6) Rated power <ul style="list-style-type: none"> - 230VAC incandescent lamps :3600W - 230VAC halogen lamps: 2500W - 230VAC flourescent lamps: 2500W 	4 CHANNEL BINARY INPUT 230V CODE 201-411 <ul style="list-style-type: none"> Input Voltage: 230VAC Touch current: 12mA Low set point : 140V High set point: 160V 
BUS POWER SUPPLY 640MA CODE 201-401 <ul style="list-style-type: none"> Protection : Short-circuit proof Operational voltage: 110-230V Network Frequency: 50-60 Hz Output Current: 640mA 	PRESENT SENSOR DETECTOR CODE 785-709 <ul style="list-style-type: none"> Light threshold adjustment Up to 3 function triggered on detection Information Feedback Detection Angle 360 Degree Sensing Distance: 10 to 13 meter Light sensor : continuously adjustable from 5-1000 lux)approx 	SELV BINARY INPUT 4 CHANNEL CODE 785-710 <ul style="list-style-type: none"> Input Voltage: < 3V (SELV) for each Input/output Touch current: < 0.5 mA Output current: 2mA max. Panel base with 2 switches and 2 toggle switch 	DALI GATEWAY CODE 785-711 <ul style="list-style-type: none"> Input Voltage : 230VAC Signal Control +/- 64 output control Dimming , switching and absolute count function A4 Panel Base with DIN Rail mounted 2mm banana socket for KNX Bus 
4 CHANNEL DIMMING ACTUATOR CODE 201-404 <ul style="list-style-type: none"> Rated Voltage: 230VAC Rated power: min 500W/VA Resistive loads : > 30W Capacitive loads: 50W/VA 	DC POWER SUPPLY CODE 955-124 <ul style="list-style-type: none"> Input voltage: AC220-240V Output Voltage: <ul style="list-style-type: none"> +24VDC/2A +12VDC/7A +5VDC/7A 	USB INTERFACE CODE 201-406 <ul style="list-style-type: none"> Compatibility : USB 1.1 or 2.0 A4 Panel base with DIN Rail mounted 	SHUTTER/BLIND ACTUATOR CODE 785-703 <ul style="list-style-type: none"> Input Voltage: 230VAC Touch current: 10A (cos=0.6) Motor Load : 230 VAC , 1000F A4 Panel Base with DIN Rail mounted 

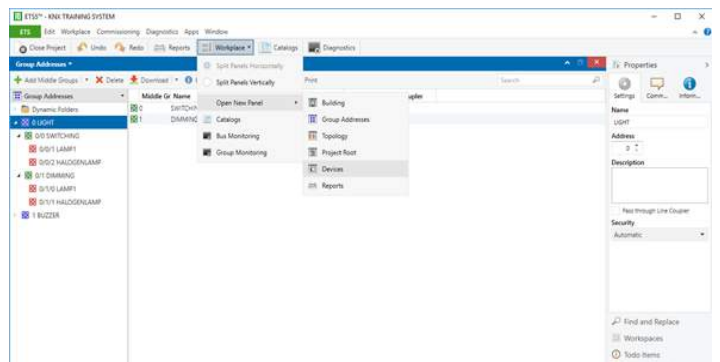
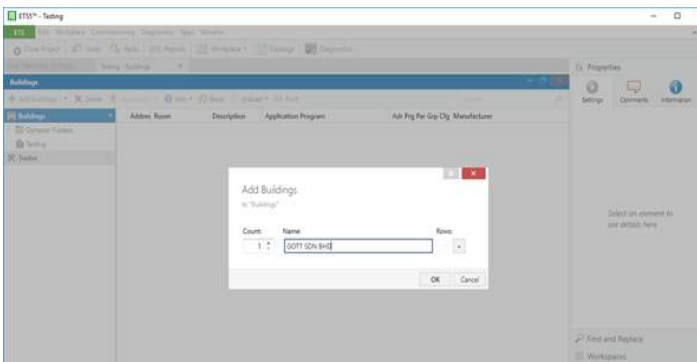
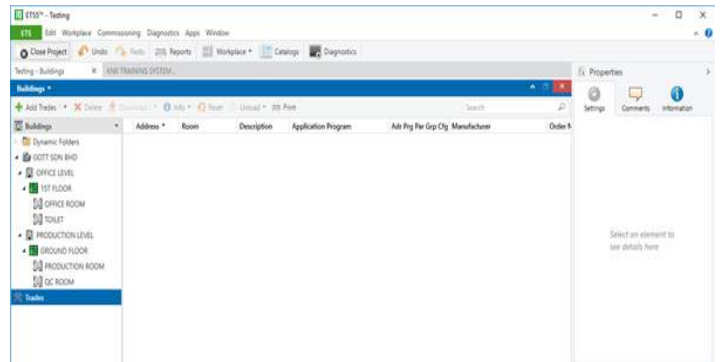
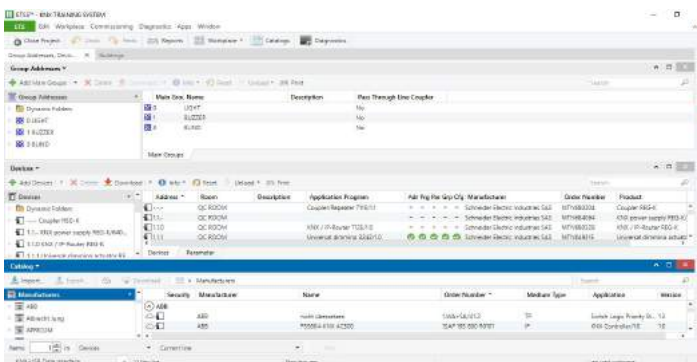
KNX TRAINING SYSTEM COME WITH COMPUTER SOFTWARE AND LICENSE

Model Number : GOTT-KNX-P01

WEATHER STATION CODE 785-712	SERVA HOME SERVER CODE 785-714	PROGRAMMING TIMER CODE 588-010	INDICATOR AND BUZZER CODE 191-130
<ul style="list-style-type: none"> Auxiliary voltage: AC 24 V (+/-10 %) Analogue inputs: 4 Current interface: 0 -20 mA, 4 -20 mA Voltage interface: 0 ... 1 V, 0 ... 10 V 	<ul style="list-style-type: none"> Supply voltage: DC 12-30 V (at DC 24V 40 mA), AC 12-24 V Device width: 2 modules = approx. 36 mm 	<ul style="list-style-type: none"> Large program memory back up Automatic daylight and saving time Operational Accuracy: <+ 1s/day Program Memory Back-up:1.5 Years 	<ul style="list-style-type: none"> Rated Voltage: 230VAC
			

WORKING RANGE





SOFTWARE AND LICENSE INTERFACE



* Proposed design only, subject to changes without any notice.

KNX TRAINING SYSTEM COME WITH COMPUTER SOFTWARE AND LICENSE

Model Number : GOTT-KNX-P01

U-LINK	CODE 159-019	SAFETY CONNECTING LEAD	CODE 237-001	VERTICAL FRAME	CODE 297-000	EXPERIMENT MANUAL	CODE 146-035
For connecting junction point		4mm connecting leads		High level : DIN standard A4 with two shelves Material: Aluminium Side Frame: T shape Size: 3-Layer 1450mm Length			
							

EXPERIMENT TOPICS

- Installing The Ets5 Lite for Knx Project
- Create New Knx Project
- Create A Building Structure
- Putting The Product Catalog Into Your Building Structure
- Assign Physical Address To Participants
- Installation Of Knx Device
- Link Participants In The Same Group Address
- To Execute Program Application
- To Control Incandescent Lamp by Using Dimming and Touch Actuator and Touch Sensitive Multifunction
- To Control Halogen Lamp by Using Dimming Actuator, Dual Control Switch and 2 Gang Push Button
- Using Motion Detector and Switch Actuator to Control Buzzer
- Using Present Sensor Detector and Switch Actuator to Control Lamp
- Using 4CH Binary Input 230V, Switch Actuator and Conventional Switch 4-Fold to Control Lamp

Manuals:

- (1) All manuals are written in English
- (2) Model Answer
- (3) Teaching Manuals

General Terms:

- (1) Accessories will be provided where applicable.
- (2) Manuals & Training will be provided where applicable.
- (3) Designs & Specifications are subject to change without notice.
- (4) We reserve the right to discontinue the manufacturing of any product.

Warranty:

2 Years

ORDERING INFORMATION :

ITEM	MODEL NUMBER	CODE
KNX TRAINING SYSTEM COME WITH COMPUTER SOFTWARE AND LICENSE	GOTT-KNX-TCSL1	785-764

* Proposed design only, subject to changes without any notice.