

DAIHAN® Portable Gel Documentation System "WGD-20", 1.45M Pixel CCD Camera, with Certi. & Traceability

With Digital CCD Camera & Optical Lens, Portable Darkroom Hood, Capture Software, USB Interface
 젤이미지 분석 시스템, 고성능/최저가, 디지털 CCD 카메라(145만 화소) 장착



- CE Certified
- PL(Product Liability) Insurance
- with Certificate & Traceability : Controlled by Serial Number, Certificate, Delivery-information, and Traceable Data Base System
- The Most Cost-Effective System
- High Precise and Large Caliber Optical Lens with Zoom, Focus and Iris Control are Used

- * DNA, RNA gel Imaging Capture and Analysis
- * Digital CCD Camera (Resolution 1.45 Million pixel) with Portable Darkroom is Offered
- * 1360 × 1024, 10-bit CCD, Available for 8-bit Gray Level Image Capturing
- * Power Consumption : Supplied USB(USB 3.0)
- * Very Compact Portable Darkroom System Enables the Existing Transilluminators in the Lab to be used together with this system. High Flexibility in use is Offered
- * USB 3.0 Interface is available, through which Real-Time Images are transferred directly to PC
- * Software : Easy and Fast Capture of Gel Image
- * TotalLab™ Software : Fully Automatic, Single Button Press Complete Image Analysis in Interesting Area(Optional)

Specifications & Ordering information

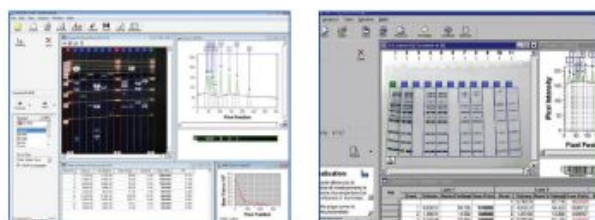
Spec.		Model	"WGD-20"	"WGD-20S" Included DNA Analysis S/W
CCD Module	CCD & Pixel Size		1/2" CCD, 4.65 × 4.65 um	
	Max. Resolution		1,360 × 1,024	
	Lens Mount & Optical Size		C mount, 7.6 × 6.2 mm	
	Connect to PC & Power		USB 3.0, Supplied USB	
Zoom Lens	Iris & Focal Length		F1.0 - Close, 8~48mm	
	Ambient Temp.		-10℃ to +50℃	
Overall	Dimension & Weight		300 × 260 × h470 mm, 9 kg	
	Software Capability		Windows XP, Vista & 7, 8, 10	
Included Standard S/W			Included MaXidoc™ Gel Imaging Capture Software	
Included DNA Analysis S/W			none	TotalLab™ CLIQS
Packing Size & Weight			400 × 350 × h510 mm, 18 kg	
Cat. No.			DH.WGD00020	DH.WGD00024
Price, Each. ₩				

* Other Specifications are available upon Customer's Request.

※ 운임 약 ₩ 9,000 별도!

※ Computer System Requirements

- Intel Chipset, USB 2.0 Support Mainboard
- Over Pentium 4 Processor
- Over 256MB Main Memory
- Over 60MB Space of HDD for Installation and Running
- Window XP, Vista & 7, 8, 10



MaXidoc™ Imaging Capture S/W

: Included S/W, Real-Time Image Viewing/Capture, Manipulate and Save Images



(1) UV Transilluminator(Optional)

Optional Transilluminator & S/W

DH.WUV00020	(1) Transilluminator, "WUV-L20", 20 × 20cm Filter 312nm, 15W UV Lamp × 6ea
DH.WUV00050	(1) Transilluminator, "WUV-L50", 20 × 20cm Filter 365nm + 312nm, 15W UV Lamp × 6ea
DH.WUV00120	(1) Transilluminator, "WUV-M20", 20 × 20cm Filter 312nm, 8W UV Lamp × 6ea
DH.WGD00100	(2) DNA/Protein Analysis S/W, TotalLab™ CLIQS
DH.WGD00121	(3) , CLIQS 1D Pro
DH.WGD00200	LapTop Computer, WGD-Laptop, for WGD Gel Doc.System

Ea. Price, ₩

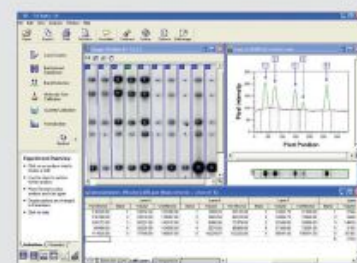
DNA Analysis S/W

(2) TotalLab™ CLIQS

- Automatic and Manual Lane Detection, Background Subtraction
- Fully Automatic Band Detection, Molecular Size / pI Calibration
- Quantity Calibration, Normalization

(3) CLIQS 1D Pro (additional function)

- Match Band Data Patterns across Large Groups of Lanes
- Choice of Algorithms to Generate Dendrograms : NeighborJoining, UPGMA, Complete Linkage, Single Linkage, Ward Library, Queries Function



One Stop Analysis