

DAIHAN® Gel Imaging System "MaXidoc™ G2", Built-in Transilluminator, 1.45M Pixel, 4.65 μ m, F1.0, 8~48mm Manual Zoom
 With Capture Software, High-quality CCD Camera & Optical Lens, Auto Control System, USB Connection, Certi. & Traceability
 이미지 분석 시스템, 자외선 발산기 일체형, 디지털 CCD 카메라(145만 화소) 장착



2-Year Warranty

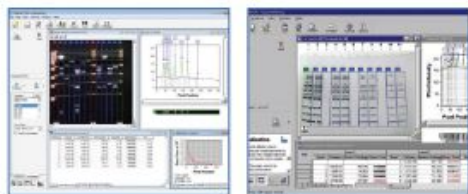
"MaXidoc™ G2" Gel Imaging System, Built-in Transilluminator

- **PL(Product Liability) Insurance**
- **with Certificate & Traceability : Controlled by Serial Number, Certificate, Delivery-information, and Traceable Data Base System.**
- **Complete System with 1.45M Pixel Digital CCD Camera, Safety Darkroom Hood and Built-in Transilluminator(UV Type or LED Type)**
- **High-quality F1.0 Optical Lens with 8~48mm Manual Zoom, Focus and Iris Control is Used.**
- **Included Maxidoc™ Gel Imaging Capture Software.**
- * Ideal for Various Applications of DNA, RNA Protein Gel Imaging Capture and Analysis.
- * Unified Darkroom System with Built-in Sliding Transilluminator offers very safety and convenience in use
- * Built-in Single Wave Transilluminator(UV Type) : 312nm, 6×8W UV Lamps and ETI White LED×3Ea
- * Built-in Single Wave Transilluminator(LED Type) : 470nm, Blue LED×324Ea, 35W
- * 1360×1024 CCD Resolution * Can be Used with Tablet PC(Optional)
- * USB 2.0 Interface is Available through Which Real-time Images are Transferred Directly to PC

Specifications & Ordering information

Spec.	Model	"MaXidoc™ G2"	
Transilluminator Type		Standard UV Type	Blue LED Type
Camera Resolution		1.45 Mega Pixel CCD	
Pixel Size		4.65 μ m	
Lens		F1.0 Fixed, 8~48mm Manual Zoom	
Transilluminator		312nm, 6×8W UV Lamps, Filter Size : 210×260mm	470nm, Blue LED×324Ea, Filter Size : 210×260mm
Software		Included MaXidoc™ Gel Imaging Capture Software	
White Light		3×LED Lamps	
PC Interface(OS)		Window7 or Window10 64bit	
Camera Interface		USB 2.0	
Dimension & Weight		360×380×h700 mm, 24 kg	
Packing Size (mm) & Gross Weight (kg)		430×490×h830 mm, 28 kg	
Electric Reqts.		1 Phase, AC 120V, 60Hz or AC 230V, 50/60Hz	
Cat. No.	230V	DH.WGD00300	DH.WGD00310
	120V	DH.WGD00301	DH.WGD00311
Price, Each. ₩			

* Other Specifications are available upon Customer's Request.



MaXidoc™ Imaging Capture S/W

: Included S/W, Real-Time Image Viewing/Capture, Manipulate and Save Images



- Sturdy Camera Bracket
- F1.0, 8~48mm Manual Lens
- Enterfilter

Optional Software · Transilluminator · White Light Table

- DH.WGD00100 (1) DNA/Protein Analysis S/W, TotalLab™ CLIQS
- DH.WGD00121 (2) , CLIQS 1D Pro
- DH.WUV01110 UV Lamp, 365nm, 8W
- DH.WUV02110 , 312nm, 8W

Ea.	Price, ₩

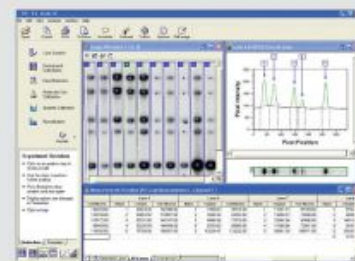
DNA Analysis S/W

(1) TotalLab™ CLIQS

- Automatic and Manual Lane Detection, Background Subtraction
- Fully Automatic Band Detection, Molecular Size / pI Calibration
- Quantity Calibration, Normalization

(2) CLIQS 1D Pro (additional function)

- Match Band Data Patterns across Large Groups of Lanes
- Choice of Algorithms to Generate Dendrograms : NeighborJoining, UPGMA, Complete Linkage, Single Linkage, Ward Library, Queries Function



One Stop Analysis