

PosiSoft Software

EMIN
Testing & Measuring Everything

Overview

PosiSoft Desktop

Powerful desktop software for downloading, viewing, printing and storing measurement data. No internet connection required.

- Simple, intuitive user interface
- Import readings directly from the gage via USB or from legacy PosiSoft desktop versions
- Synchronize measurement data including readings, notes and pictures to and from PosiSoft.net



PosiSoft.net

The intuitive and familiar user interface of PosiSoft Desktop brought to your web browser. Data is securely stored in the cloud.

PosiTector App

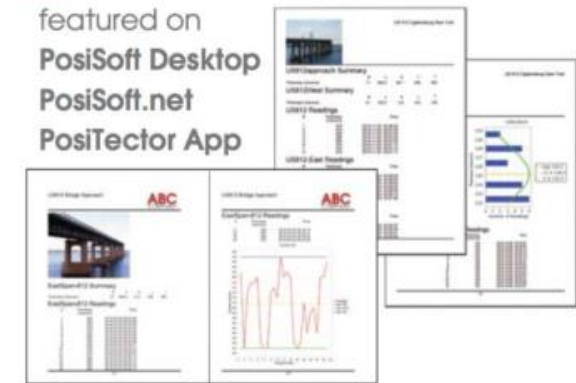
An easy-to-use mobile app (iOS/Android) that connects to your PosiTector Advanced, PosiTector Smartlink, or PosiTest AT.

PosiSoft USB

A simple gage interface to retrieve data in a manner similar to a flash drive. No software to install or internet connection required.

PosiSoft Custom PDF Report Generator

featured on
PosiSoft Desktop
PosiSoft.net
PosiTector App

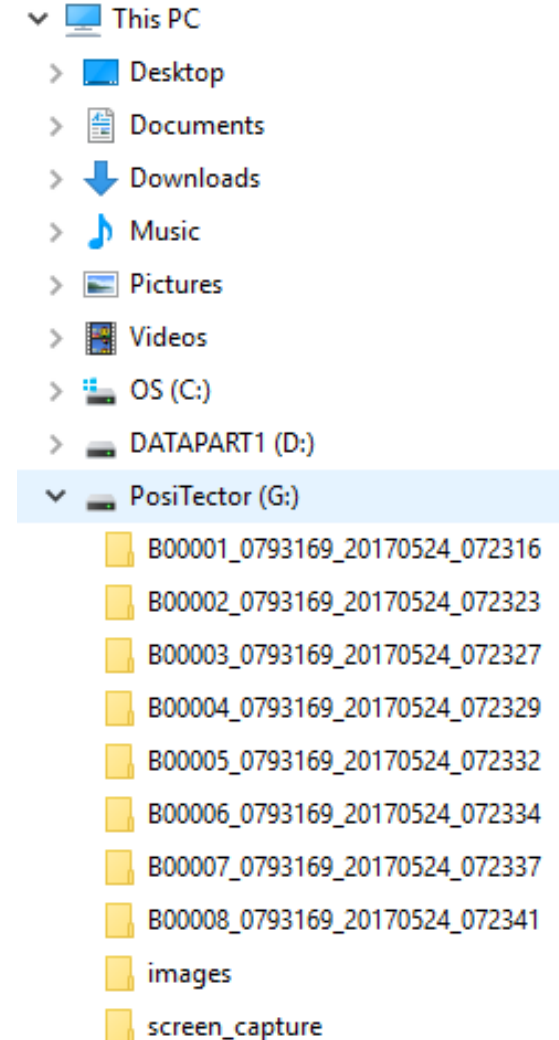


Easily create reports from your measurement data in seconds

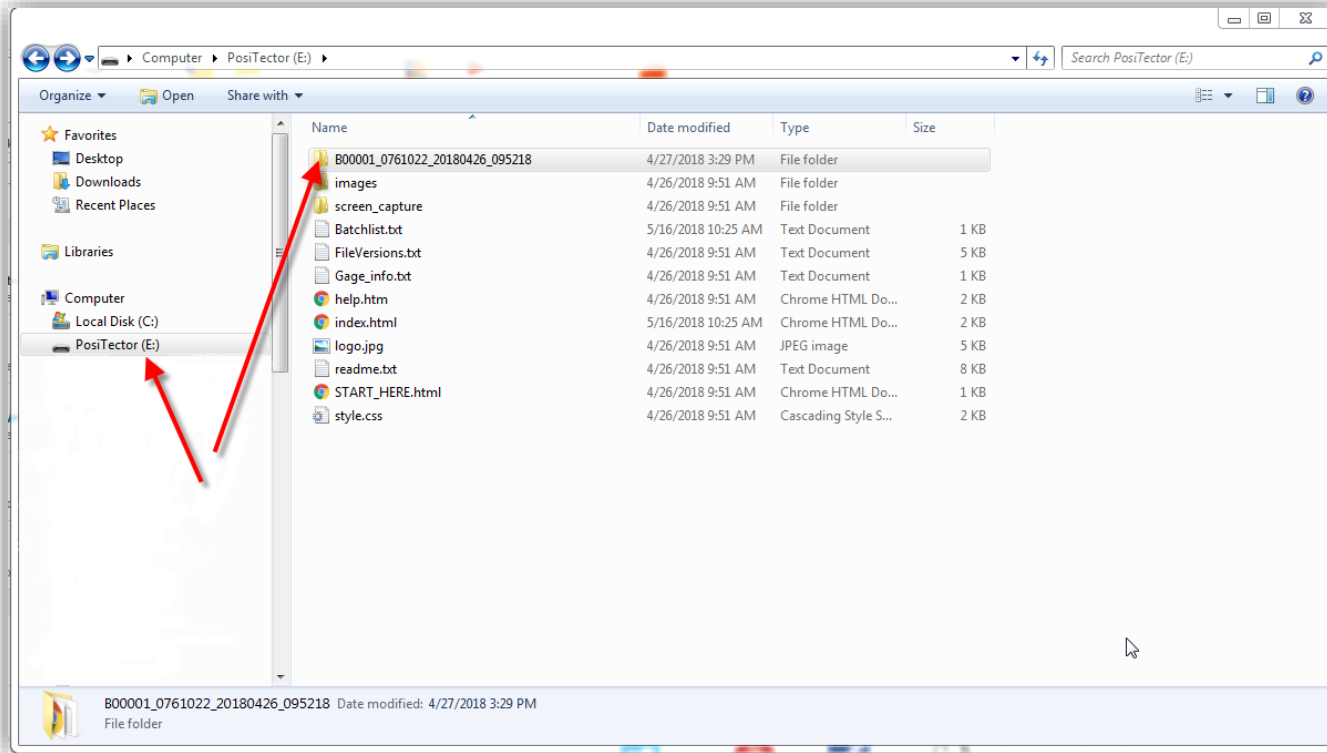
- Generate custom, professional PDF reports
- Include inspection information such as on-site pictures, screen captures, notes and more to communicate important details
- Create and save multiple custom layouts as templates – insert cover pages, add logos/images, and select font and point size
- Select the information to include for each product type – charts, histograms, readings, time stamps and more
- Compile multi-batch reports from one or more probes and instrument types

PosiSoft USB

- Similar to a flash drive or digital camera
- No software to install or internet connection required
- Comma-separated text files for easy import to spreadsheets
- Pre-formatted HTML reports- view and print from any web browser
- View screen captures



PosiSoft USB



Batch B11

B11 Information

Created: 2017-05-24 08:11:35
Gage S/N: 793169
Probe Type: FN
Probe S/N: 273415
CAL: Cal 1

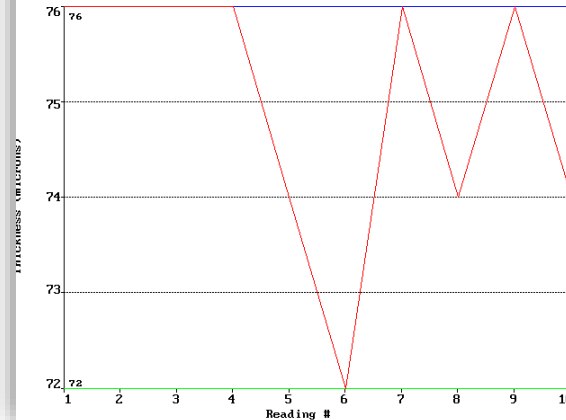
B11 Summary

#	X	σ	μ	σ
10	75.0	1.4	72	76

B11 Readings

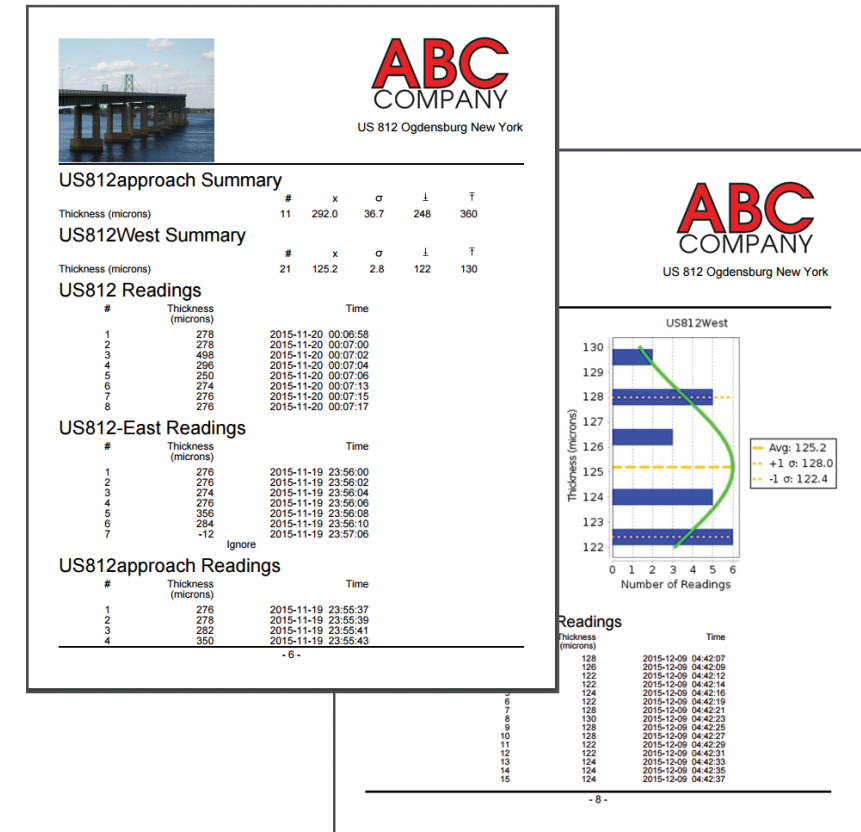
#	Reading	Time
1	76 microns	2017-05-24 08:11:38
2	76 microns	08:11:39
3	76 microns	08:11:40
4	76 microns	08:11:40
5	74 microns	08:11:41
6	72 microns	08:11:42
7	76 microns	08:11:42
8	74 microns	08:11:43
9	76 microns	08:11:44
10	74 microns	08:11:45

B11 Chart



PosiSoft Desktop

- Stores measurement data on your PC or Mac for viewing, sharing, analyzing, and reporting
- Import readings directly from the gage via USB or from legacy PosiSoft desktop versions
- Jobs feature consolidates batches into groups to keep measurement data organized and to quickly create multi-batch reports
- Create customized, professional PDF reports- use the configuration feature to fit the reports to your needs
- New- Integration with PosiSoft.net. View readings uploaded via WiFi, and archive downloaded readings to the cloud



PosiSoft Desktop

PosiSoft Desktop

File Edit View Import Export Configure Help

Jobs New Edit Delete

Batches Edit Remove Include/Exclude

Readings Edit Ignore

Preview Refresh Auto-Refresh Report Template: BridgeCo 2016 Edit New Save Print

Jobs

Name
View All Batches
US812
Delencort
CCT
CR-27

Batches


Name	n	Type	Time
SB-812	136	F	2015-
WestEnd-812	12	SPG	2016-
B2	30	FS	2016-
EastEnd-812	23	FS	2016-
CanAm-812	35	FS	2016-
EastSpan-812	27	FS	2016-

Readings

Ignore	#	Thickness	Time
	1	1484	2015-12-31 09:15:11
	2	1492	2015-12-31 09:15:13
	3	1498	2015-12-31 09:15:16
	4	1490	2015-12-31 09:15:18
	5	1486	2015-12-31 09:15:29
	6	1492	2015-12-31 09:15:29
	7	1492	2015-12-31 09:15:30
	8	1492	2015-12-31 09:15:30
	9	1490	2015-12-31 09:15:31
	10	1496	2015-12-31 09:15:31
	11	1492	2015-12-31 09:15:32
	12	1492	2015-12-31 09:15:32
	13	1490	2015-12-31 09:15:33
	14	1494	2015-12-31 09:15:33
	15	1492	2015-12-31 09:15:34
	16	1490	2015-12-31 09:15:34
	17	1490	2015-12-31 09:15:35
	18	1490	2015-12-31 09:15:36
	19	1492	2015-12-31 09:15:36
	20	1490	2015-12-31 09:15:37
	21	1490	2015-12-31 09:15:37
	22	1490	2015-12-31 09:15:38
	23	1490	2015-12-31 09:15:38
	24	1488	2015-12-31 09:15:39
	25	1492	2015-12-31 09:15:39
	26	1490	2015-12-31 09:15:40
	27	1490	2015-12-31 09:15:40
	28	1490	2015-12-31 09:15:41
	29	1494	2015-12-31 09:15:41
	30	1490	2015-12-31 09:15:42
	31	1490	2015-12-31 09:15:42
	32	1490	2015-12-31 09:15:43
	33	1492	2015-12-31 09:15:43
	34	1490	2015-12-31 09:15:44
	35	1490	2015-12-31 09:15:44
	36	1488	2015-12-31 09:15:45
	37	1488	2015-12-31 09:15:45
	38	1490	2015-12-31 09:15:46
	39	1490	2015-12-31 09:15:46
	40	1488	2015-12-31 09:15:47

Preview

US812 Bridge Approach, Oadensburg, NY



EastEnd-812 Summary

Thickness (microns)	#	x	σ	↓	↑
	23	317.9	16.2	300	358

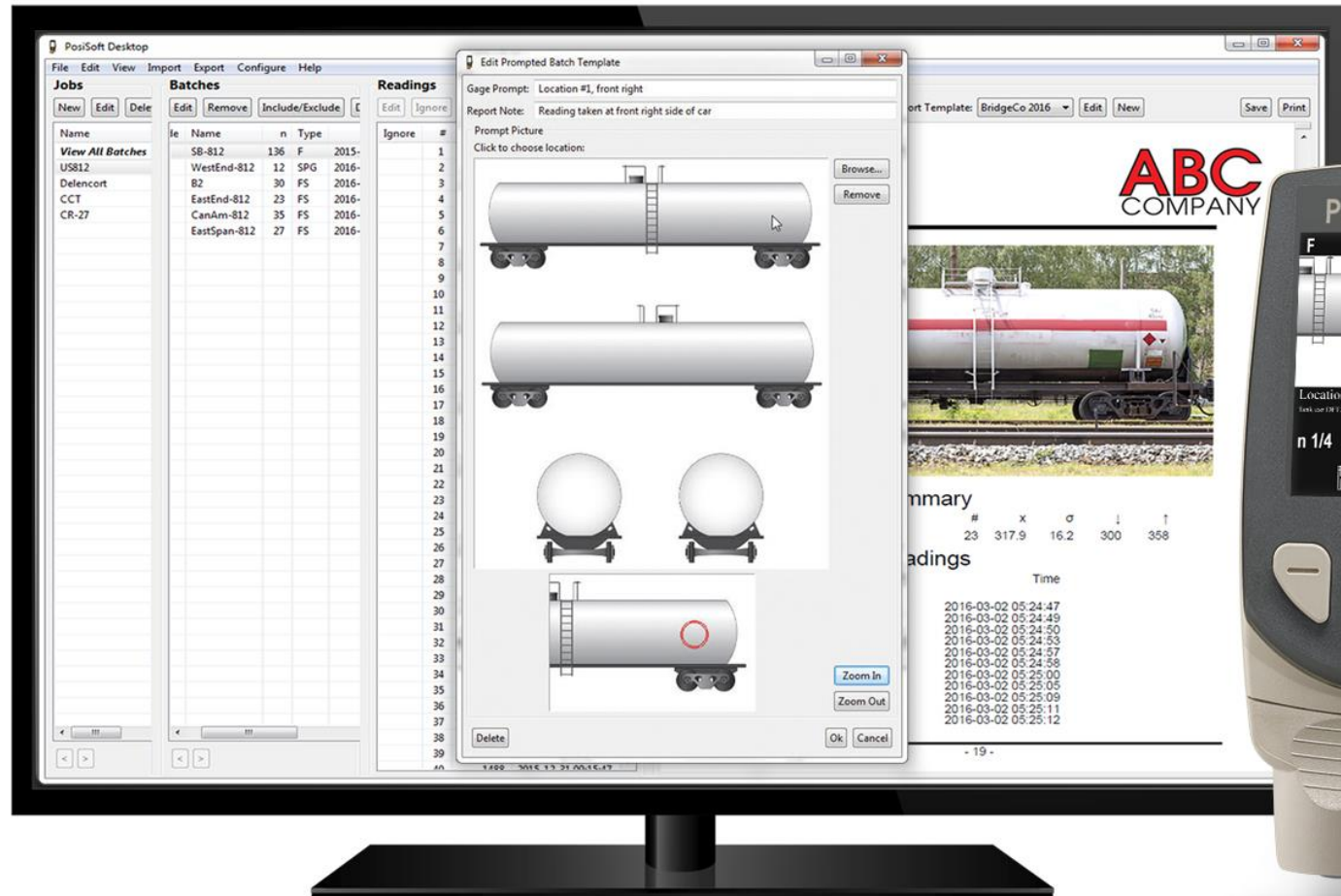
EastEnd-812 Readings

#	Thickness (microns)	Time
1	300	2016-03-02 05:24:47
2	304	2016-03-02 05:24:49
3	304	2016-03-02 05:24:50
4	358	2016-03-02 05:24:53
5	320	2016-03-02 05:24:57
6	322	2016-03-02 05:24:58
7	320	2016-03-02 05:25:00
8	322	2016-03-02 05:25:05
9	302	2016-03-02 05:25:09
10	310	2016-03-02 05:25:11
11	312	2016-03-02 05:25:12
12	304	2016-03-02 05:25:15
13	352	2016-03-02 05:25:33
14	352	2016-03-02 05:25:39
15	324	2016-03-02 05:25:44
16	320	2016-03-02 05:25:45
17	322	2016-03-02 05:25:47
18	306	2016-03-02 05:25:49
19	310	2016-03-02 05:25:54

- 19 -

PosiSoft Prompted Batch Mode

NEW

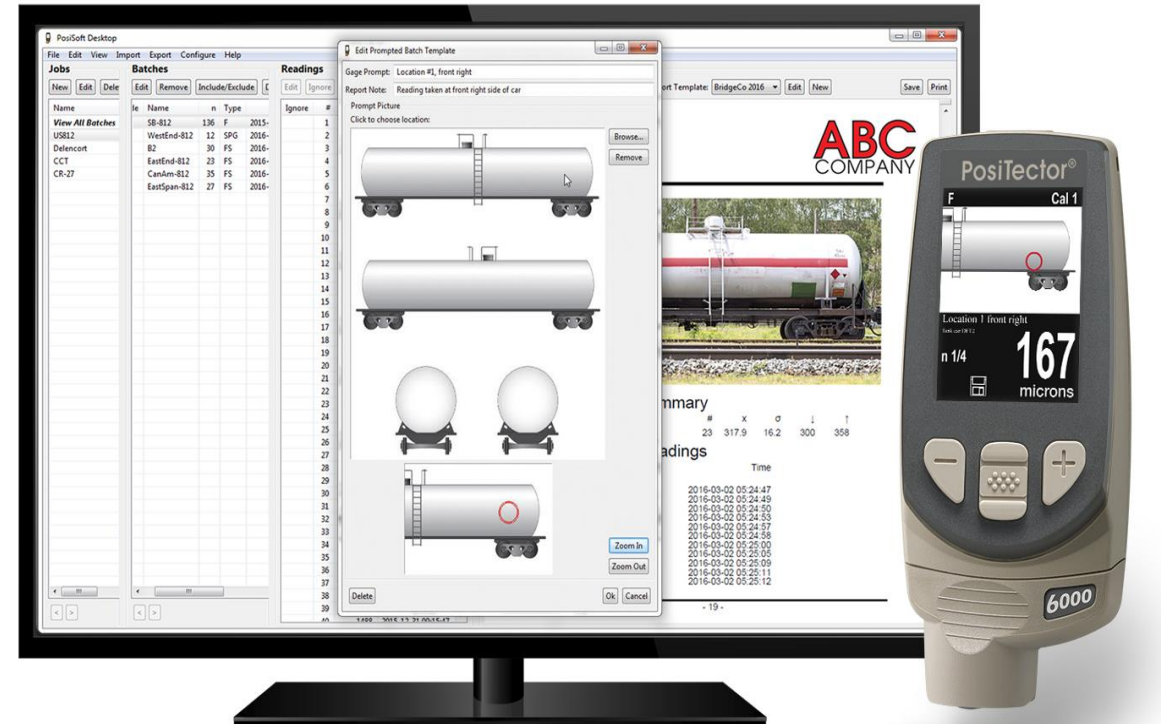


EMIN
Testing & Measuring Everything

PosiSoft Prompted Batch Mode

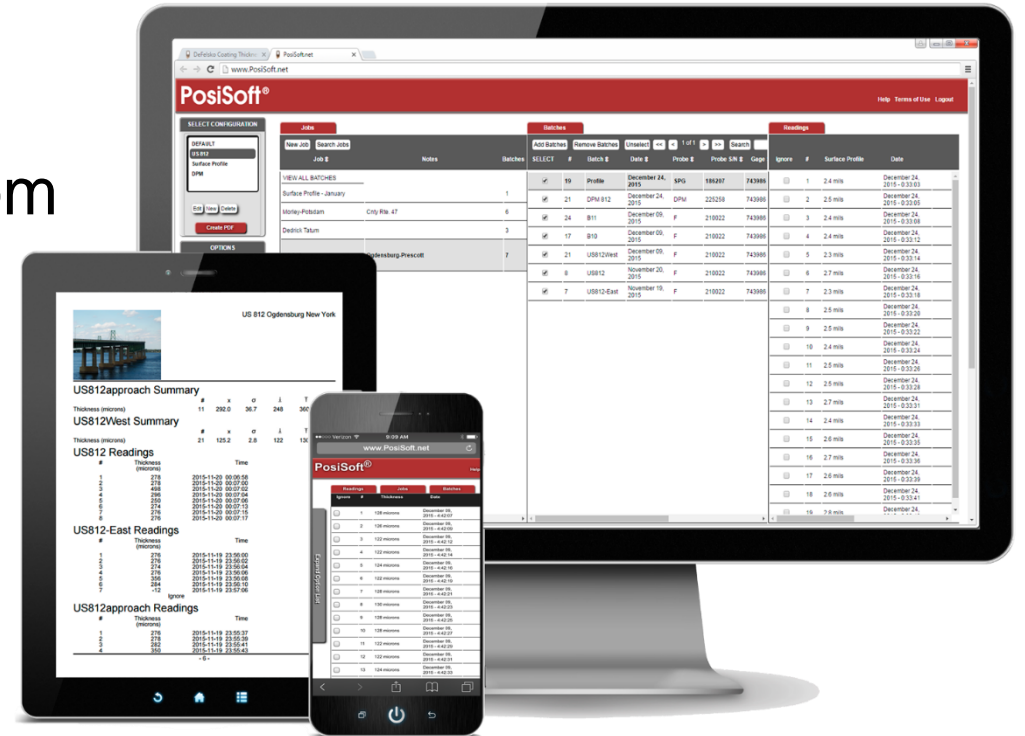
NEW

- Users can create pre-defined batches in **PosiSoft Desktop** with onscreen text and image prompts for each reading, then upload to PosiTector 6000 gages
- Ensures a consistent measurement pattern for repetitive jobs or when specific measurement locations are required
- Create and store multiple templates for different jobs



EMIN
Testing & Measuring Everything

- The intuitive and familiar interface of PosiSoft Desktop brought to your web browser
- Upload data directly to PosiSoft.net via WiFi
- Access data and generate custom reports from any web browser, on any device
- Generate custom, professional PDF reports



PosiSoft.net – Web Interface

The screenshot displays the PosiSoft.net web interface within a browser window. The interface is divided into several sections:

- Header:** PosiSoft® logo and navigation links (Help, Terms of Use, Logout).
- Left Sidebar:**
 - SELECT CONFIGURATION:** Includes a dropdown menu with 'DEFAULT', 'US 812', 'Surface Profile', and 'DPM'. Below it are 'Edit', 'New', and 'Delete' buttons, and a 'Create PDF' button.
 - OPTIONS:** A list of settings: Register Gage, Unregister Gage, Gage Name, Share Gage, Change Password, and Change Email.
 - LANGUAGE:** A dropdown menu currently set to 'English'.
 - DOWNLOADS:** A link to 'PosiSoft Desktop Manager version 3.0.9'.
- Main Content Area:**
 - Jobs:** A table with columns 'Job #', 'Notes', and 'Batches'. It lists 'Surface Profile - January' (1 batch), 'Morley-Potsdam' (6 batches), 'Dedrick Tatum' (3 batches), and 'US 812' (7 batches) with the note 'Ogdensburg-Prescott'.
 - Batches:** A table with columns 'SELECT', '#', 'Batch #', 'Date #', 'Probe #', 'Probe S/N #', and 'Gage'. It shows a list of batches with checkboxes for selection.
 - Readings:** A table with columns 'Ignore', '#', 'Surface Profile', and 'Date'. It displays a list of readings with checkboxes for ignoring them.

PosiTector Mobile App

- Compatible with PosiTector Advanced gages, PosiTector SmartLink, and PosiTest AT-A
- Take advantage of your smart device's features- touchscreen, keyboard, camera, email, WiFi, Bluetooth, cellular, dictation tools, and more
 - ✓ Add images, and annotate using touch controls
 - ✓ Rename batches using the keyboard
 - ✓ Easily navigate touchscreen menus
- Generate custom PDF reports- email them right from the job site
- Instantly backup every reading to the cloud- no account required

