



**Standard Color Viewer LED
Transmission Light Box
HC5100/HC3100**

Introduction:

3nh standard camera color viewer transmission light box is to provide special lighting environment and high illumination uniformity, light continuous adjustable, etc functions. They are suitable for 4:3 transmission test chart.

HC5100/HC3100 adopts 3nh independent research and development LED light, and it has higher illumination uniformity and better CRI (color rendering index), while CC5100/CC3100 adopts DNP original light and it can get the same color temperature and illumination uniformity with DNP SDCV 3500 transmission light box, but we have 250 ~ 10000 Lux adjustable illuminance while SDCV 3500 only has 6000 ~ 10000 Lux. It can't meet the requirement who needs to test image quality under 6000 lux.

Transmission light box offers a special light source to check the quality of camera. With two adjusting knobs, we can adjust the illuminance from 0 lux to 11000 lux. It fits for many kinds of transmission test charts 4:3 use, such as transmission greyscale charts, transmissive high resolution test chart, transparency grid test chart, etc. Through image test software, the analysis result is more professional and easier.

Application

Transmission light box is widely used for digital camera, phone camera, video camera, Security cameras, car camera, etc lens camera test quality control.

Performance Highlights

- I Illumination uniformity >92%, Extensive color rendering index CRI>90
- I LED dimmable dynamic range 0-11000lx, Flicker Free with 2 dimmer knobs
- I Standard Color HC5100/HC3100±100K, $D_{uv} \pm 0.002$
- I Excellent color/flux stability over 25000 hours lifespan
- I 60%+ higher efficiency than fluorescent light tube, Hg Free

General information

- I Power supply : AC100-240V,50/60HZ, 50W
- I Environment required, Temperature10-40°C, <RH80%
- I Size : 37W*32.5H*16.5Dcm
- I Projection area : 25W*19Hcm
- I Net weight ~6kg

Warning

- I Do not connect with power grid other than AC100-240V before turning on the light
- I Suggest waiting for 10 minutes to get stable color after turning on the light
- I Be careful to prevent scratching diffusing/reflection plate and clean by non-dust wiper with alcohol

PRODUCT DETAIL

Transmission light box offers a special light source to check the quality of camera. With two adjusting knobs, we can adjust the illuminance from 0 lux to 11000 lux. It fits for many kinds of transmission test charts 4:3 use, such as transmission greyscale charts, transmissive high resolution test chart, transparency grid test chart, etc. Through image test software, the analysis result is more professional and easier.



UNIQUE DESIGN SUBVERT THE
TRADITIONAL TRANSMISSION BOXES

ENVIRONMENTAL PROTECTION DOES
NOT CONTAIN MERCURY



ILLUMINATION UNIFORMITY: 92%
COLOR RENDERING INDEX CRI: 90



2 DIMMER KNOBS
DIMMING MORE ACCURATE



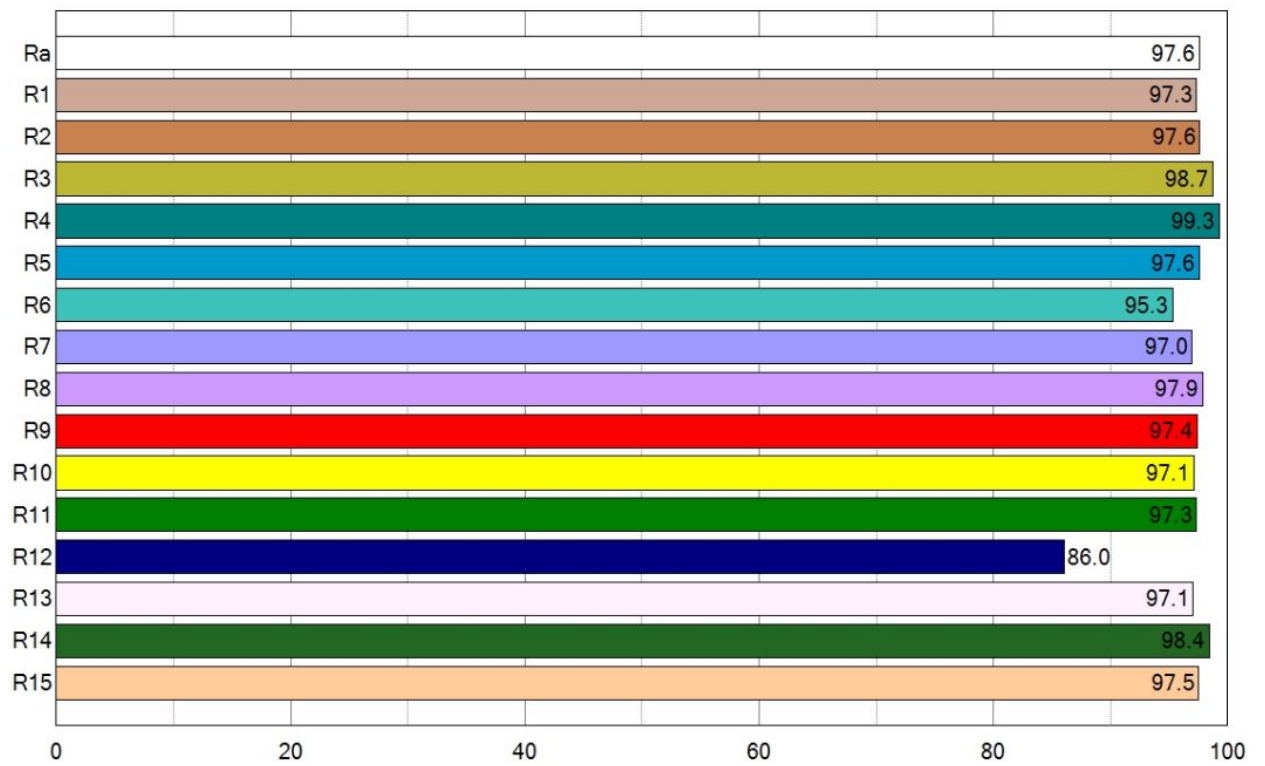
LED LIFE OF UP TO
MORE THAN 25,000 HOURS



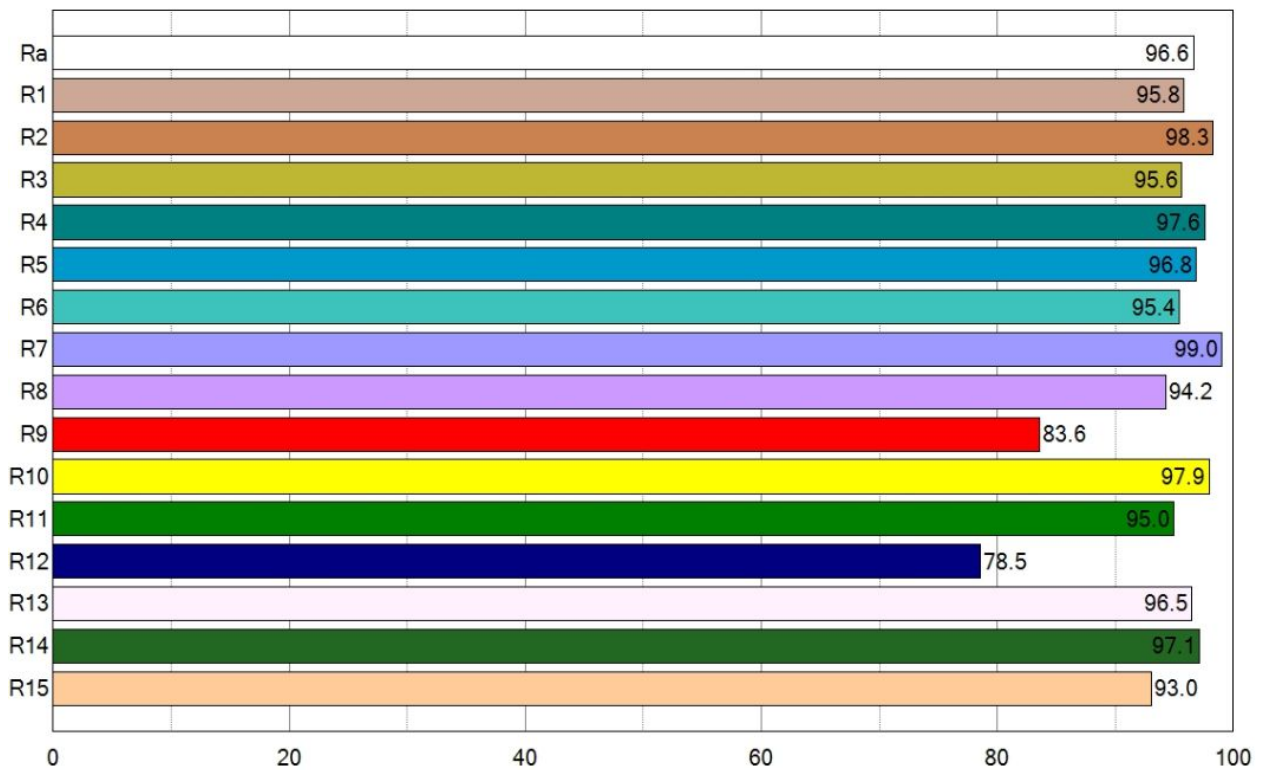
APPLICATION

Transmission light box is widely used for digital camera, phone camera, video camera, Security cameras, car camera, etc lens camera test quality control.





CRI for HC3100



CRI for HC5100