

AIH Series 250 Watts

Data Sheet

Total Power: 250 Watts
(12 V @ 20.8 A)
Input Voltage: 300 V
of Outputs: Single

SPECIAL FEATURES

- 250 W continuous power at 100 °C baseplate temperature
- High efficiency - up to 88%
- Low output ripple and noise
- Positive and Negative enable function
- Excellent transient response
- Safety isolated low voltage control and monitoring
- High reliability
- Wide input voltage range
- Paralleable with accurate current sharing
- Adjustable output voltage
- Regulation to zero load
- Temperature monitor output
- EU Directive 2002/95/EC compliant for RoHS
- Two year warranty

SAFETY

- UL 60950 Recognized
- cUL 60950 Recognized
- TUV EN60950 Licensed
- CE CE Mark



Electrical Specifications

Input	
Input range	250 - 420 VDC
Input surge	450 V / 100 ms
Efficiency*	88% @ 5.0 V (typical)
Output	
Load Regulation	60 W for convection; 80 W with 30 CFM forced air
Line Regulation	-5, +10% minimum
Noise / ripple	20 ms @ 60 W load, 115 VAC nominal line
Output voltage adjust range	Short circuit protection on all outputs Case overload protected @ 110 - 145% above peak rating
Transient response	5 V output; 5.7 - 6.7 VDC. Other outputs 10% to 25% above nominal output
Current share accuracy	Compensates for 0.5 V lead drop min. Will operate without remote sense connected Reverse connection protected
Oversvoltage protection	130% Vo (3.3 Vo and 5 Vo); 125% Vo (other Vo)
Current limit	120% Io maximum
Control	
Voltage adjust	80 to 120% for 5 V and above; +10% / -50% for below 5 V
Enable	TTL compatible (positive & negative enable options)
Clock input (external sync)	3.3 to 5.5 Vp-p @ 800 MHz ±5%
Temperature monitor output	10 mV/°K (2.73 = 0 °C)
Current monitor output	0 to 1 mA (1 mA = 100% Io rated)

Note: Nominal values apply with sense pins disconnected and other control pin unconnected.

*For detailed technical information, please refer to the product's Technical Reference Notes found at www.Artesyn.com/power.

Environmental Specifications

Operating temperature	-20 °C to +100 °C (case temperature)
Startup temperature	-40 °C to +100 °C (case temperature)
Storage temperature	-40 °C to +100 °C
Overtemperature protection	120 °C max
MTBF	1M hours (Demonstrated)

Ordering Information

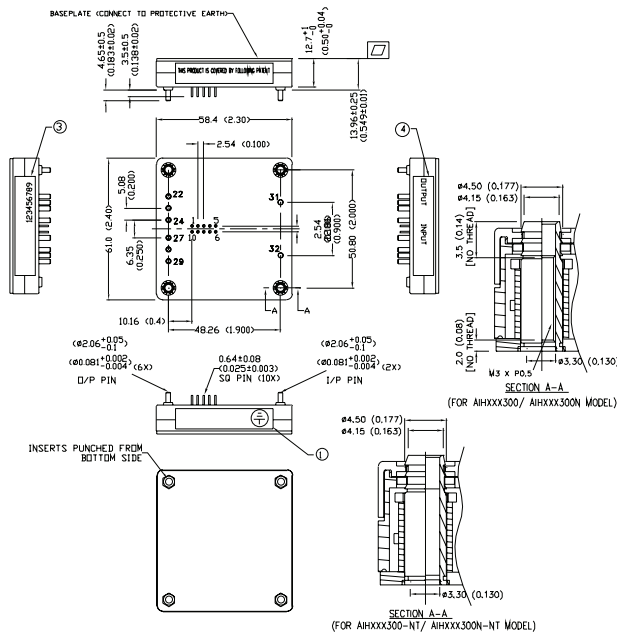
Input Voltage	Output Voltage	Efficiency	Model Number
300 V	1.8 V @ 50 A	80% (Typ)	AIH50Y300 *-**L
300 V	3.3 V @ 50 A	82% (Typ)	AIH50F300 *-**L
300 V	5.0 V @ 40 A	88% (Typ)	AIH40A300 *-**L
300 V	12 V @ 20.8 A	86% (Typ)	AIH20B300 *-**L
300 V	15 V @ 16.6 A	90% (Typ)	AIH16C300 *-**L
300 V	24 V @ 10.4 A	90% (Typ)	AIH10H300 *-**L

1. For Negative enable add suffix "N".
2. For Non-thread hole, add suffix "-NT".
3. For RoHS 6, add suffix "-L".

Pin Assignments

Input	Output	Control Pins
31. Positive	22. Positive	1. +Sense
32. Negative	23. Positive	2. Temp Mon
	24. Positive	3. C Mon
	27. Negative	4. C Share
	28. Negative	5. SDA
	29. Negative	6. SCL
		7. CLK IN
		8. V Adj
		9. Enable
		10. -Sense

Mechanical Drawings



WORLDWIDE OFFICES

Americas

2900 South Diablo Way
Suite B100
Tempe, AZ 85282, USA
+1 888 412 7832

Europe (UK)

Ground Floor Offices, Barbary House
4 Harbour Buildings, Waterfront West
Brierley Hill, West Midlands
DY5 1LN, UK
+44 (0) 1384 842 211

Asia (HK)

14/F, Lu Plaza
2 Wing Yip Street
Kwun Tong, Kowloon
Hong Kong
+852 2176 3333

ARTESYNTM
An Advanced Energy Company

www.artesyn.com

Artesyn Embedded Technologies, Artesyn Embedded Power, Artesyn, and all Artesyn related logos are trademarks and service marks of Artesyn Embedded Technologies, Inc. All other names and logos referred to are trade names, trademarks, or registered trademarks of their respective owners. Specifications are subject to change without notice. © 2019 Artesyn Embedded Technologies, Inc. All rights reserved. For full legal terms and conditions, please visit www.artesyn.com/legal.

For more information: www.artesyn.com
For support: productsupport.ep@artesyn.com

AIH Series-DS 19Nov2019