

DIGITAL INDICATORS (WITH TRANSMIT BUTTON AND INDICATION)

DATA
OUTPUT

**INSPECTION
CERTIFICATE**
TRACEABLE TO NIST



2103-10Q

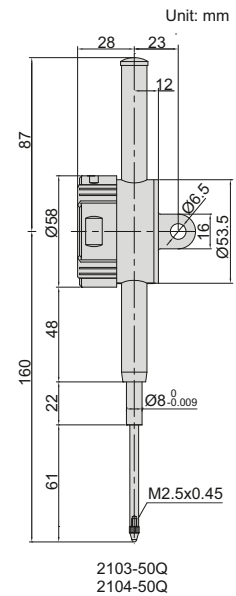
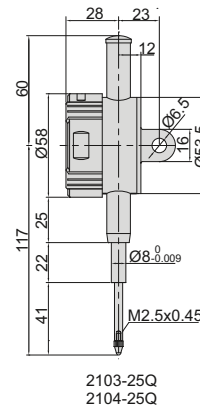
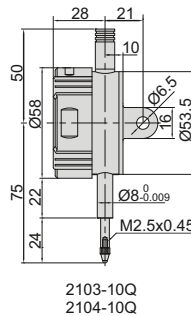


2104-25Q

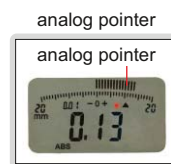
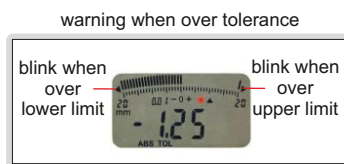
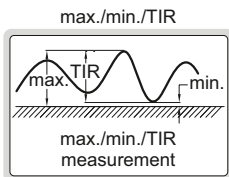


2103-50Q

- Reading in digital and analog
- Display can be rotated by 320°
- Button function: on/off, zero, tolerance Go and No-Go display, data preset, measuring direction change, max./min./TIR measurement, inch/metric conversion, absolute/incremental measurement, data output
- Keep preset data and tolerance data in memory after restart
- CR2032 battery, automatic power off
- Data output
- Optional accessory: data output cable (code 7302-SPC12A, 7305-C03, 7305-SPC7A), backs (page 129~130), contact points (page 126~128)



Unit: mm



Resolution 0.001mm/0.00005"

| Code | Range | Accuracy | Hysteresis | Remark |
|------------|-------------|----------|------------|-----------|
| 2103-10FQ* | 12.7mm/0.5" | 5µm | 2µm | flat back |
| 2103-25FQ* | 25.4mm/1" | 5µm | 3µm | flat back |
| 2103-50FQ* | 50.8mm/2" | 6µm | 3µm | flat back |
| 2103-10Q* | 12.7mm/0.5" | 5µm | 2µm | lug back |
| 2103-25Q* | 25.4mm/1" | 5µm | 3µm | lug back |
| 2103-50Q* | 50.8mm/2" | 6µm | 3µm | lug back |

Resolution 0.01mm/0.0005"

| Code | Range | Accuracy | Hysteresis | Remark |
|------------|-------------|----------|------------|-----------|
| 2104-10FQ* | 12.7mm/0.5" | 20µm | 10µm | flat back |
| 2104-25FQ* | 25.4mm/1" | 20µm | 10µm | flat back |
| 2104-50FQ* | 50.8mm/2" | 30µm | 10µm | flat back |
| 2104-10Q* | 12.7mm/0.5" | 20µm | 10µm | lug back |
| 2104-25Q* | 25.4mm/1" | 20µm | 10µm | lug back |
| 2104-50Q* | 50.8mm/2" | 30µm | 10µm | lug back |

*Supplied with manufacturer inspection certificate traceable to NIST USA