

SMART MICROSCOPE CODE ISM-DL400**

**AUTOMATICALLY LOCATE WORKPIECES
REGARDLESS OF POSITION AND DIRECTION**

**BUILT-IN SOFTWARE
WITHOUT COMPUTER**



NG: red light
OK: green light

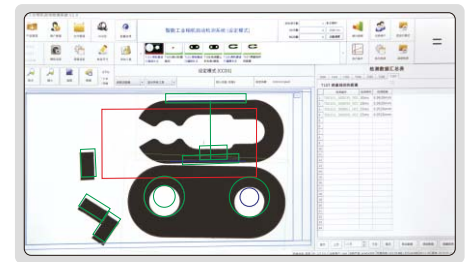
NG: buzzer warning

sensor switch (triggered when an object passes by within 3cm and a detection is performed, the interval time between triggering and detection is adjustable)

camera function

- surface defect detection
- dimension measurement
- read barcode
- burr detection
- contour matching
- character recognition
- color detection
- read QR code
- object counting
- thread measurement

detect multiple different workpieces at one time



- Automatically identify different workpieces
- Automatically locate workpieces regardless of position and direction
- Built-in software, PLC control input and output interface
- Including multiple detection tools
- Automatically calculate, store the test results and export to Excel

ToolID	Tool Name	Detection Times	OK Count	NG Count	Ident Rate	Detection Rate
T102	Profile-Block	400	200	200	50.0%	49.98%
T103	Block	80	40	40	50.0%	49.98%
Summary		480	240	240	49.98%	49.93%

report showing the perform times of each tool, quantity of OK and NG, the report can be saved

T102 Cluster	Detection number	Detection time	Detection color	Number of spots	Maximum width
1	700101_000641_001	31ms	白色	0	0.0000mm
2	700101_001151_001	31ms	白色	0	0.0000mm
3	700101_001202_001	31ms	白色	0	0.0000mm

report of each detection is automatically created and saved

SPECIFICATION

Magnification	15X~100X
Resolution	1920×1080
Pixel	2M
Single pixel size	3.75×3.75µm
Frame rate	60fps
Sensor	1/2" CMOS
Chip structure	FPGA+ARM
Operating system	Linux 3.10
Power supply	220V, 50/60Hz **
Dimension (L×W×H)	570×300×430mm
Weight	6.5kg

** Add "-U" on code No. when power supply is 110V, 50/60Hz

STANDARD DELIVERY

Main unit	1 pc
0.5X camera adapter	1 pc
1X auxiliary objective	1 pc
Calibration plate	1 pc
16G USB flash disk	1 pc
White/black plate	1 pc
HDMI cable	1 pc
Power adapter	2 pcs

MAGNIFICATION, FOCUS DISTANCE AND VIEW FIELD

Auxiliary objective	Specification	Camera adapter	
		0.5X (included)	1X (optional)
1X (included)	Magnification	15~100X	30~200X
	Focus distance	70±2mm	70±2mm
	View filed	16×11~2.5×1.6mm	7.8×5.3~1.2×0.8mm
2X (optional)	Magnification	30~200X	60~400X
	Focus distance	29±2mm	29±2mm
	View filed	7.8×5.3~1.2×0.8mm	3.8×2.7~0.6×0.4mm

OPTIONAL ACCESSORY

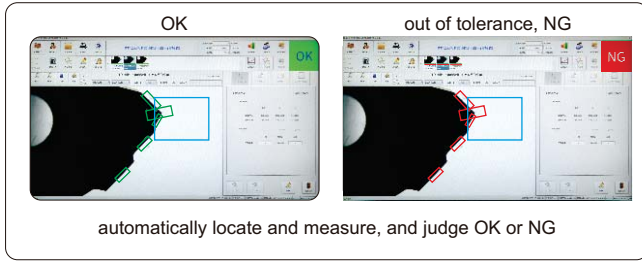
1X camera adapter	ISM-DL-CA1X
2X auxiliary objective	ISM-DL-OB2X
LED auxiliary illumination	ISM-DL-LED
Coaxial light illumination	ISM-DL-COAXIAL
Auxiliary objective	page 276

To be continued

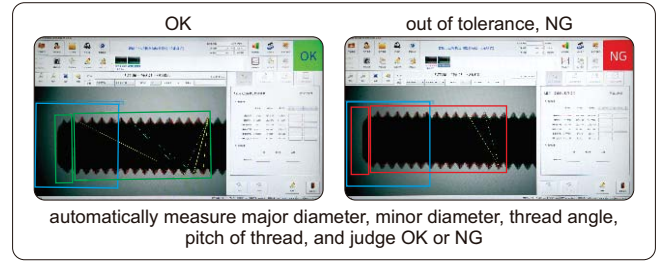
Continued from previous page

■ APPLICATION EXAMPLES:

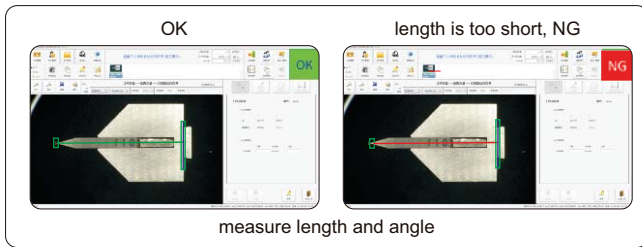
dimension measurement



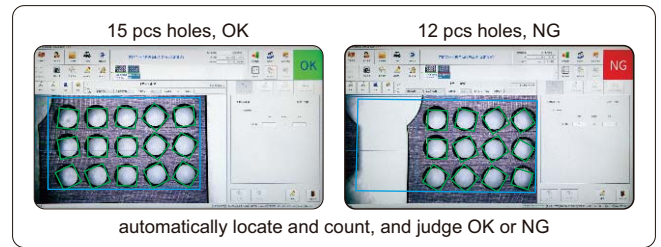
thread measurement



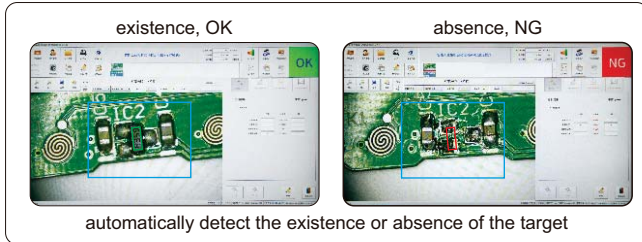
cutting tools measurement



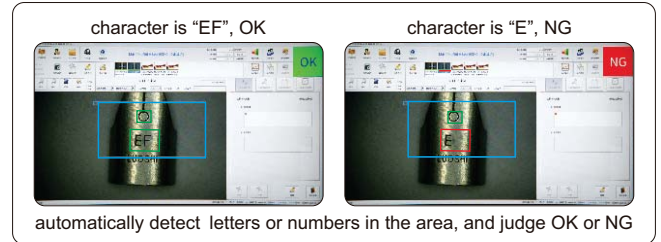
counting



existence or absence



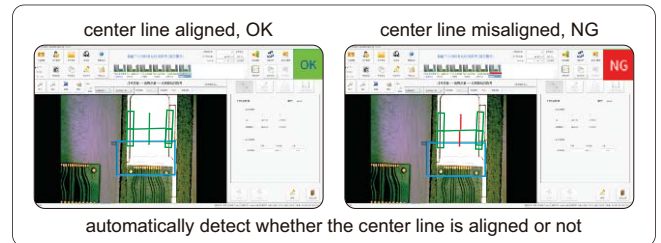
character recognition



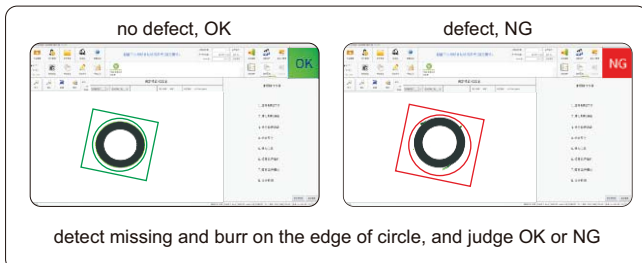
color detection



location detection



surface defect detection



glue detection

