



PURIVEN_VACUUM
VACUUM OVEN

Vacuum Drying Oven for the application of drying sample which is sensitive to high temperature and has risk of oxidation, and of analyzing moisture in samples

- Stainless steel 304 interior
- Aluminum shelves for heat transmission

● ● ● **STANDARD SPECIFICATION**

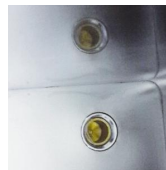


Model		PURIVEN VACUUM 27	PURIVEN VACUUM 64
Size	Inner(W x D x H)mm	300 x 300 x 300	400 x 400 x 400
	Out(W x D x H)mm	570 x 510 x 636	670 x 610 x 736
	Capacity	27	64
	Weight(Kg)	89	105
Controller		Standard : Digital PID controller, programmable(9 memories)	
Inside Material		Stainless steel plate 304	
Outside Material		Epoxy powder coated steel plate	
Shelf		Aluminum shelves 2EA	
Temperature	Range	Ambient +5°C ~ 200°C	
	Sensor Type	PT 100Ω	
Power		230V ±10%, 50-60Hz, 1Phase	
Power Consumption		335W	635W
Safety		Over heat protector, Earth leakage circuit breaker, Fuse installed noise filter	



Hydraulic pressure gauge

More stable than air driven gauge



Built in cable port in back

Available to connect to additional external sensors

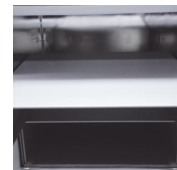


Spring bridged reinforced glass window

Capable to resist inner vacuum pressure



Two step door latch for safe locking



Aluminum shelf for heat transfer

● ● ● **MAIN FEATURE**

● **Robust body to resist the high vacuum pressure**

The inner plate which is made of rigid and thick stainless steel can resist against high vacuum pressure for long time.

● **Aluminum shelf with high efficiency of heat conduction**

Aluminum shelf with excellent heat conductivity is adopted to evenly transfer heat to the samples onto itself.

● **Programmable digital controller for implementing various experimental condition**

Flexible programs can be organized by user as saving different temperature and time in a series of memory spaces.

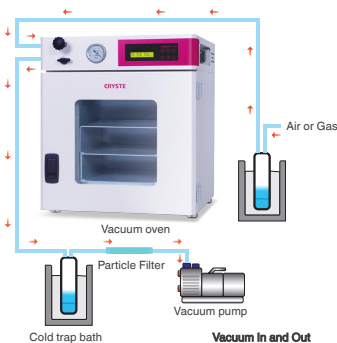
● **Highly stable hydraulic pressure gauge**

A stable indicator in the hydraulic pressure gauge ensures to show accurate vacuum pressure

● ● ● **FEATURE PLUS**

● **Separation of vacuum setting line and releasing line**

Vacuum line is separated for quick vacuum setting and releasing.



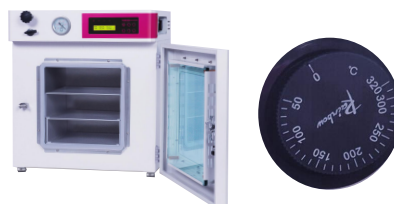
● ● ● **SAFE GUARD**

● **Optimized internal structure to have strong vacuum resistance**

Structure of wide-joint between inner and outer plate is designed optimally to withstand strong vacuum pressure longer in conjunction with high pressure resistant gasket

● **Overheating protection**

Block the risk of overheating even if there is a problem with automatic temperature control.



● ● ● **ORDER INFORMATION**

DIVISION	ITEM	ORDER CODE			
		PURIVEN VACUUM 27	PURIVEN VACUUM 27 RS232	PURIVEN VACUUM 64	PURIVEN VACUUM 64 RS232
PRODUCT	Main Body	PVAC-27-MB	PVAC-27-232-MB	PVAC-64-MB	PVAC-64-232-MB
	Vacuum Pump & Acc	PVAC-27-OP1	PVAC-27-232-OP1	PVAC-64-OP1	PVAC-64-232-OP1
OPTION	Vacuum Pump & Acc (High performance)	PVAC-27-OP2	PVAC-27-232-OP2	PVAC-64-OP2	PVAC-64-232-OP2
	● Vacuum Pump Cabinet	PVAC-27-OP3	PVAC-27-232-OP3	PVAC-64-OP3	PVAC-64-232-OP3
SPARE	Aluminum Shelf	PVAC-27-SP1	PVAC-27-232-SP1	PVAC-64-SP1	PVAC-64-232-SP1
	Heater	PVAC-27-SP2	PVAC-27-232-SP2	PVAC-64-SP2	PVAC-64-232-SP2
	Door Gasket	PVAC-27-SP3	PVAC-27-232-SP3	PVAC-64-SP3	PVAC-64-232-SP3
	Pressure Gauge	PVAC-27-SP4	PVAC-27-232-SP4	PVAC-64-SP4	PVAC-64-232-SP4
	Mainboard & Controller Set	PVAC-27-SP5	PVAC-27-232-SP5	PVAC-64-SP5	PVAC-64-232-SP5
	Mainboard & Controller Set(Optional)	PVAC-27-SP6	PVAC-27-232-SP6	PVAC-64-SP6	PVAC-64-232-SP6
	Electricity Leakage Breaker	PVAC-27-SP7	PVAC-27-232-SP7	PVAC-64-SP7	PVAC-64-232-SP7

● These options must be ordered before confirmation of order because it's not possible to modify later