





Product Categories

Related Applications

- 

Automotive Electronics Test Solutions
- 

HID Lamp Test Solutions
- 

Fluorescent Lamp Test Solutions
- 

CFL Lamp Test Solutions

Related Technical Articles

- Flicker Comparison and Test Methods of Various Light Sources
- How to test LED fixture for startup, rise time and flicker
- LISUN 2019 LED Expo New Delhi Successfully Concluded
- LISUN 2019 HKTDC Hong Kong International Lighting Fair (Autumn Edition) Successfully Concluded
- How to choose LISUN products for Saudi Arabia' s latest standard SASO2902?
- LISUN held a lighting Technology Salon in Egypt
- LISUN held a lighting technology salon in Iran
- LISUN held a lighting technology salon in Saudi Arabia
- LED packaging principle
- LISUN will visit India to attend the New Delhi Lighting Fair in October 2018
- How to measuring LED lamp start, run up time and flicker effectively?
- How to Solve the Stroboscopic Problem of LED Lighting?
- LED Lamps Aging and Life Test
- LISUN participate in the largest Lighting Fair in Russia – Interlight Moscow
- LISUN Exhibition Notice: November 2017 Thailand International Lighting Fair
- LISUN Exhibition Notice: November 2017 Interlight Moscow
- LISUN Participate in the 2017 Hong Kong International Lighting Fair
- LISUN engineer come back with fruitful result from the Istanbul Lighting Exhibition
- LISUN Exhibition Notice: October 2017 Hong Kong International Lighting Fair
- LISUN Exhibition Notice: September 2017 Istanbul Lighting Exhibition
- LISUN Exhibition Notice: 2017 Year “One Belt One Road” The Baltic states Economic Forum
- The Method of Measuring LEDs and LED Luminaires Flicker
- LISUN on the 2015 New Delhi LED Expo



Lamp Start, Run-up Time and Flicker Test System

Product No: LSRF-3

Get a Quote

Name* Company*

Email* Cell/WhatsApp

Message*

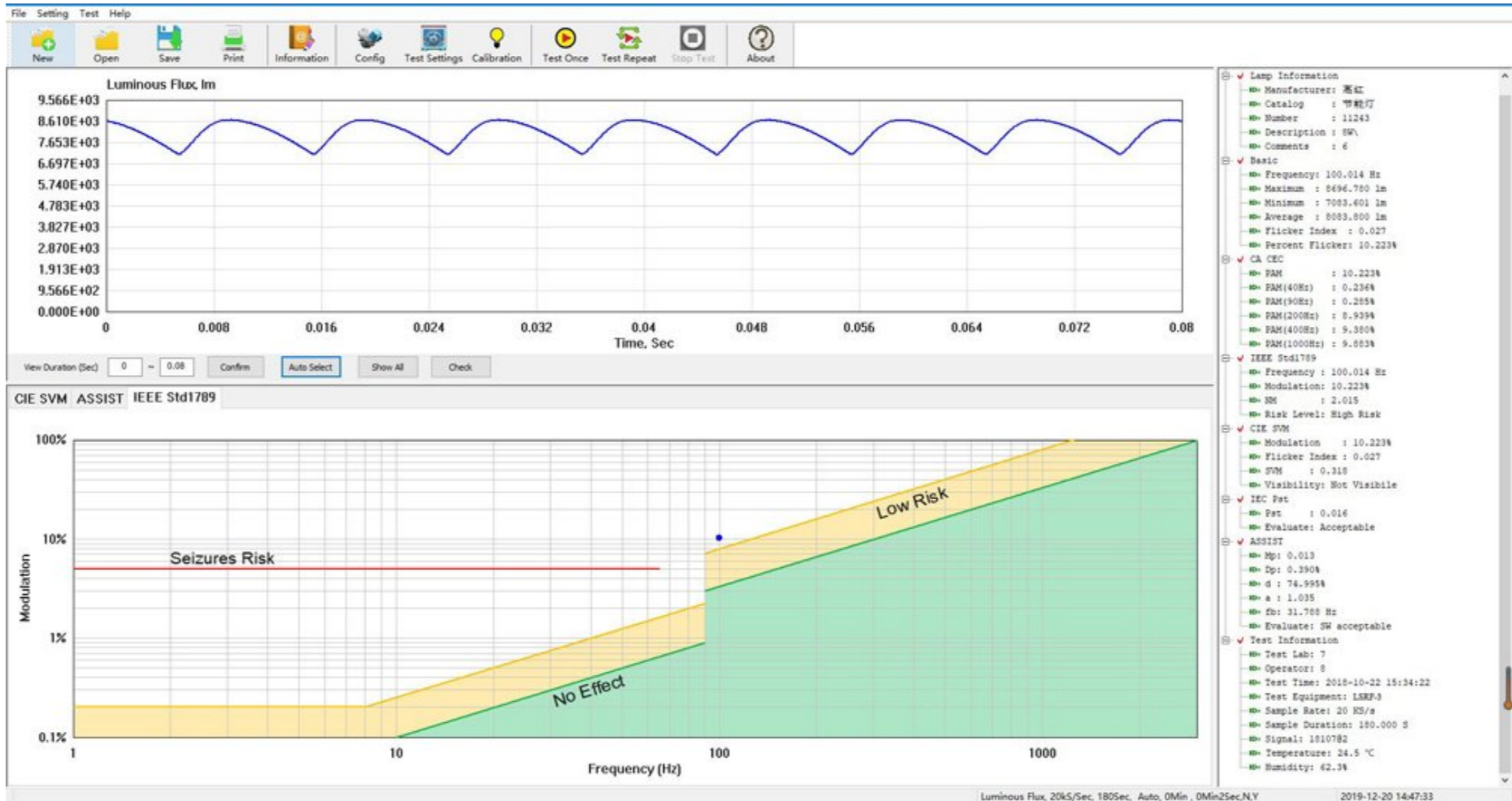
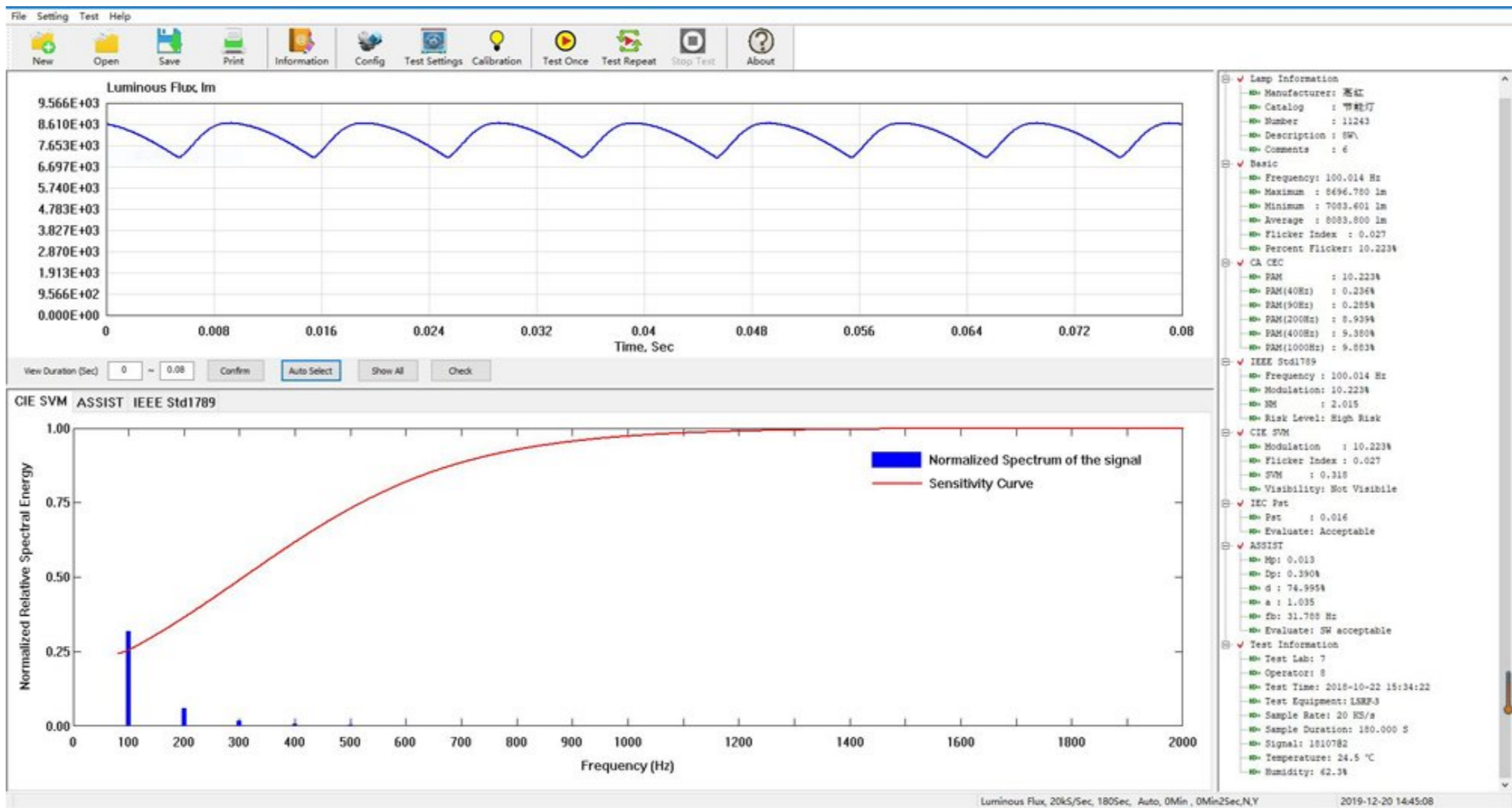
Send



Description Video Download

LSRF-3 is equipped with Class A fast photometric probe, so the sampling speed is up to 100kHz. It fully meets the requirement of BASIC, Energy Star V2.1, IEC-Pst, CA CEC, ASSIST, CIE SVM, IEEE Std 1789 standards, etc. It is professional for flicker test of LED lights and lamps, energy-saving lamps, etc. According to EU directives 1194/2012, 2009/125 / EC, EU2019/2015 – EU2019/2020 and IEC60969 “Self-ballasted Lamps for General Lighting Services—Performance Requirements” and other requirements, in conjunction with LISUN’ s LSP-500VARC AC Power Source (With Trigger Function) also can test the Start and Run-up time of lamps.

Lamp Flicker test interface (Need to work with LISUN Integrating Sphere and Standard Light Source):



Lamp Start and Run-up test interface (Need to work with LISUN’ s LSP-500VARC AC Power Source with Trigger Function):

