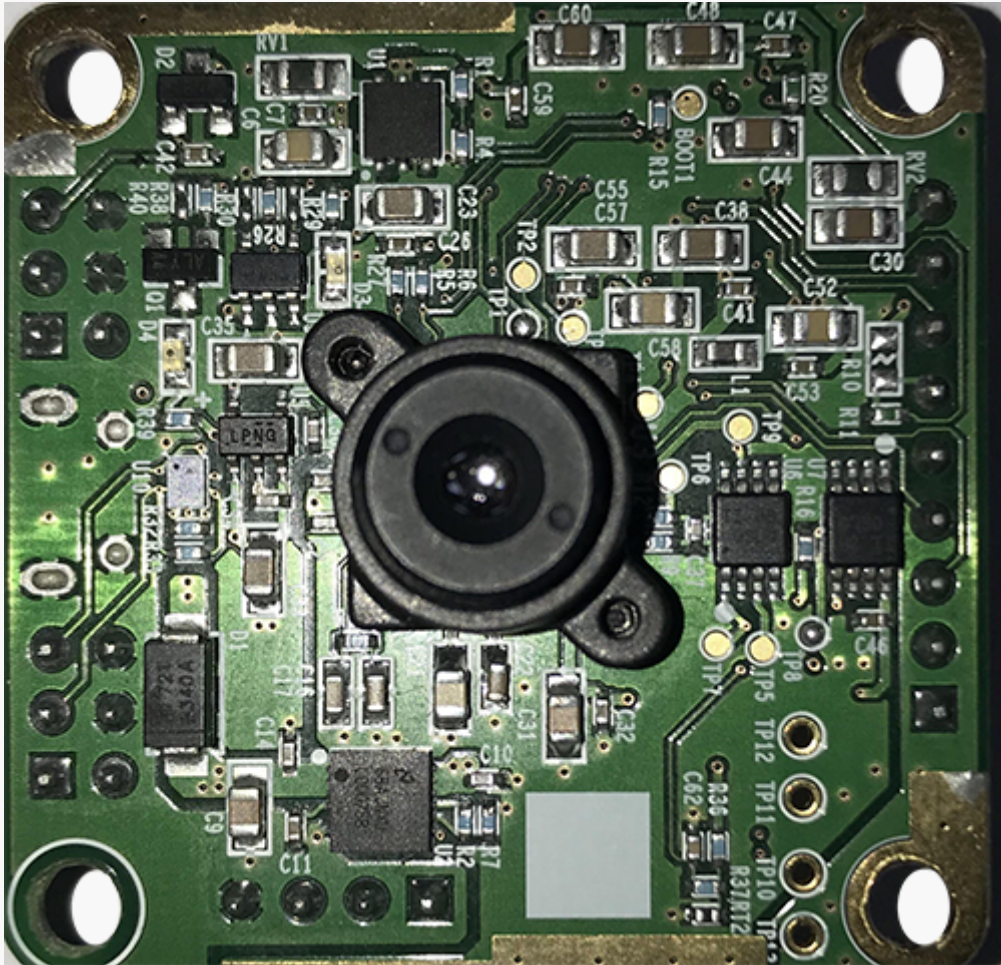




# emTake



- **full CMOS technology enables mass production and low cost**
- **Easy development of systems, apps and services using common I/F**
- **Wide Dynamic Range**
- **various application & System**

\*\* emTake is an exclusive dealer of sensor module by contract

## Feature & Spec.

### [Spec]

<b>Resolution</b>	80 x 60
<b>Pixel Size</b>	35 um
<b>NETD</b>	< 100 mk
<b>sensor type</b>	CMOS, Uncooled Amorphous Silicon(a-Si) Micro bolometer
<b>Lens</b>	30° / 90°
<b>Spectral Range</b>	8um ~ 14 um ( LWIR )
<b>Measurement Temperature</b>	-10°C ~ 100°C
<b>Relative temperature sensing power</b>	0.1°C @30°C
<b>Measurement error rate</b>	±3°C or 5%(@30°C)
<b>Shutter type</b>	Shutterless or Shuttered (option)
<b>Power</b>	5.0V (DC)

<b>Power Consumption</b>	200mW ↓
<b>Operating Temperature</b>	-10 ~ 50°C
<b>Interface</b>	USB / SPI / I2C / GPIO
<b>Delivery Temperature</b>	-40°C ~ 105°C
<b>Size</b>	40mm x 40mm or 35mm x 25mm

### **[Appication]**

- Security : Security Camera
- Telco : IoT Device, Home IP Camera
- Electronics : Smart Airconditioner
- Automobile : sensing human/animal at Indoor/outdoor
- Agriculture : protecting asset of the corps/poultry/live stock & the wild animals

### **[Differentiation]**

- Full CMOS Semiconductor tech
- Common I/F : USB, SPI, I2C
- Wide Dynamic Range Tech.
- PC Viewer S/W

### **[Sensor Core / Sensor Module]**

- Sensor Core = Sensor + Lens + Calibration IC
- Sensor Module = Sensor Core + Digital I/F (USB/SPI/I2C/GPIO/Reset etc)

### **[Model Name]**

- Sensor Module : TW3530 (30-deg Lens), TW3590 (90-deg Lens)
- Sensor Core : TC3530 (30-deg Lens), TC3590 (90-deg Lens)