

**INSIZE**  
**CERTIFICATE**  
 TRACEABLE TO NIST

SHOCK  
 PROOF

- Shockproof
- Jeweled bearing
- With limit pointers
- Optional accessory:  
 backs (page 129~130),  
 contact points (page 126~128),  
 lifting lever (code **6289-150**)



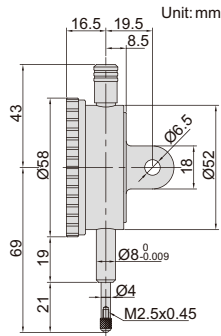
2891-1

lifting lever (optional)



## HIGH PRECISION DIAL INDICATORS

**INSIZE PLUS**  
 MADE IN GERMANY



Code	Range	Graduation	Accuracy	Hysteresis	Range/rev	Dial reading	Remark
2891-1 *	1mm	0.001mm	3 $\mu$ m	1.5 $\mu$ m	0.1mm	0-100	lug back
2891-1F *	1mm	0.001mm	3 $\mu$ m	1.5 $\mu$ m	0.1mm	0-100	flat back

\* Supplied with manufacturer inspection certificate traceable to NIST USA