



## Mini Float Type Level Switch

Family                      Mini Float Type Level switch

• Name                      DLF - 1P - 1S - F

- Description
- Mifi float type level s/w
  - Order spec.
  - Flange Type
  - Stainless steel material

# Application

DLF is mini-float level switch for controlling small size tanks.

Reed switch in the sensor operates as the float moves up and down in which a permanent magnet installed.

This is a level switch using on/off signal from the relay.

DLF - 1P(POINT) - 1S(STS) - F(Flange) is a level switch which controls 4 each contact points with 1 floats.

According to user's choice, it is available to produce output up to 4 points contact signal.

## Features

- ▶ This mini sensor is for indicating liquid level and high level alarming to control.
- ▶ It is usually used in semiconductor, medical equipment, chemical, and fuel tanks.
- ▶ It is cost-effective, simple to set-up, very dependable and durable.

## General Specifications

Operating Temperature	-40°C ~ 100°C
Max. Pressure	10 Kgf/cm <sup>2</sup>
Signal Output	Connect (SPST)
Connect Rat.	5VDC 0.5A / 220VAC 1A
Insulation Resistance	500 MΩ (Min.)
Dimension	Stem - Ø8
	Float - Ø28
	Flange - Order Spec.

Material

Stem - SUS304 (Option - SUS316)

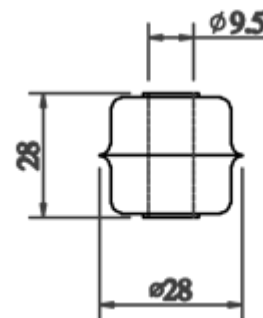
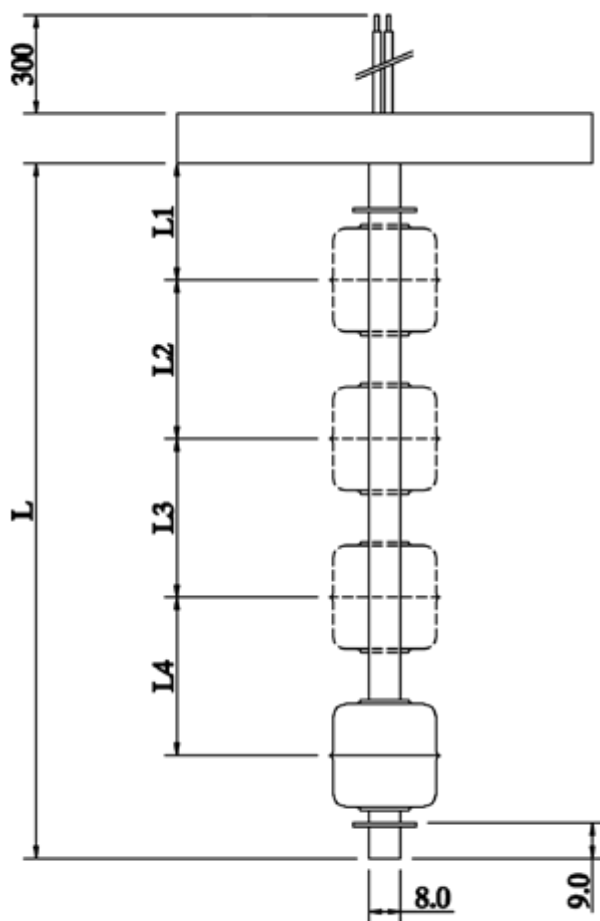
Flange - SUS304 (Option - SUS316)

Float -SUS304 (Option - SUS316)

E-ring - SUS304 (Option - SUS316)

Wire - AWG 22 1015 (Option - TEFRON)

## • Plan



**FLOAT DETAIL**