

# CONCRETE

## AUTOMATIC COMPRESSION MACHINES

### UNIT TEST AUTOCON AUTOMATIC RANGE from 600-5000kN

The automatic range of compression machine available in 600, 1200, 1500, 2000, 2500, 3000 and 4000kN version to satisfy BS EN 12390 Annex A or B and other International standard. Also can connect to Automatic Flexural test Frame with capacity 50, 100, 200 and 300 or 600kN.



ADS 200/EL, ADS 250/EL, ADS 300/EL Automatic Test Machine

The automatic Twin Frame 250kN/10kN Cement Compression / Flexural Test Machine is available for testing cement or mortar prisms to BS EN 196-1 or ASTM Standard.



ADS 25/10EN Twin Frame 250kN or 300kN Automatic Cement Test Machine with 10kN Flexural Test

## UNIT TEST SCIENTIFIC

CONSTRUCTION MATERIAL AND  
LABORATORY TESTING EQUIPMENTS FOR  
SOIL, CONCRETE AND ASPHALT

## UNIT TEST BLOCK TEST MACHINE RANGE

BS 6073, BS EN 12390 Annex B, BS 1610



ADS 200/EBL, ADS 250/EBL, ADS 300/EBL Automatic Block/Concrete Test Machine



ADS 300/EL, ADS 250/EL, ADS 200/EL Automatic with 100kN Flexural Frame (FT-100)

# CONCRETE

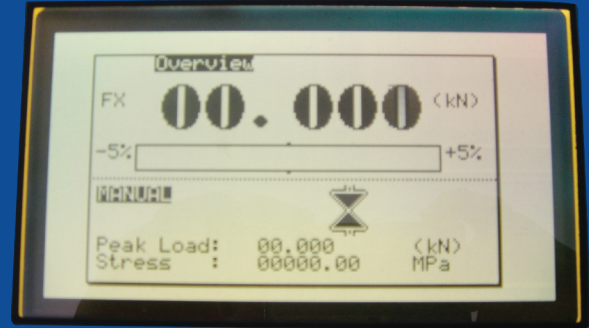
## AUTOMATIC COMPRESSION TEST MACHINE

### Autocon Digital Console

The automatic console is providing control for the main Compression Frame and the optional Flexural frame. LCD display has an Auto cut off system which provide longer life spend for the display. All parameters such as pace rate, sample size, time, date, etc. are entered by using the touch sensitive keypad and function key. The calibration and engineering data are protected by pass code and test result can be viewed and stored up to 300 numbers test which can be connected to optional printer or PC by using RS 232 cable. LCD can be enlarged 4 times larger for better clear view.

Unit Test Autocon is displayed in kN, kgf or lbs and associated in mm or inches unit. The measuring system and hydraulic pump are control by microprocessor and keypad data entry. The auto rapid approach system is provided in the test and load control is based on Servo motor which is more accurate and reliable control of loading rate to the specimen.

The automatic console microprocessor system is provided in the full automatic control system for all the Unit Test Machine on **1000kN, 1200kN, 1500kN, 2000kN, 2500kN, 3000kN, 4000kN and 5000kN** capacity.



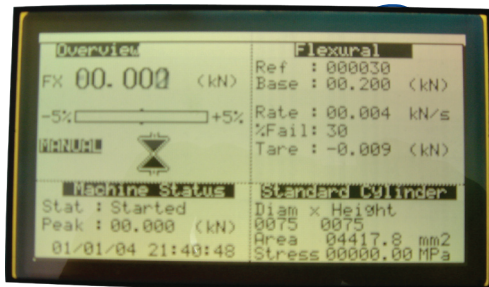
## UNIT TEST SCIENTIFIC

CONSTRUCTION MATERIAL AND  
LABORATORY TESTING EQUIPMENTS FOR  
SOIL, CONCRETE AND ASPHALT

# CONCRETE

## Fully Automatic Autocon Digital Specifications

- 5 stage fine time test
- 3 channel digital readout I.
  1. Compression mode
    - a) Low range 0-400 x 0.1kN
    - b) High range 400-2000, 2500, 3000 x 1kN High range 400-4000, 5000 x 1kN
  2. Flexural mode
    - a) Flexural range 0-100 x 0.01kN or 0-250kN x 0.01kN
- Displays calculated density (kg/m)
- Large graphics LCD Display Screen, size: 100mm x 150mm in kN units
- Calibrated through keypads (password protected)
- Pace rate setting facility from 0.1 to 15.0kN per sec.
- Digital pace rate indicator for manual control
- Real time clock and calendar
- Specimen test number with automatic increment
- Automated close control of the selected pace rate
- -x-y Graphic display Force against Time (s)
- -x-y Graphic display Force against deformation (optional) for elastic modulus test
- Part for hook – up to computer and printer
- In kN made reading, 0.1kN increment up to 400kN then 1kN increment up to **2000kN, 2500kN, 3000kN, or 4000kN, 5000kN**
- Screen display failure load (kN) and stress (Mpa) in engineering units, test number, pace rate (kN/s), Specimen size (mm), date and time
- Automatic closure daylight, zeroing and taring during pretest platen movement.
- Rapid throughout of concrete test
- Complete test can be carried out from the push of a button.
- Manual over-ride for the operator control
- Test result can be viewed, stored up to 300 test before requiring downloading to computer
- Print out result
- Selection of sample type and size
- Metric (kN) or imperial (lbs) and (kgf) selection
- Auto release when sample failure
- Power: 240V, 50Hz, 1pH



## UNIT TEST SCIENTIFIC

CONSTRUCTION MATERIAL AND  
LABORATORY TESTING EQUIPMENTS FOR  
SOIL, CONCRETE AND ASPHALT



## GENERAL SPECIFICATION: (AUTOMATIC)

Model	ADS 150EL	ADS 200EL	ADS 250EL	ADS 300EL	ADS 400EL	ADS 500EL
Capacity (kN):	1500	2000	2500	3000	4000	5000
Low Range Sensitivity (kN):	0-400 x 0.1	0-400 x 0.1	0-400 x 0.1	0-400 x 0.1	0-600 x 0.1	0-600 x 0.1
High Range Sensitivity (kN):	400-1500 x 1	400-2000 x 1	400-2500 x 1	400-3000 x 1	600-4000 x 1	600-5000 x 1
Flexural Range (kN)(Optional Frame):	0-100 x 0.01 or 0-250 x 0.01					
Max Ver. Clearance (mm):	320					
Max Horizontal Clearance (mm):	280	310	315	360	390	430
Ram Travel (mm):	50					
Approx Weight (kg):	700	1100	1200	1950	2500	4300
Overall Dimension with console (mm):	1400 x 600 x 1300 (H)	1400 x 600 x 1300 (H)	1450 x 600 x 1300 (H)	1600 x 600 x 1400 (H)	1700 x 650 x 1600 (H)	1800 x 700 x 1700 (H)
Power:	240V, 50Hz, 1pH					