



**QV HYBRID TYPE1,TYPE4 SERIES 365-CNC
Vision Measuring System with Non-contact
Displacement Sensor**

Series QVH



FEATURES

The Quick Vision Hybrid is an advanced machine that allows vision measurement with both a CCD camera and high-speed scanning by applying a vision measurement unit in parallel with a non-contact displacement sensor.

QV HYBRID

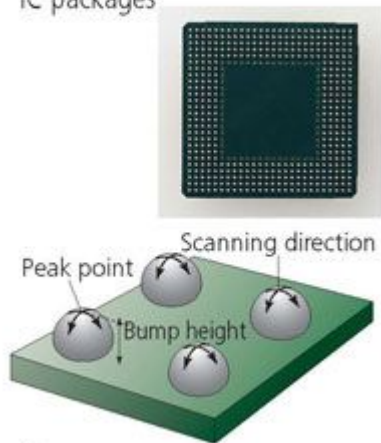
Model No.	QVH Apex 302	QVH Apex 404	QVH Apex 606
Range X-axis	0-12in 0-300mm	0-16in 0-400mm	0-24in 0-600mm
Range Y axis	0-8in 0-200mm	0-16in 0-400mm	0-26in 0-650mm
Range/laser (type1/type2)	X-axis 176 / 162mm7 / 6.5" Y-axis 200 / 195mm 8 / 7.5"	X-axis 276 / 262mm11 / 10.5" Y-axis 400 / 395mm 16 / 15.5"	X-axis 476 / 462mm 19 / 18" Y-axis 650 / 645mm 26 / 25.5"
Range Z-axis	0-8in 0-200mm	0-10in 0-250mm	0-10in 0-250mm
Accuracy/vision	E1XY-(1.5+3L/1000) 0)μm E1Z-(3.0+4L/1000) μm E2XY-(2.5+4L/1000) 0)μm	E1XY-(1.5+3L/1000) μm E1Z-(3.0+4L/1000)μ m E2XY-(2.5+4L/1000) μm	E1XY-(1.5+3L/1000) μm E1Z-(3.0+4L/1000)μ m E2XY-(2.5+4L/1000) μm
Accuracy/laser E2xy	(2.5+4L/1000μm)	(2.5+4L/1000μm)	(2.5+4L/1000μm)

HYPER QV HYBRID

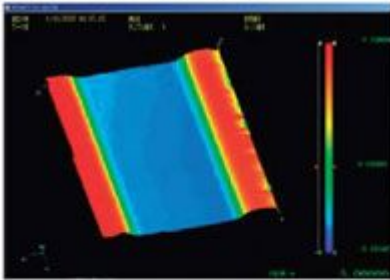
Model No.	Hyper QVH 302	Hyper QVH 404	Hyper QVH 606
Range X-axis	0-12in 0-300mm	0-16in 0-400mm	0-24in 0-600mm
Range Y axis	0-2in 0-200mm	0-16in 0-400mm	0-26in 0-650mm
Range/laser (type1/type2)	X-axis 176 / 162mm7 / 6.5" Y-axis 200 / 195mm8 / 7.5"	X-axis 276 / 262mm11 / 10.5" Y-axis 400 / 395mm16 / 15.5"	X-axis 476 / 462mm 19 / 18" Y-axis 650 / 645mm26 / 25.5"
Range Z-axis	0-8in 0-200mm	0-10in 0-250mm	0-10in 0-250mm
Accuracy/vision	E1XY-(0.8+2L/1000) μ m E1Z-(3.0+2L/1000) μ m E2XY-(1.4+3L/1000) μ m	E1XY-(0.8+2L/1000) μ m E1Z-(3.0+2L/1000) μ m E2XY-(1.4+3L/1000) μ m	E1XY-(0.8+2L/1000) μ m E1Z-(3.0+2L/1000) μ m E2XY-(1.4+3L/1000) μ m
Accuracy/laser E2xy	(2.5+2L/1000) μ m)	(2.5+2L/1000) μ m)	(2.5+2L/1000) μ m)

Applications

- Measurement of BGA/CSP bump height and coplanarity of IC packages



- Flatness measurement



- Surface feature analysis

