

Economical Forced Convection Oven

Standard basic type, Forced air circulation

DKM300/400/600

Operating temp. range

Room temp. +10°C to 260°C

Temp. distribution accuracy

±2.5°C (at 210°C)

Internal capacity

27L DKM300

90L DKM400

150L DKM600

Basic fixed setting forced air convection ovens

Forced convection, constant temperature oven with simple operation functions.

■ Performance and functions

- Fixed temperature, Quick Auto stop, Auto stop, and Auto start operating modes are possible, along with easy control capabilities
- Settings can be made digitally using the dedicated operation menu keys or the up and down keys
- Auto recovery after power failure, calibration offset and key-lock are possible through the auxiliary functions

■ Safety features

- Self-diagnostic functions, Auto overheat prevention, Independent overheat prevention



27L
DKM300

90L
DKM400+ON61 (Option)

■ Specifications

| Product Code | 212876 | 212877 | 212878 |
|-------------------------------|--|------------------------|------------------------|
| Model | DKM300 | DKM400 | DKM600 |
| Circulation method | Forced air circulation | | |
| Operating temperature range*1 | Room temp. +10~260°C | | |
| Temp. control accuracy*1 | ±1°C (at 210°C) JTM K05 | | |
| Temp. distribution accuracy*1 | ±2.5°C (at 210°C) JTM K05 | | |
| Max. temp. reaching time*1 | Approx. 60min (at room temp. +10°C~210°C), Approx. 90min (at room temp. +10°C~260°C) | | |
| Interior material | Stainless steel | | |
| Exterior material | Cold rolled steel plate with melamine resin baking finish | | |
| Heat insulating material | Glass wool | | |
| Heater | Stainless pipe heater | | |
| | 0.8kW | 1.2kW | 1.34kW |
| Fan type / Motor | Scirocco fan / Condenser type motor | | |
| Cable port | 30 mm I.D.×1 pc. (Right side) | | |
| Exhaust port | 30 mm I.D.×2 pcs.(The top) | | |
| Temp. controller | PID control by microprocessor | | |
| Temp. setting method | Operation menu key and digital setting by UP/DOWN key | | |
| Temp display method | Measurement temp. : Digital display by green LED Setting temp. : Digital display by red LED | | |
| Timer | 1 min. to 99hrs. 59min. and 100hrs. to 999hrs. 50min. (with time wait function) | | |
| Operation functions | Fixed temperature operation, Quick auto-stop, Auto start, Auto stop | | |
| Additional functions | Calibration off-set function, Key lock, Uninterruptible power for memory | | |
| Heater circuit control | SSR control | | |
| Sensor | Temp. controller : K-thermocouple, For overheat prevention : hydraulic pressure overheat preventer | | |
| Safety device | Self diagnostic functions (Temp. sensor abnormal, Automatic overheat prevention), key lock function, Independent overheat prevention, Electric leakage breaker | | |
| Internal dimensions (W×D×H) | 300×300×300mm | 450×450×450mm | 600×500×500mm |
| External dimensions*2(W×D×H) | 410×451×670mm | 560×601×820mm | 710×651×870mm |
| Internal capacity | 27L | 90L | 150L |
| Withstand load of shelf board | Approx. 15kg / piece | | |
| Shelf rest step number | 6 steps | 11 steps | 13 steps |
| Shelf rest pitch | 30mm | | |
| Power source 50/60Hz | AC220V 4A Single phase | AC220V 6A Single phase | AC220V 7A Single phase |
| Weight | Approx. 35kg | Approx. 50kg | Approx. 65kg |
| Shelf | Stainless punching metal (Bottom shelf is screwed) 2 pcs. | | |
| Shelf bracket | 4 pcs. | | |

The length of the power cord is about 2m outside the unit.

*1 Conditions : Temperature and humidity 23°C±5°C, 65%RH±20%, (no load), Power supply voltage: AC100V *2 Do not include protrusions

Forced convection circulation

Auto overheat prevention

Independent overheat protector

Self-diagnosis

Key lock

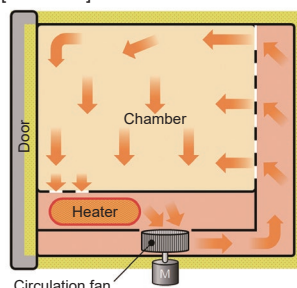
Power outage compensation

Overcurrent ELB



Method

[Side view]



Control Panel



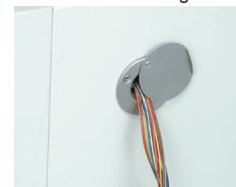
Exhaust Ports (Standard)

Top



Cable Port (Standard)

Right side

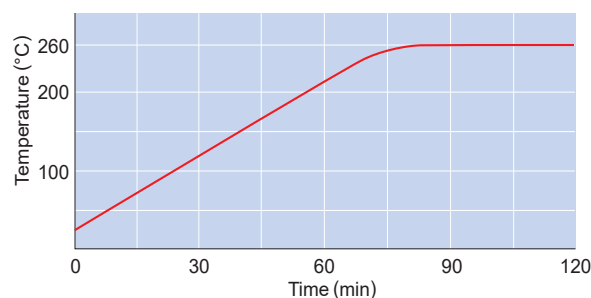


Interior



DKM600

Temperature Rising Curve



Optional items

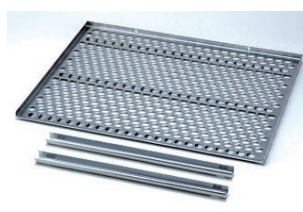
| No. | Product name | Product code |
|-----|--|--------------|
| ① | Stand for DKM300 ON30 | 211180 |
| ② | Stand for DKM400 ON61 | 211856 |
| ③ | Stand for DKM600 ON61 | 211856 |
| ④ | Stacking Support for DKM400 OD40 | 212822 |
| ⑤ | Stacking Support for DKM600 OD60 | 212823 |
| ⑥ | Stainless punching metal shelf for DKM300, 1 pcs. (with shelf bracket 2pcs.) | 212068 |
| ⑦ | Stainless punching metal shelf for DKM400, 1 pcs. (with shelf bracket 2pcs.) | 212246 |
| ⑧ | Stainless punching metal shelf for DKM600, 1 pcs. (with shelf bracket 2pcs.) | 212266 |
| ⑨ | *Cable port Dia 25mm | 281121 |
| ⑩ | *Cable port Dia 50mm | 281122 |
| ⑪ | Seismic mat | 296902 |

* Please specify when ordering main unit.

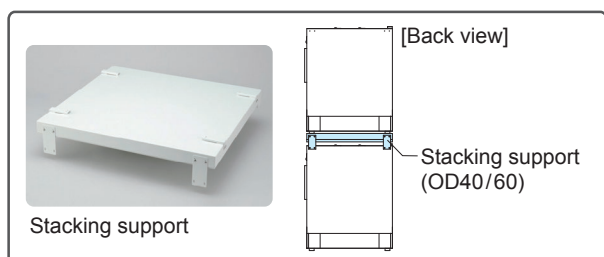
Optional Items



Stand



Shelf (Stainless punching metal) & Stacking support



Stacking support

Dimensions (Unit:mm)

