



## **USR-200 UV SPECTRAL IRRADIANCE METER**

**Professional portable UV irradiance meter**

**240nm-400nm**

**Spectrum, irradiance measurement**

**Suitable for UV irradiance on-site measurement particularly for different UV  
wavelength lights**



### **Description :**

USR-200 UV Spectroradiometer integrates spectrum and irradiance test functions. It adopts a number of international patented technologies and leads mobile spectrum measurement technology. It is widely used in disinfection and sterilization of ultraviolet light sources, light treatment, aging, flaw detection, light curing, breeding, plant cultivation, etc.

### **Ø Main Functions :**

- Measurement Functions: Relative spectral power distribution, peak wavelength, half-peak bandwidth, Spectral irradiance of UVB, UV310 and UVC (UV254nm), total irradiance of any range among 240-400nm.
- 4.3inch touch screen, blue tooth connection (screen and detector)



## PDF View

## Spectrum Report

## Sample Info:

Sample Name: everfine

Sample Number: 1234567890

Test date: 2019-07-16 17:22:39

Sample Model: Sss

Manufacturer: EVERFINE

Test people: EVERFINE

## Device State:

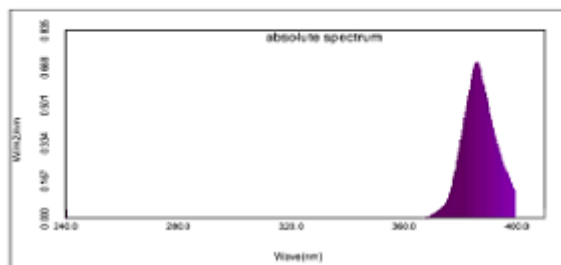
Test Device: USR-300

Average Times: 1

Integrate time: 245.0ms

AD Ip: 4347.64(75.3%)

## Para.



Items	Value	Items	Value	Items	Value
Integrate time	245.0	SP	4347.64(75.3%)	Peak Wavelength	380.0nm
Peak Wavelength	380.0nm	Peak Wavelength	380.0nm	Peak Wavelength	380.0nm
Peak Wavelength	380.0nm	Peak Wavelength	380.0nm	Peak Wavelength	380.0nm
Peak Wavelength	380.0nm	Peak Wavelength	380.0nm	Peak Wavelength	380.0nm

Screenshot Success!

## USR-200 Test Report

## Sample Info

Name: sample1

Model: S-1

Manufacturer: EVERFINE

Tester: ADMIN

Humidity: 65 %RH

Remark: -----

SN: 001

Date: 2019-05-31 18:00

Temperature: 25.3 Deg

State: OK

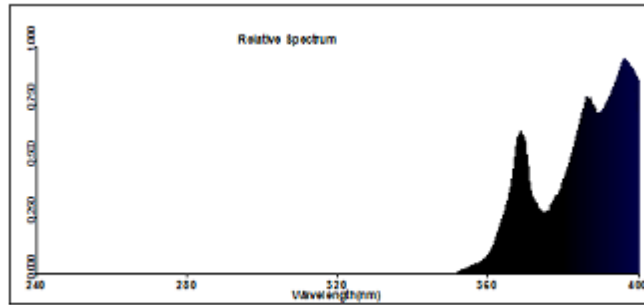
## Meter State

Test Meter: USR-200

Integral T: 2000.0 ms

PeakAD Ip: 5174.0

Average times: 1



## Test Params

Ee=3.4360e+001 uW/cm2

Euvs=3.3060e+001 uW/cm2

Euvs=3.7019e+001 uW/cm2

EuvsEff=1.8075e+001 uW/cm2

Lp=397.0 nm

EVERFINE(uW/cm2)(380-400nm)=2.2049e+001

RadiantExposureH=3.2522e+000 J/m2

Euvs=4.3250e+001 uW/cm2

EuvsEff=2.1499e+003 uW/cm2

EuvsEff=5.3110e+001 uW/cm2

HW=19.4 nm

Android Test Report

PC Test

Report

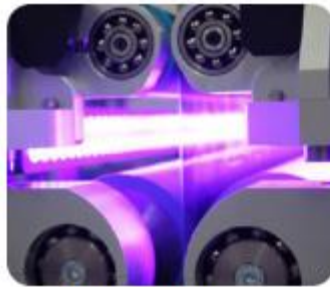
## Parameters :

- Wavelength Range : 240-400nm
- Wavelength Accuracy :  $\pm 0.3\text{nm}$
- Half-peak width:  $1\pm 0.5\text{nm}$
- Measurement Range :  $0.2\mu\text{W}/\text{cm}$ - $2000\text{mW}/\text{cm}^2$   
(Depends on different wavelength range and test object)
- Communication: Bluetooth
- Built-in chargeable Lithium-battery

Suggestion: Test in dark environment.



Medical sterilization



Printing curing



Medical cosmetology



Water purification



Money detector



Biomedical