



CX Imaging luminance Colorimeter

Lower to 0.0005cd/m2

Measure the color uniformity of vehicle display components and atmosphere lights

Equipped with professional analysis software to quickly measure the luminous intensity distribution of vehicle light

Description :

CX series imaging luminance colorimeter can achieve 2D luminance and chromaticity measurement, it is mainly used for the image luminance, chromaticity , luminance uniformity, chromaticity uniformity measurement and has the advantages of good image quality, high precision, fast measurement speed and convenient operation. It's equipped with special analysis software to test luminance color uniformity and headlamp light luminance intensity distribution. It can be used in atmosphere lamp, vehicle small characters, back dashboard, HUD head-up display and OLED taillights.

Main characteristics :

1) Fast test speed, ultra-high repeatability to meet the requirements of rapid and accurate test in laboratory or on production line.

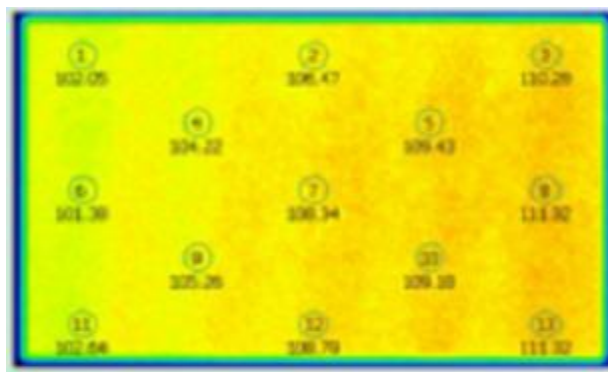
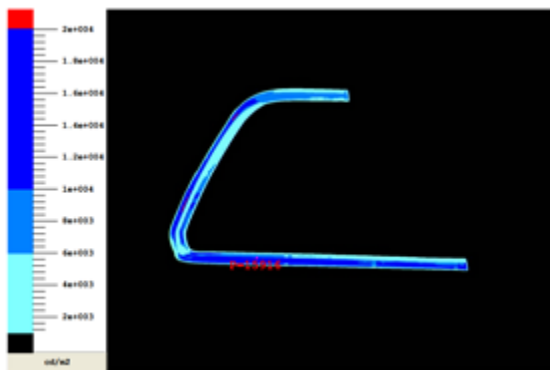
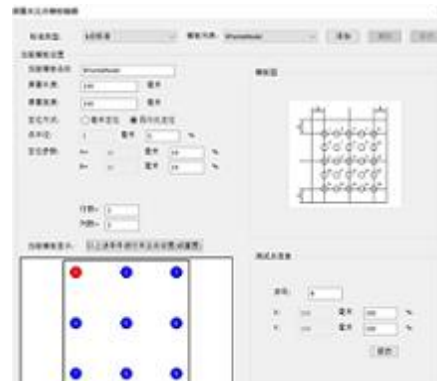
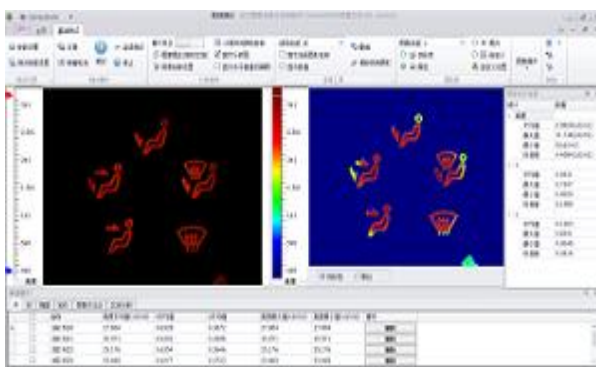
2)The light region can be automatically identified, and can be displayed with simulated color.Easily and intuitively observe the Uniformity of luminance and chroma.

3)The upper and lower limits can be set for the test results, the over-limit qualification can be determined, the color coordinate can be divided into BIN function, etc.

4) Randomly set the evaluation of luminance and chroma uniformity for 9, 13, 25 or 400 points.

5) High dynamic range up to 10^7

Parameters	CX-800C	CX-200C
Measured parameters	Luminance、Luminance distribution、Chromaticity、 Chromaticity uniformity	
Luminance measurement error (standard A light source)	±3%	±4%
Luminance range	0.0005cd/m2~6000cd/m2~600,000cd/m2	
Accuracy of color coordinates (standard A light source)	± 0.003	
chromaticity coordinate repeatability	±0.0001	±0.001
Lens focal length	56 mm (Standard) /8mm(Wide angle)	
Measured distance	150mm~infinity (standard) /350mm~infinity(wide angle)	
Measured size	Normal lens : Measurement size in 0.5m≥80mm*59mm,about 3.6 inches ; Wide angle lens : Measurement size in 0.5m≥364mm*287mm,about 17inches ;	
CCD pixel	≥3000*2700	≥1300×1000
Computer port	USB 3.0	USB 2.0
Working conditions	Temperature: 0~35 °C; humidity: <70% (No dew)	



Automotive atmosphere lamp test

Multi - point automatic measurement

Guide light

Light character



Atmosphere lighting



Reading light



Dashboard



Display

