



PF310A Digital Power Meter

PF310A is a multi-function, wideband, high accuracy digital power meter that can be tested in DC and 0.5Hz-100kHz frequency . In addition to the basic electrical parameter measurement function, it also has automatic range, harmonic analysis, scaling, averaging, filtering, peak holding, and integration, etc functions. With special test software, it can display, store measurement data and waveform. It is very suitable for R&D. universities, testing and calibration center, enterprise research and development, quality inspection and other high requirement situations

Characteristics:

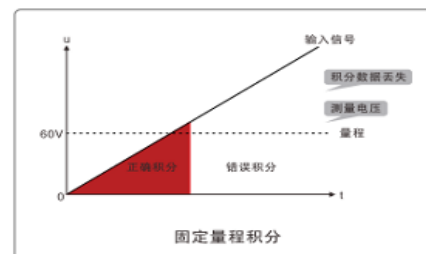
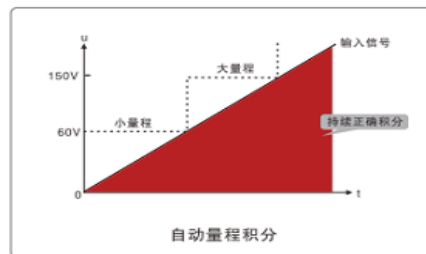
◆ 25 μ A current testing capability

It can measure the lowest power consumption up to 0.005w,conform to international standards (IEC62301, Energy Star and SPEC power).



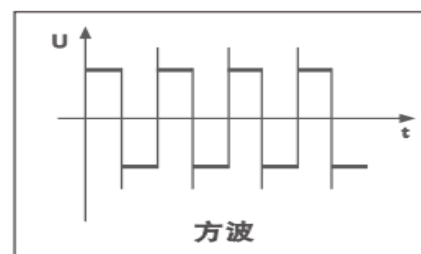
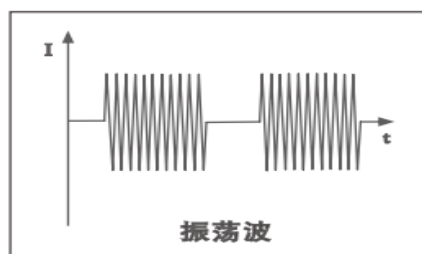
◆ Automatic range function of integral measurement

PF310A can not only measure positive and negative bushes, but also DC current and others. It can be used for battery charging and discharging function, elevator lifting power consumption and storage measurement. PF310A can switch range automatically and quickly in integral mode.

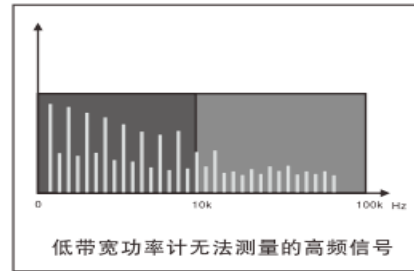
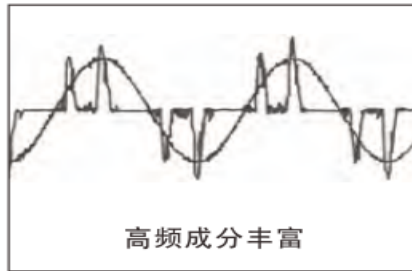


◆ Wide frequency measurement range

PF310A has the frequency test range of DC, 0.5~100kHz. It measures the distortion waveform such as square wave, pulse wave or special waveform RMS value containing DC component.



◆ PF310A can accurately measure power and power factors when measuring sinusoidal wave with high frequency harmonic components.



Technical Specifications

Test Functions:

◆ 4 windows display: V、A、W、var、VA、Vpk、Apk、VHz、AHz、PF、Deg、VCF、ACF、Ah+、Ah-、Wh+、Wh-、V%THD、A%THD、 $V\sum$ 、 $A\sum$ 、 $W\sum$ 、Vi、Ai、Wi、Vi%、Ai%(i:harmonics order)

◆ Multi-function: General measurement, harmonic analysis, and integration can be executed simultaneously.

◆ Harmonic analysis: The technology of Phase-Locked Loop (PLL) synchronization is applied, and comply with the standards of IEC6000-3-2.

◆ Scaling function :Users can use the voltage transformer (PT),current transformer(CT) or voltage output type current sensor to extend the measurement range.

Average function: when the measured signal is unstable and reading is difficult, the average (AVG) function can be used to average the measured value and then display the output, there are two ways: exponential average (EXP) and arithmetic moving average (MOV).

◆ PC testing software: With the software to set up the testing conditions easily, and display the test data and waveforms.

Items	Voltage	Current
InputRange (RMS)	Direct input: CF=3:15V/3 0V/60V/ 150V/30	Direct input: CF=3:5mA/10mA/20mA/50mA/100mA/ 200mA/0.5A/1A/2A/5A/10A/20A CF=6:2.5mA/5mA/10mA/25mA/50mA/100mA/0.25A/0.5

	0V/600V	A/1A/2.5A/5A/10A
	CF=6:7.5V/ 15V/30V/ 75V/150 /V300V	External input: CF=3:2.5V/5V/10V CF=6:1.25V/2.5V/5V
Frequency range	DC,AC0.5Hz ~ 100kHz	
Measurement Accuracy	$\pm(0.1\% \text{Reading} + 0.05\% \text{Range})$	
DataIndicatio n RefreshRate	0.1S、0.25S、0.5S、1S、2S、5S	
Filter	Line Filter: OFF,500Hz or 5kHz are selected	
	Frequency Filter:OFF,500Hz or 5kHz are selected	
Communicati on	USB(standard),RS-232/RS485/GP-IB/LAN/CAN(optional)	

PF300A Digital Power Meter is featured with compact structure, and multiple function AC, DC and standby power consumption can be measured, it can be applied in production, test, evaluation and scientific research.