



Product details

Dial Indicator, Flat Back

10mm, 0,01mm, IP64

Item number: 2046SB-60



Description

Standard Type, 10 mm Range, 0,01 mm Graduation

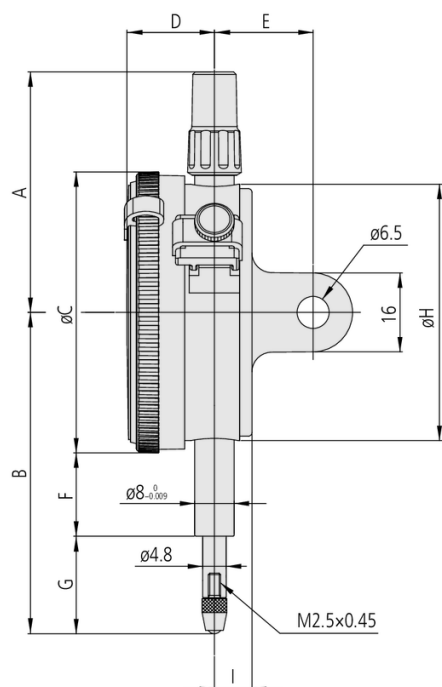
This is a standard, metric dial indicator. It offers you the following benefits:

- Bezel clamp and lifting lever (optional) can be attached to either right or left side. They can be easily installed and removed without tools.
- No through screw holes on the frame and secure adhesion between the bezel and the crystal as well as the use of an O-ring prevents water or oil penetration.

Specification

Range:	10 mm
Range:	13 µm
Range per rev.:	1 mm
Graduation:	0.01 mm
MPE any 1/10 revolution:	5 µm
MPE any 1/2 revolution:	9 µm
MPE any 1 revolution:	10 µm
H MPE (Hysteresis):	3 µm
Mass:	137 g
R MPE (Repeatability):	3 µm
Scale:	0-100 (100-0)
C:	57 mm
D:	17.7 mm
E:	20 mm
G:	29.2 mm
Stem:	8 mm
Contact point:	Carbide tipped, thread: M 2.5 x 0.45 mm
Delivered:	with certificate of inspection, limit indicators
Continuous dial:	Yes
IP64:	Yes
Digital/Analog:	Analog
Inch-Metric:	Metric
Type:	EN ISO Standard
Graduation:	0,01 mm

Dimensions



F: 12.3 mm

I: 7.6 mm

Spare parts

Consumable spares:



Contact Element Ball Point
7,3mm Length, Carbide, Metric
901312



NBR Rubber Boot
for ID-B, IP64 Series 2
125317