

Ultra High-brightness Line Illumination (LLRG-W Series)

LLRG-W Series

World-class high-brightness line illumination

Patented



High power
Light-emitting surface illuminance
: 6,000,000 Lx



Water cooling

Customizable

Light distribution control

Emission color
○ ● ● ● ●

Infrared

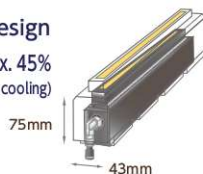
P72

Features

- Fanless compact body with the water-cooling
- Quiet, fanless environment with industry's highest illuminance of 6,000,000 Lx
- Ideal for clean room installation
- High-power illumination suitable for defect inspection in high-speed conveyor systems
- A lot of replacements from metal halide light sources and line light guides

Compact,
water-cooled design

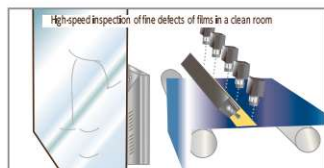
Volume ratio: Approx. 45%
(Compared with LLRG fan cooling)



Installation example

Steel plate inspection, glass inspection, sheet inspection, metal surface inspection, edge inspection, line sensor light source, visual inspection light source, image processing light source

Fanless design ideal for clean room installation



Example of imaging

- Transmission inspection of pinholes in a black film



Pinholes are difficult to detect in dark color film due to low light intensity.



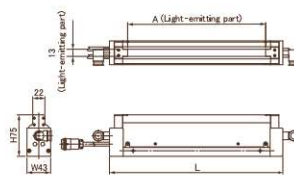
Pinholes can be detected by using high-power illumination.

Product Specifications

Model	LxWxH [mm]	Light-emitting part L [mm]	Power consumption (wiring) [W]	Input voltage [V]	Example of applicable power supply
LLRG166Wx22-75*	166x43x75	100	173	48	※1
LLRG266Wx22-75*	266x43x75	200	346	48	※1
LLRG366Wx22-75*	366x43x75	300	519	48	※1
LLRG466Wx22-75*	466x43x75	400	692	48	※1
LLRG566Wx22-75*	566x43x75	500	865	48	※1
LLRG666Wx22-75*	666x43x75	600	1038	48	※1
LLRG766Wx22-75*	766x43x75	700	1211	48	※1
LLRG866Wx22-75*	866x43x75	800	1384	48	※1
LLRG966Wx22-75*	966x43x75	900	1557	48	※1
LLRG1066Wx22-75*	1066x43x75	1000	1730	48	※1

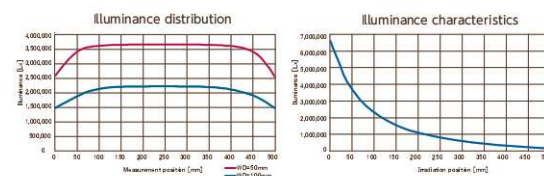
- *in Model : Emission color W (white) R (red) G (green) B (blue)
- Available emitter length size : units of 50 mm
- ※1 For details about other sizes, contact our sales department.

Outer dimensions



* Product specifications are subject to change without notice.

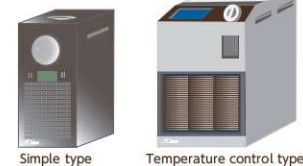
Data (Typical example : LLRG566Wx22-75W)



* Graph information (for reference only) does not guarantee product quality.

Options

- Water cooling unit (thermo-chiller)
Circulates coolant to maintain LED temperature



Example of customization

Attaching a slit unit enables defects detection in bright or dark fields, and edges.



Configuration example

Clean room installation example

Bulk management of LED illumination system by image processing PC

