

High-brightness Lighting BOX «LLBGR-AP Series»

LLBGR-AP Series

lighting box with feedback function



Two types selectable according to purpose

- High-brightness type LLBGR-AP Series
- High-uniformity type LLBGR-AHCP Series

Model	LLBGR-AP	LLBGR-AHCP
Irradiation specification	High-brightness type	High-uniformity type
Outer dimensions (W×D×H)(mm)	170×320×240	
Lighting system	Constant-current control	
Number of outputs	1ch	
Input power	AC100~240V (±10%) 50/60Hz	
Power consumption	330W(typ)	
LED service life	Min. 30,000 hours*1	
Applicable fiber	Glass fiber	
Recommended bundle diameter	φ5~20mm	
Cooling system	Fan cooling Front/side intake and rear exhaust (one rear fan)	
LED emission color	R/G/B full-color	
External interface	Parallel/LAN ports (standard equipment)	
Mass	Approx. 8kg	
Environmental control	Conforming to RoHS2	

*1 Estimated value based on range from initial light intensity to 70% (This value is not guaranteed.)



LAN

Fan cooling

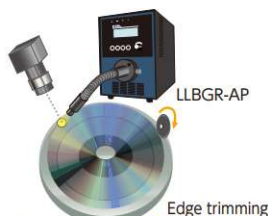
Customizable

Emission color Full-color

Features

- Control light dimming level by adjusting lighting driving current
- Setable with a light source set value at 256 or 1000
- Applicable for parallel communication, LAN communication as external control
- Error detection system detects LED disconnection, LED overheat, internal fan stop abnormality
- Stable Lighting output by lighting feedback function

* Dimming light to be figured out by scale gradation number 256 to be divided by 101 since internal main job is conducted by 101 gradation.



Inspection of silicon wafer edges

Edge trimming

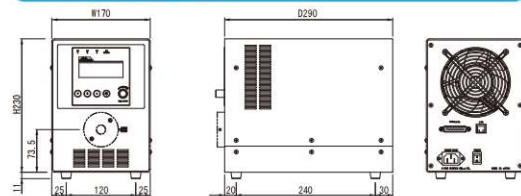
Application example

Light source for various light guides,
light source for transmission light

Light source for line camera,
light source for area camera

Light source for visual inspection,
light source for image processing

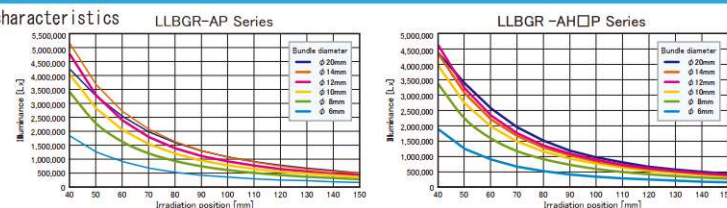
Outer dimensions



* Product specifications are subject to change without notice.

Data (Typical example)

Illuminance characteristics



* Graph information (for reference only) does not guarantee product quality.

High-brightness Lighting BOX «LLBGR Series»

LLBGR Series

Light output exceeding 350 W metal halide light source

High-brightness type
LLBGR-A Series



High-uniformity type
LLBGR-HCPA Series



Two types selectable according to purpose



LAN

Fan cooling

Customizable

Emission color Full-color

Features

- 3-color, full-spectrum light output exceeds 350 W metal halide light source.
- External interface: Parallel/LAN ports (standard equipment)
- High-brightness type suitable for spot irradiation
- Two high-uniformity types suitable for line light guide are available.
- Proprietary cooling mechanism ensures stable light output.
- Mounting adapter selectable according to light guide used.

Desired light-emitting color can be obtained by blending output colors.



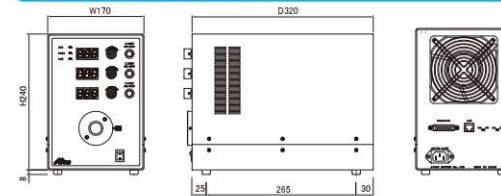
Application example

Light source for various light guides,
light source for transmission light

Light source for line camera,
light source for area camera

Light source for visual inspection,
light source for image processing

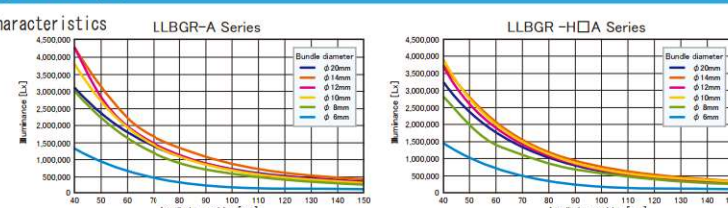
Outer dimensions



* Product specifications are subject to change without notice.

Data (Typical example)

Illuminance characteristics



* Graph information (for reference only) does not guarantee product quality.