



EP-A800 PRO STEREOLITHOGRAPHY 3D PRINTER



EP-A800 Pro Stereolithography 3D Printer

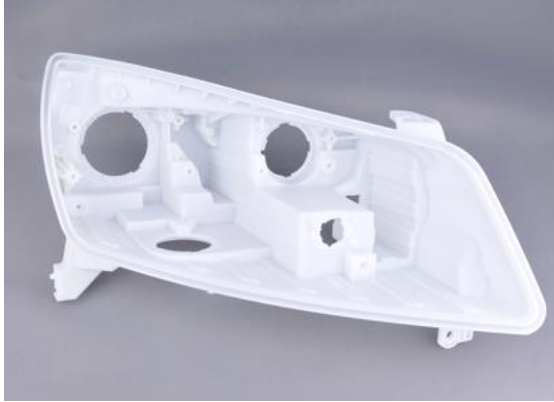
EP-A800 Pro Stereolithography 3D Printer is developed by SHINING3D, which is a professional in 3D printing technology. The system is user friendly, high stability, free maintenance and perfect printing result.

[Get a quote](#) [Mail to us](#)

Contact us:

Email: info@3ds.vn Phone: +84 28 7304 7788

Features:

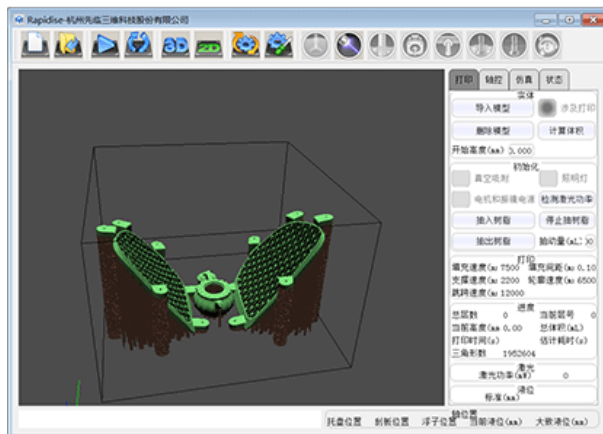
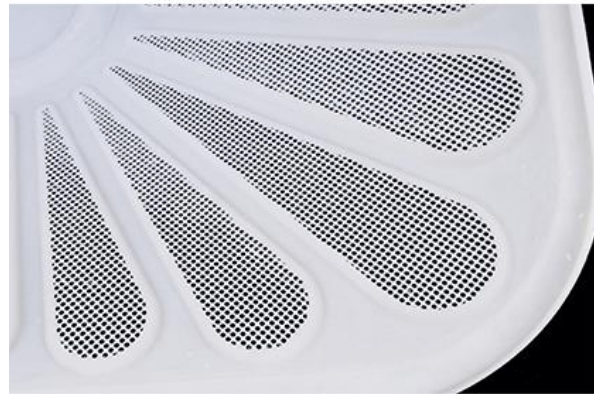


High Accuracy

0.05-0.2mm, improving the accuracy and reducing the reprocessing;
Ultraviolet laser will focus automatically, the facula diameter is less than 0.15mm;
Accuracy calibration automatically makes sure the better quality of prototyping.

High Resolution

Smooth surface ($ra < 0.1\mu m$)
Can create any complicated components (such as hollow parts)
Symmetrical coating



Automatic and intelligent

Highly automatically processing and simple reprocessing.
Can remote control in the same local area network
Voice and SMS remind
Online laser inspection with auto-setting parameter; auto scanning path; liquid level auto control.

Various Material Available for Different Applications

Transparent, opaque, high-strength, thermostable photosensitive resin materials are all available.
Users can choose for preference.



Specification

Model	EP-A800
Material	355 nm photosensitive resin
Build Volume	800 × 800 × 450 mm
Layer Thickness	0.05 mm - 0.25 mm to choose
Build Accuracy	±0.15 mm(within 100 mm) or ±0.15% (more than100 mm)
Printing Speed	120 g/h to choose
Resin Slot	Changeable
Laser Source	355 nm (12 months warranty)
Scanner	Made in Germany
Facula Size	<0.2 mm; around 0.1 mm
Facula Correction	Dynamic focusing
Scanning Speed	10 m/s maximum
Heating Method	PTC heating panel
Power Supply	220 v 50 Hz
Power	3 kW *
Dimension	1650 × 1500 × 2250 mm
Weight	1500 kgs
