

PosiTector[®] **DPM L**

Dew Point Meter Logger

Magnetic probe attaches to steel structures for monitoring climatic conditions

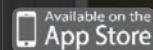
Measures and records climatic conditions including: Relative humidity, air temperature, surface temperature, dew point temperature, difference between surface and dew point temperatures, and wet bulb temperature. Ideal for surface preparation as required by ISO 8502-4.



50 mm (2")



Kensington Security Slot
for anti-theft protection



D A T A S E T

MEASURES

RH – relative humidity
Ta – air temperature
Ts – surface temperature

CALCULATES

Td – dew point temperature
Ts – Td – the difference between
surface and dew point temperatures
Tw – wet bulb

DeFelsko[®]
The Measure of Quality

PosiTector[®] DPM L

Dew Point Meter Logger

Features...

- Attaches to steel structures to measure and record environmental parameters independently for up to 200 days. Stored datasets can be downloaded using a PosiTector Advanced gage body or Apple/Android smart device.
- Records parameters at user selected intervals from 1 min. to 8 hrs.
- Environmentally sealed enclosure – weatherproof, dustproof and shockproof —meets or exceeds IP65
- Fast response precision sensors provide accurate, repeatable readings
- Internal memory storage of 10,000 datasets (60,000 readings)
- Kensington Security Slot for anti-theft protection. Kensington Lock sold separately.
- Uses common lithium coin cell batteries (CR2032)
- Every stored dataset is date and time stamped
- Certificate of Calibration showing traceability to NIST included
- Conforms to national and international standards including ISO and ASTM
- Two year warranty

Specifications	Range	Accuracy	Resolution
Surface Temperature	-10° to 80° C	± 0.5° C	0.1° C
	80° to 100° C	± 1.5° C	
	14° to 175° F	± 1° F	0.1° F
	175° to 212° F	± 3° F	
Air Temperature	-10° to 60° C	± 0.5° C	0.1° C
	14° to 140° F	± 1° F	0.1° F
Humidity	0 to 100%	± 3%	0.1%
Dew Point	-60° to 60° C	± 3° C†	0.1° C
	-76° to 140° F	± 5.4° F†	0.1° F

† Dependent on RH. See www.defelsko.com/TdAccuracy for more information.

Ordering Guide

PosiTector DPM L	DPML
------------------	------

PROBE COMES COMPLETE with air/surface temperature sensors, RH sensor, two CR2032 coin cell batteries, instructions, Long Form Certificate of Calibration traceable to NIST, storage container, and two year warranty.

Size: Ø50 mm x ~38 mm **Weight:** 50 g
(Ø2" w x ~1.5" h) (1.8 oz.) without battery



Optional Kensington Lock keeps the PosiTector DPM L safe and secure

For use with the **PosiTector App** and the **PosiTector Advanced**

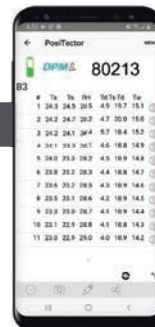


- Display and record climatic parameters from remote (wireless) PosiTector DPM L probes
- Automatically download readings once connected via **Bluetooth 4.0 Technology** (Bluetooth Smart)
- View live measurement data on screen
- Smart Trend™ indicators identify rising, falling, or stable readings
- Easily create reports and manage data with PosiSoft software

PosiTector App

An easy-to-use mobile app (iOS/Android) that wirelessly connects to PosiTector DPM L Smart Probes.

- Automatically generate user-formatted reports and share via email, text, cloud storage services like Dropbox, and more



PosiTector Advanced

- NEW** Storage of 250,000 readings from multiple probes in up to 1,000 batches
- On-screen graphing of measurement data
- Alarms indicate when climate conditions exceed user-selectable parameters
- Includes PosiSoft suite of software for viewing and reporting data
- View and print readings and graphs using universal PC/Mac web browsers and file explorers



Conforms to ISO 8502-4, BS 7079-B4, ASTM D3276, IMO PSPC, SSPC-PA7 and US Navy NSI 009-32.

DeFelsko[®]
Inspection Instruments

DeFelsko Corporation • 800 Proctor Ave., Ogdensburg, New York 13669-2205 USA
Toll Free 1-800-448-3835 • Tel: +1-315-393-4450
www.defelsko.com • E-mail: techsale@defelsko.com

© 2021 DeFelsko Corporation USA. All Rights Reserved. Technical Data subject to change without notice. Printed in USA. PDPMLV-LW-W2101

Made in U.S.A.

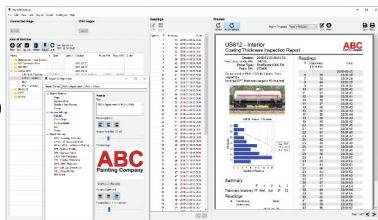
PosiSoft® Suite of Software

Powerful ways to view and report your PosiTector and PosiTest data

PosiSoft Desktop — PC/Mac

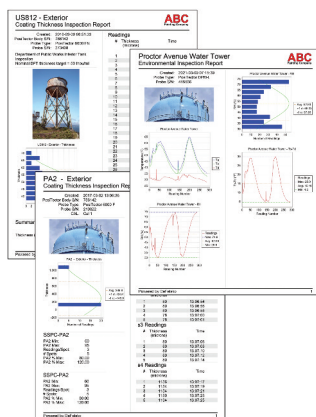
Powerful desktop software for downloading, archiving, and reporting measurement data.

- Import readings directly from the gage via USB, WiFi, or legacy PosiSoft Desktop versions
- **Jobs feature** consolidates batches into groups to keep measurement data organized and to quickly create multi-batch reports
- Fully integrates with PosiSoft.net—backup and synchronize jobs, batches, readings, and report templates to the cloud (see inset at right)
- Export readings as .csv (comma separated value) files for easy import into Excel and other spreadsheets



Professional, Custom Reports

- Compile single or multi-batch reports from multiple probes and instrument types
- Add pictures, screen captures, notes, and more with an onscreen live preview
- Instantly create professional reports from pre-formatted report templates
- Design custom layouts and templates—add custom cover pages and logos, and choose to display charts, histograms, and/or individual readings
- Drag-and-drop Custom Fields mode—import PDF forms and overlay fields to automatically populate inspection data



Prompted Batch Mode

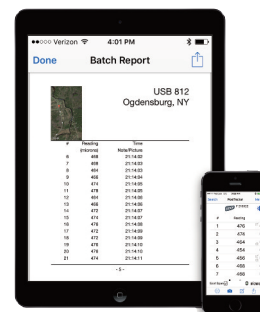
Create pre-defined batches with onscreen text and image prompts for each reading and upload to PosiTector 6000, 200, and UTG gages (*Advanced models only*).

- Ideal for ensuring a consistent measurement pattern for repetitive jobs or when specific measurement locations are required

PosiTector App — iOS/Android

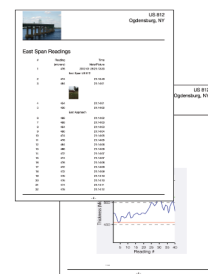
Fully-featured mobile app that connects to the PosiTector SmartLink, PosiTector Advanced gages, and the PosiTest AT-A.

- Auto pairing Bluetooth BLE connection
- Add images and notes to individual readings or batches directly from your device
- Email readings as .csv (comma separated value) files for easy import to Excel and other spreadsheets.
- Synchronize readings with PosiSoft.net—backup and synchronize jobs, batches, and readings to the cloud (see inset below)



Mobile Reporting Solution

- Compile single or multi-batch reports from multiple probes and instrument types
- Add pictures, screen captures, notes, and more
- Email pre-formatted or custom reports from your device instantly



PosiSoft.net

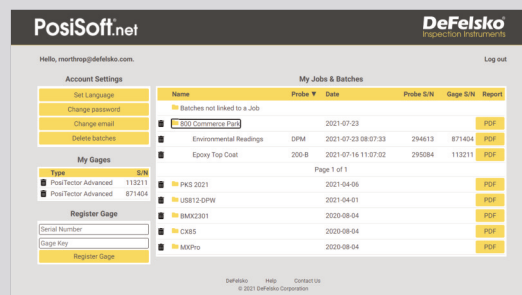
Secure storage of measurement data in the cloud.

compatible with **PosiSoft Desktop** and **PosiTector App**

- Upload measurement data directly from WiFi-connected PosiTector Advanced gages from anywhere in the world—no software required
- Synchronize and share measurement data across multiple computers

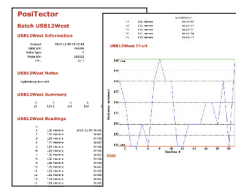
Ideal for...

- Users with multiple computers, instruments, and office locations
- Inspection companies managing data from multiple inspectors
- Login from PosiSoft Desktop to synchronize all measurement data and stored report templates from your account



PosiSoft.net Web Viewer Review measurement data and print simple, pre-formatted PDF reports from any web browser—no software installation required.

PosiSoft USB Drive — Gage based



A simple gage interface to retrieve data in a manner similar to USB flash drives or cameras. No software to install or internet connection required. Measurement data can be printed quickly from a formatted HTML report or exported in .csv format for further analysis in spreadsheets.

PosiTector Developer Resources

•Bluetooth 4.0 •WiFi •Keyboard Mode •USB Serial

PosiTector and PosiTest AT-A instruments can integrate with third-party software, drones, ROVs, PLCs, and robotic devices using several industry-standard communication protocols including: Bluetooth 4.0, WiFi, Keyboard mode, and USB serial.



© DeFelsko Corporation USA 2021. All Rights Reserved. Technical Data subject to change without notice. • Printed in USA • PSoft.v.LW/W2110

DeFelsko
Inspection Instruments

DeFelsko Corporation • 800 Proctor Ave. • Ogdensburg, New York 13669-2205 USA
Toll Free 1-800-448-3835 • Tel: +1-315-393-4450
techsale@defelsko.com • www.defelsko.com

Made in U.S.A.